

SafeRoutes



Academy



Fund Your Project: Tips and Strategies for Writing Successful Grants



NEW JERSEY
Safe Routes



U.S. Department of Transportation
**Federal Highway
Administration**

RUTGERS

Edward J. Bloustein School
of Planning and Public Policy

Welcome!

1. Grant Overview for Bike/Ped Projects
2. Success Stories
3. Tips and Strategies
4. Resources
5. Fund your bike/ped project

Overview of Bike/Ped Grants

- Federal & State Grant Funding
- Regional Programs
- Sustainable Jersey & Sustainable Jersey for Schools Grant Programs



State & Federal Grant Funding for Bike/Ped Projects

State Funded Programs

Municipal Aid

Bikeways

Safe Streets to Transit

Transit Village

County Aid

Local Aid Infrastructure

Local Bridges Future Needs

Local Freight Impact Fund

Federal Funded Programs

Local Lead

Transportation Enhancements

Emergency Relief

Local Safety/High Risk Rural Roads

Safe Routes to School

**Transportation Alternatives
Set-Aside**

Safe Routes to School (SRTS) Grants

Program Goals

1. Where it's safe, get kids including those with disabilities walking/bicycling.
2. Where it's not safe, make it safe.
3. Encourage children to walk & bicycle to school encouraging a healthy, active lifestyle from an early age.



SRTS Grant Goals

- Increase walking & bicycling
- Improve safety
- Reduce traffic & fuel consumption
- Reduce air pollution



Safe Routes to School (SRTS) Grants

Who can apply?

- Municipalities and Counties
- School districts and schools
- One application only

What projects are eligible?

- Projects to encourage and enable children in grades K-8 to walk and bicycle to school
- Must be within 2 miles of a K-8 school
- Infrastructure projects only
- Construction only
- Design assistance is available for eligible communities



SRTS Infrastructure Grant Examples

Projects can include installation of:

- ADA compliant sidewalks and crosswalks (day light)
- Signals
- On and off-road bicycle facilities
- Traffic Calming:
 - Lighted crosswalks, flashing crosswalk signs, permanent radar display, speed tables, raised crosswalks, raised intersections, bulb outs
- Pedestrian bridges to school
- Trails to schools

Not eligible:

- Education programs (TMAs)
- Projects that only serve high schools
- Projects that only serve to make drop-off and pick-up by car easier
- Crossing guard salaries



Transportation Alternatives (TA) Set-Aside

What is TA Set-Aside?

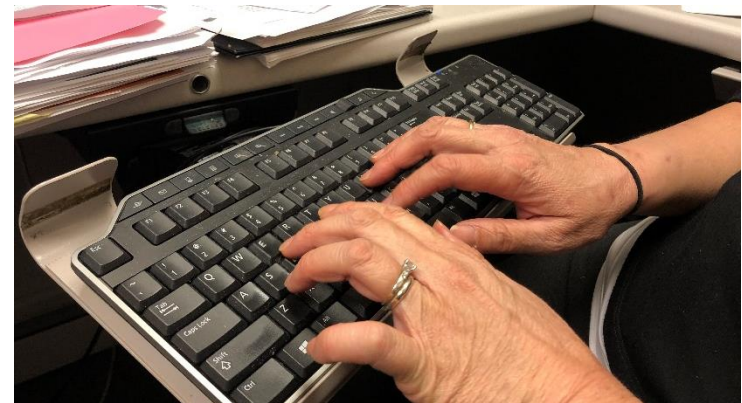
- Community-based, local level projects
- Non-traditional surface transportation projects (land & water)
 - Expand travel choice
 - strengthen local economy
 - Improve quality of life
 - Protect the environment



Transportation Alternatives (TA) Set-Aside

Who can apply?

- Local Governments
- School districts or schools
- Some non-profits
- Regional Transportation Authorities
- Transit Agencies
- Natural resource/public land agencies
- Tribal Governments
- Any other local or regional governmental entity with responsibility for oversight of transportation (other than MPO or State Agency)



Transportation Alternatives (TA) Set-Aside

7 Eligible Categories:

1. Design and construction of on-road and off-road trails for pedestrians, bicyclists and other non-motorized transportation users
2. Conversion and use of abandoned RR corridors for trails for pedestrians, bicyclists and other non-motorized transportation users
3. Construction of scenic turnouts, overlooks and viewing areas
4. Historic preservation and rehabilitation of historic transportation facilities



Transportation Alternatives (TA) Set-Aside

7 Eligible Categories (continued):

5. Community improvement activities (streetscaping, corridor landscaping).
6. Environmental mitigation to address stormwater management, control & water pollution prevention/abatement related to highway construction.
7. Reduce vehicle-caused wildlife mortality or restore/maintain connectivity among terrestrial or aquatic habitats.



Recreation Trails Program Federal Highway Admin

NJ Trails Program:

- Administered by NJDEP
- Develop and maintain recreation trails and facilities for non-motorized use.
- Program updates coming soon
- nj.gov/dep/greenacres/trails/grants.html



NJ DOT Grants for Bike/Ped

State Funding:

- **Municipal Aid** -- Pedestrian safety improvements, bikeways, and streetscapes
- **Transit Village** – Enhance walking, bicycling and transit ridership in area surrounding the transit facility. Municipalities must already be designated.



NJ DOT Grants for Bike/Ped

State Funding (continued):

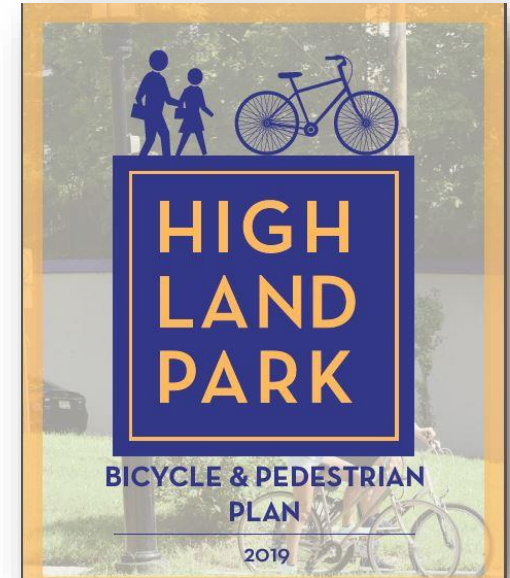
- **Bikeways** -- New bike path mileage, support NJDOT goal of 1,000 miles of dedicated bikeways in NJ.
- **Safe Streets to Transit** – Safe and accessible pedestrian linkages to transit facilities to increase usage of transit by all.



NJ DOT Programs for Bike/Ped

Bike/Pedestrian Planning Assistance

- Since 1996, plans in 100+ towns
- On-call consultants
- Types of projects:
Bicycle and pedestrian circulation studies, pedestrian safety assessments, trail feasibility studies, bikeway plans, crosswalk improvement plans, etc.
- For more information contact:
Bill Riviere: William.Riviere@dot.nj.gov

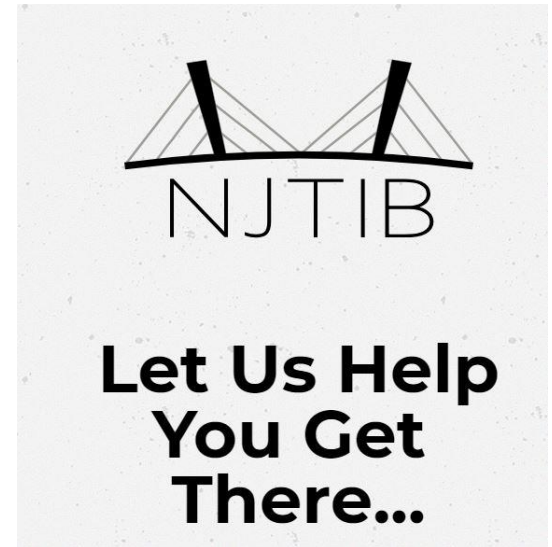


NJ Transportation Infrastructure Bank

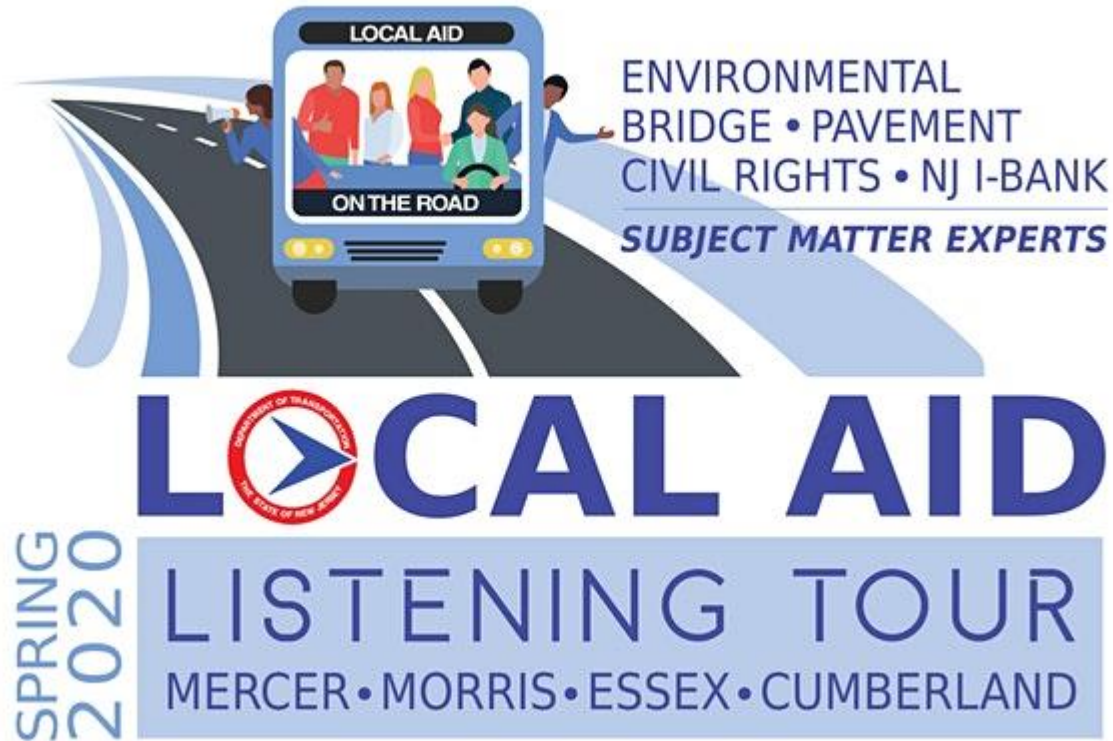
NJ Transportation Infrastructure Bank

- Unique partnership between the NJ Infrastructure Bank (I-Bank) and NJDOT
- Low interest loans for local transportation infrastructure projects.
- Mission of reducing the cost of financing for NJ counties and municipalities.
- Available for capital projects (pedestrian walkways and bridges, etc.)
- Attend seminars throughout NJ - register online

njib.gov/njtib



NJDOT Listening Tours



Register at: njdotlocalaidrc.com

Region-specific Programs

- NJTPA Complete Streets Technical Assistance Program
- DVRPC Transportation and Community Development Initiative (TCDI)
- DVRPC Regional Trails Program



Funding by Phase

Planning

**NJ DOT Bike/Ped
Planning Assistance**

**NJTPA Complete
Streets Technical
Assistance**

**DVRPC Transportation
and Community
Development Initiative**

**DVRPC Regional Trails
Program**

Design

TA Set-Aside*

Safe Routes to School*

**Bikeway Grant
Program****

Transit Village Program**

Safe Streets to Transit**

**DVRPC Regional Trails
Program**

Construction

TA Set-Aside

Safe Routes to School

Congestion Mitigation Air Quality

Rec Trails Program

Bikeway Grant Program

Transit Village Program

Safe Streets to Transit

NJ Infrastructure Bank

DVRPC Regional Trails Program

*Starting in 2016, NJ DOT offers design assistance to TASA and SRTS awardees

**All municipalities and counties may use up to 5% for design

What is Sustainable Jersey?

- Voluntary sustainability certification program for NJ municipalities and schools.
- Move toward sustainable future through completion of actions
- Provide access to grants and funding through sponsors (PSEG, Gardiner, NJEA, NJDOH, etc.)
- Sustainablejersey.com or sustainablejerseyschools.com



SJ Grants Awarded

- \$2,000 green team grants
- \$10,000 to \$35,000 large grants
- Since 2009 over \$5 million in grants to NJ schools and municipalities.



Grant Cycle Timeline

Municipal Program

Announcement	Application Deadline
Late Summer	End of October
Mid-November	End of February

School Program

Announcement	Application Deadline
Late Summer	End of October
Early November	Beginning of February

Eligibility Requirements

- Register with Sustainable Jersey/Sustainable Jersey for Schools.
- Active Green Team
- Funds must be used to implement an action in the program.



Sustainable Jersey Grants

Municipal Actions

- Anti-Idling
- Bicycle and/or Pedestrian Audit
- Bicycle and/or Pedestrian Plan
- Complete & Green Streets for All
- Safe Routes to School

School Actions

- Anti-Idling
- Safe Routes to School District Policy
- Pedestrian and Bicycle Safety and Promotion Initiatives
- School Travel Plan for Walking and Bicycling

Eligible Costs

- Staff salaries & stipends
- Consultant and contractor fees (including training)
- Equipment (bike racks, bike depot, helmets, etc.)
- Promotional items or program supplies (incentives, t-shirts, etc.)
- Educational materials (curriculum development, safety tip sheets)



Tips and Strategies for Grants

- Success Stories
- Tips for Grant Proposals
- NJDOT Grant Strategies & Tips





SRTS Infrastructure Grant Successes

May 2019 – NJTPA Region

Municipality	County	Project Type	Award
Westwood	Bergen	Bike & Ped. Route Thru Parks to School	\$210,000
Newark	Essex	Ped. Safety Around 7 schools	\$1 Million
Orange	Essex	Ped. Safety Around School & Township	\$1 Million
High Bridge	Hunterdon	Ped. Safety Downtown to School	\$360,000
Highland Park	Middlesex	Phase 2 Intersection safety	\$250,000
Asbury Park	Monmouth	Traffic Calming, Bike & Ped. Safety Upgrades	\$500,000
Highlands	Monmouth	SRTS Phase 1	\$275,000
Long Branch	Monmouth	Prospect and John St. Sidewalks	\$230,000
Middletown	Monmouth	Hubbard Ave. Sidewalks, Crosswalks & Ped. Bridge	\$1 Million
Chatham	Morris	Shunpike Rd. Sidewalk Replacement	\$545,000
New Providence	Union	Sidewalk Improvements	\$430,000
		Total	\$5.8 Million



SRTS Infrastructure Grant Success Tips

- Work with your TMA SRTS team
- Go for Gold NJ SRTS Recognition
- Partnership between School District/BOE & Municipality
- Adopt Policies to Support Change: Complete Streets & SRTS
- School Travel Plan earns extra point and helps with application



Show You're Serious about Bike & Pedestrian Safety



SRTS Infrastructure Grant Success Tips

- Show Community Support
 - Conduct Stakeholders survey
 - Create a municipal Bike & Ped Safety Committee
- Conduct NJTPA Street Smart NJ Campaign w/TMA & Police
- Partner with health coalitions (MWC, NJHCN, Culture of Health)
- Include Bike & Ped Element in Master Plan
- Reimbursement Grant - propose realistic & affordable project phases
- Line up stakeholder support letters in advance



Show You're Serious about Bike & Ped. Safety



SRTS Infrastructure Successful Grants

Projects must connect to K-8 schools: Can also connect to parks, downtown or transit

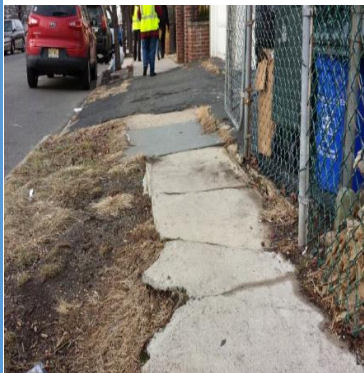
- Westwood – path to connect County park & local park to avoid busy dangerous roads

Show the need (past crashes, # injuries/fatalities)

- Highlands – Commuters speeding to Ferry
- Newark – highest ped. crash rates and fatalities in NJ, did 6 audits/Travel Plan reports
- Middletown – road to school by River. Need safe ped. bridge and protection

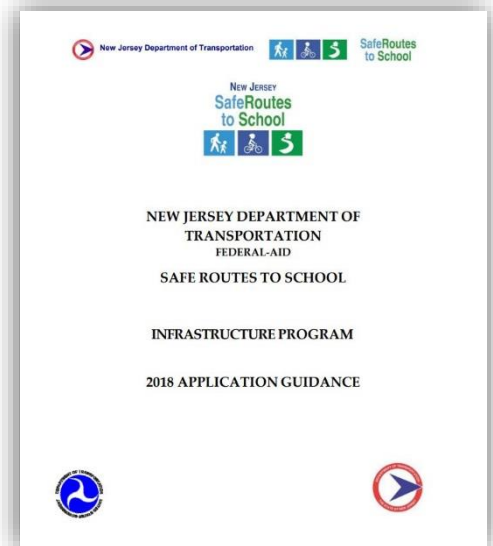
Work with Health Coalitions to improve safety and wellness

- Asbury Park – 30% w/o cars, well lit, walk/bikeways to access food, school, healthcare
- Orange – Safety is issue, need more lighting, crosswalks, sidewalks
- Long Branch – no sidewalks leading to large school, Senior housing in area and no curb ramps, no sidewalks or crosswalks on busy roads



NJDOT Grant Application Strategies

- Pick the correct grant program for your project – scale, cost, etc.
- Review NJDOT grant handbooks online.
- Make sure your proposal meets grant criteria.



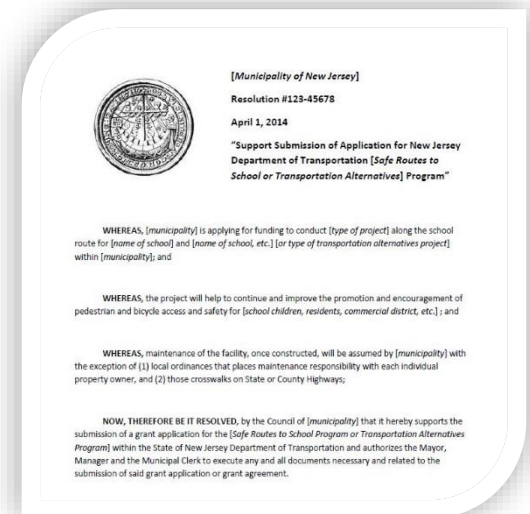
NJDOT Grant Application Strategies

- Be thorough. Ratings are based on the content of your application.
- Don't assume raters know the project. Application must stand on its own.
- Include plenty of photos and maps identifying issues.



NJDOT Grant Application Strategies

- Include all mandated information such as maintenance commitments, resolutions, letters of support, etc.
- Indicate construction readiness. Specify status of permits, right of way and utility relocations.
- Assess your ability to administer a federal-aid project and prepare accordingly.



EXTRA consideration for

- ✓ Towns with Complete Streets policies
- ✓ School Districts with supportive walk/bike to school policies (support Safe Routes to School)
- ✓ NJ Safe Routes to School Recognition Program (gold, silver and bronze level certified).
- ✓ School Travel Plans



NJDOT Grant Tips

Don'ts:

- Don't take close up photos with no context.
- Don't submit a completed project.
- Don't propose a project on a county road without consulting the county.
- Don't propose something that goes against current design standards.
- Don't propose a sidewalk without accompanying safe street crossings.
- Don't propose a project in a neighborhood where residents have protested against it.
- Don't include staff and crossing guard salaries as they are not eligible.
- Don't apply for a federal grant if the total cost of the project is less than \$200K.



This photo of a sidewalk is too close.



Resources - Websites

NJ Safe Routes Resource Center
saferoutesnj.org/funding

Sustainable Jersey
sustainablejersey.com/grants-resources

NJDOT Local Aid Resource Center
njdotlocalaidrc.com

Have a bike/ped project to fund?



Contact Us!

Trish Sanchez

NJ Safe Routes Resource Center

trish.sanchez@rutgers.edu

Lisa Lee

EZ Ride

lee.ezride.org

Shawn Megill Legendre

Delaware Valley Regional

Planning Commission

slegendre.dvrpc.org

Bill Riviere

NJDOT

william.riviere@dot.nj.gov



NEW JERSEY
Safe Routes



U.S. Department of Transportation
**Federal Highway
Administration**

RUTGERS

Edward J. Bloustein School
of Planning and Public Policy