

Johnson Park School



Princeton, NJ School Travel Plan May 2016

Prepared by Greater Mercer TMA



NEW JERSEY
Safe Routes to School



**GREATER
MERCER**
Discover Greener Paths



Contents

School Description	3
Johnson Park School Description:	3
Working Groups and Partnerships:	3
Partnerships	3
School Neighborhood:	4
Johnson Park Catchment Area	5
Travel Routes	7
Arrival and Dismissal	7
Crossing Guards	8
Current Safe Routes to School Programming	8
Safe Routes to School-Disabled Student Inclusion	8
Parking	8
School Policies	8
Walk/ Bike Barriers and Opportunities	9
Identification of Problem Areas	9
Problem Areas and Concerns	10
Travel Tallies	11
Plan4Safety Pedestrian Crash History (2003-2015)	12
Goals and Actions	13
Recommended Infrastructure Improvements	13
Action Plan:	18
Measuring Progress	21
Task Force Timeline	21
Appendix A: Princeton Pedestrian Crashes from the Plan4Safety Database, 2005-2015	21

School Description

Johnson Park School Description:

Johnson Park is located at 285 Rosedale Road, Princeton, New Jersey 08540. For the 2015-2016 school years, there were 355 students in grades Pre-K to 5 (22 Pre-K, 50 Kindergarten, 53 first grade, 52 second grade, 46 third grade, 48 fourth grade, 60 fifth grade, 24 ungraded) . The school day runs from 8:25am to 3:00pm.

Working Groups and Partnerships:

Organization	Role/ Responsibility	Contact
Princeton	Community Partner	Deanna Stockton Municipal Engineer 609.921.7077 x 1138 dstockton@princetonnj.gov
Voorhees Transportation Center	Key Partner	Sean Meehan Project Manager 848.932.2860 smeehan@ejb.rutgers.edu
Greater Mercer Transportation Management Association	Key Partner	Jerry Foster Transportation Safety Educator 609.452.1491 x 227 jfoster@gmtma.org
Greater Mercer Transportation Management Association	Key Partner	Ian Henderson Sustainable Transportation Coordinator 609.452.1491 x 237 ihenderson@gmail.com
Johnson Park SRTS Champion	Community Partner	Robert Ginsberg Principal robert_ginsberg@princetonk12.org
Princeton Police Department	Community Partner	Sgt. Thomas Murray Princeton Police Traffic Safety tmurray@princetonnj.gov
Johnson Park SRTS Champion	Community Partner	Lisa Serieyssol Parent serieyssol@aol.com

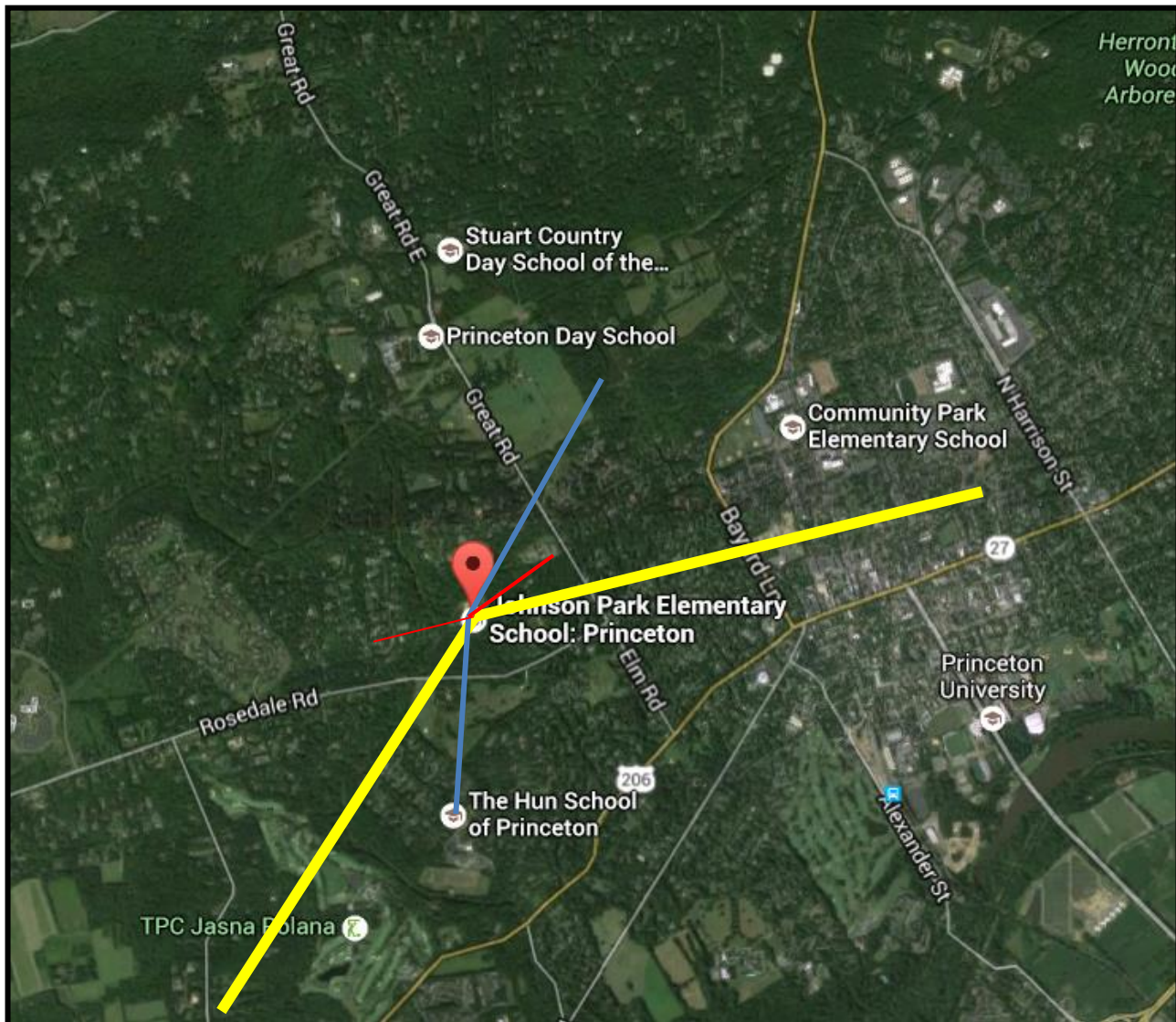
Partnerships

- Princeton Police hosts annual community bike rodeos

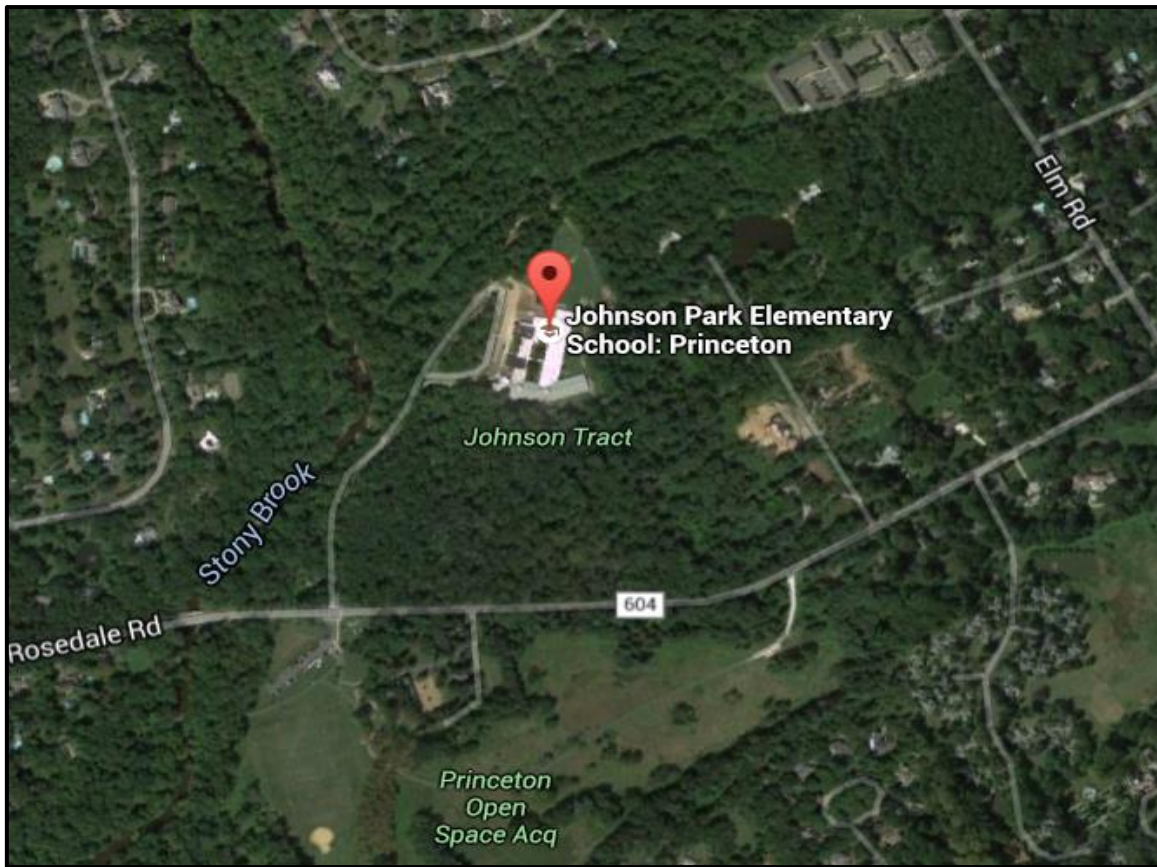
- Princeton Bicycle and Pedestrian Advisory Committee
- Princeton YWCA for Before School Care and After School Care
- West Windsor Bicycle Pedestrian Alliance

School Neighborhood:

The Johnson Park School is located off 45 mph Rosedale Road. A 15 mph driveway, General Johnson Drive, leads to the school entrance. A footpath connects the school to Elm Road. Johnson Park is in a densely wooded section of Princeton and located one mile west of Highway 206.



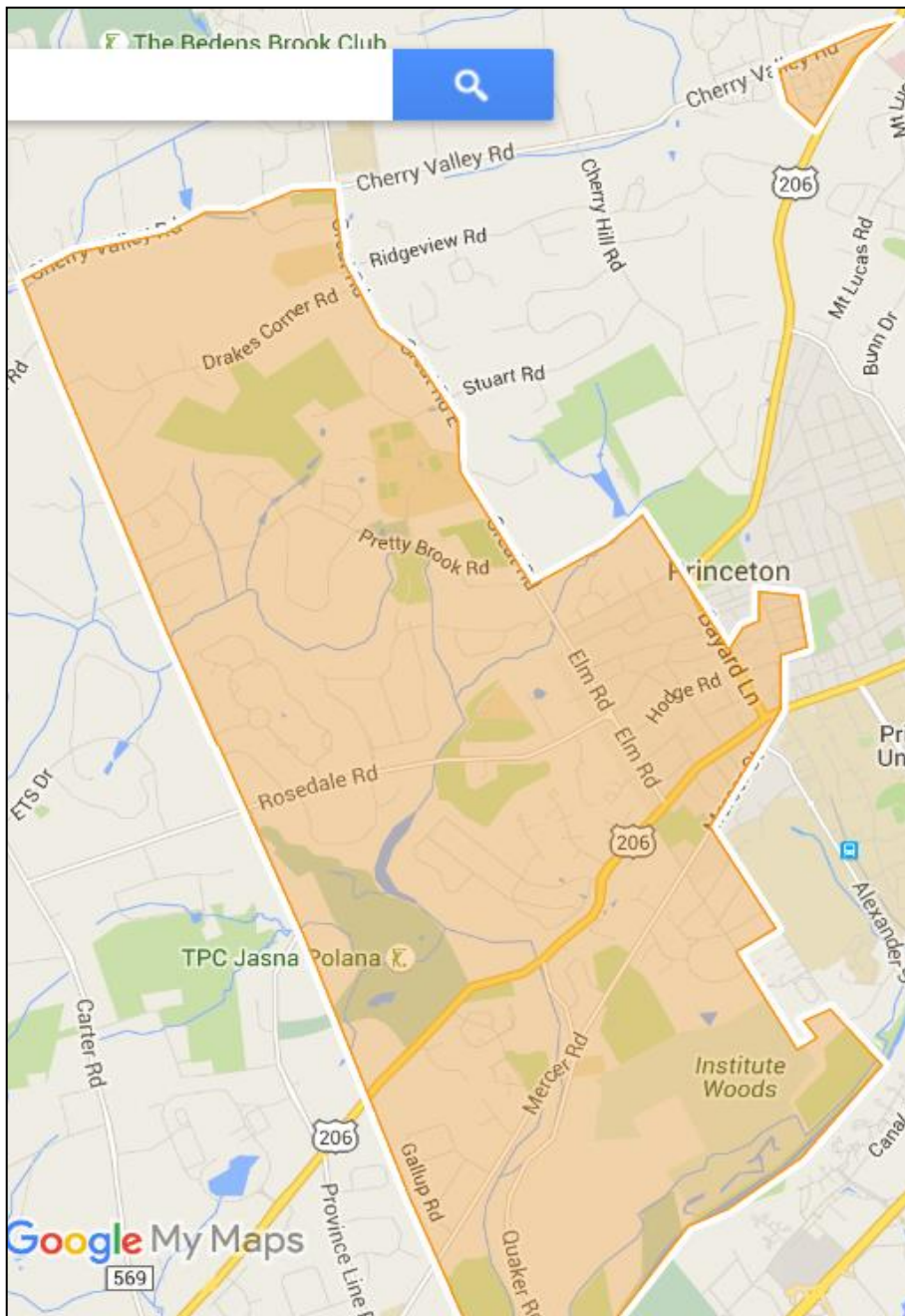
Reference lines. Yellow=2 miles, Blue= 1 mile, Red= ½ mile. A YMCA facility, public library, Princeton University and a few parks are in close proximity.



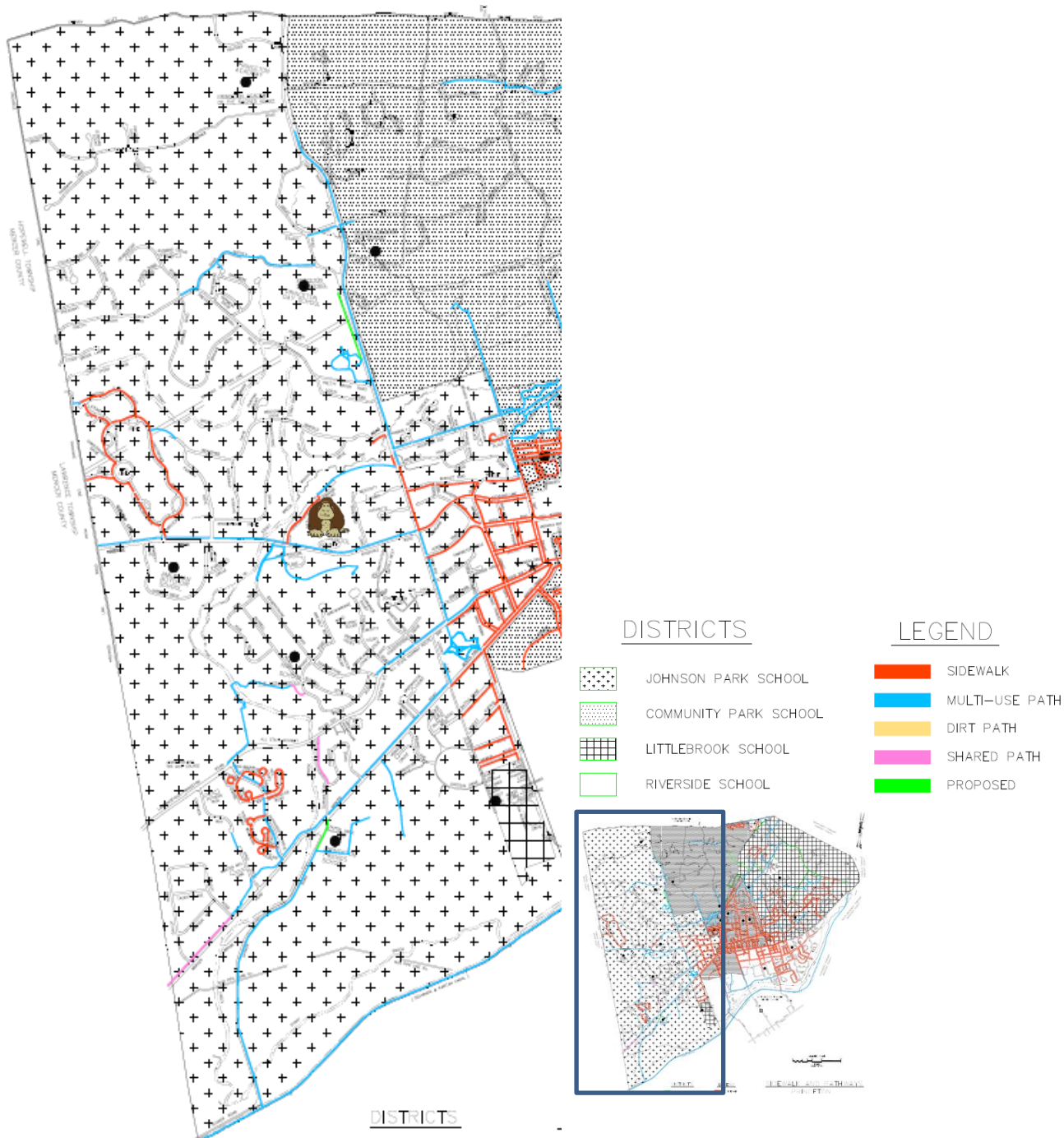
Immediate vicinity of school.

Johnson Park Catchment Area

Catchment area is the orange polygon. JP is represented by the gorilla mascot icon. Note the additional catch near the Rt. 206 and Cherry Valley Road intersection.



Travel Routes



Johnson Park is marked by the gorilla mascot icon within the catchment area (crosses).

Source: Princeton Transportation Engineering

Arrival and Dismissal

- The school day runs from 8:25am to 3:00pm.
- Children may enter school at 8:25 a.m. and go to their classrooms.
- Pre-K, Kindergarten, fourth, and fifth report to the cafeteria; all other children report to the gymnasium.

- From September through October and from mid-March through June, they invite pupils who arrive early to school to join their peers on the playground
- On early-dismissal days, school ends at 1 p.m.
- Pupils may ride only on the bus to which were assigned to them. Students not assigned to any bus may not ride one home to a friend's house.
- Upon coming in sight of the school, riders should dismount and walk their bikes to the bike racks that are provided outside the school building. A chain and lock are suggested.
- Kiss and Go Zone: Pull up to the curb at the break in the fence where an adult is present to cross pupils. Drop your child there, having him or her exit your car only on the sidewalk side; then, look carefully for walkers and bikers before pulling away.
- Visitors are allowed to park in a visitor stall along the access driveway.

Crossing Guards

- Adult crossing guards are typically not on duty to help walkers reach and leave school safely
- Providing for crossing guards is a municipal function; the town is responsible for traffic and pedestrian safety.
- The police department, not the school board, determines crossing-guard locations.
- The Princeton Township Police Department determines the placement of crossing guards for area schools
- According to the 2015-2018 Princeton Strategic Plan, crossing guard hiring and placement will be removed from the Traffic Unit of the Princeton Police Department and moved to the Public Information Officer position

Current Safe Routes to School Programming

- Safe Routes assemblies for the school (pedestrian, bike, bus safety)
- Annual Walk to School Events coordinated by the principal and SRTS champions

Safe Routes to School-Disabled Student Inclusion

- Maintenance of current ADA-compliant pads and addition of pads to sidewalks to enable access during Walk to School events
- Adjust safety presentation styles for those with ADHD and other learning obstacles
- During schoolwide walk audit events, tailor routes for special needs students
- Train the Trainers approach- Pass along safety education to the aides who have to tailor educational needs based on individual student plans
- Look into funding sources for purchasing specially-tailored bicycles for disabled.

Parking

There are a handful of visitor parking spots in the parking lot.

School Policies

Children may enter school at 8:25 a.m. and go to their classrooms. The school prefers they arrive no sooner than 8:00 a.m., and report directly to the cafeteria or gymnasium.

Pupils may ride only on the bus to which they have been assigned. Those who were not assigned to any bus may not ride one home to a friend's house.

The current wellness policy endorses regular physical activity (but doesn't explicitly mention biking/walking to school), and the transportation policy doesn't explicitly encourage biking/walking to school. The district should consider adding explicit encouragement for biking/walking to school to their policies.

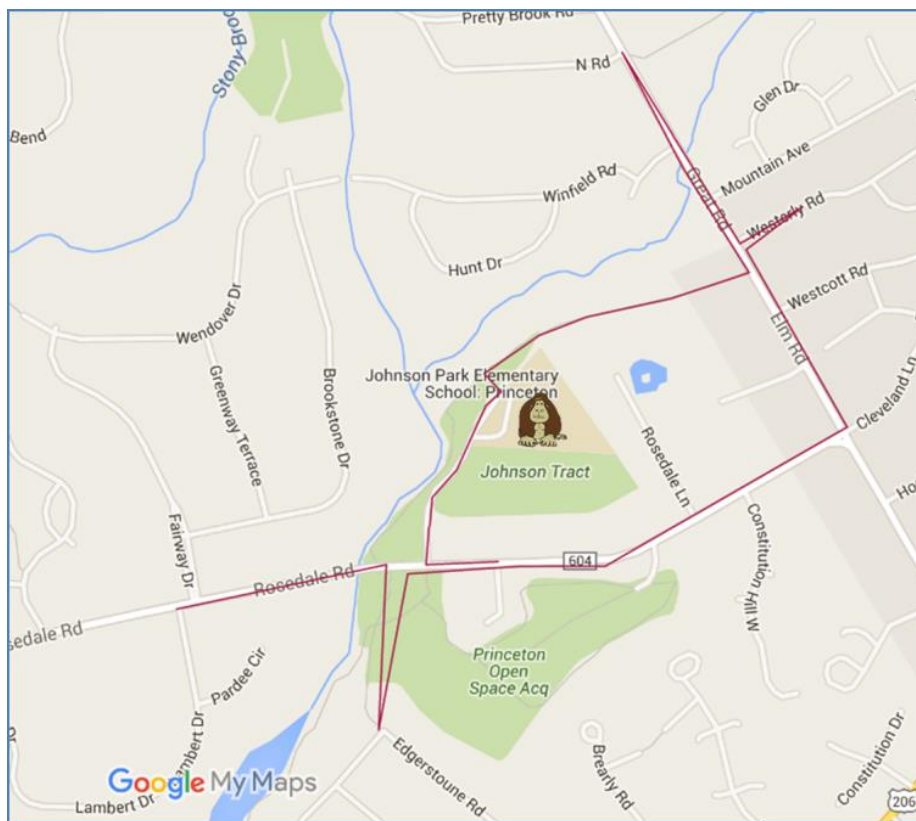
http://www.princetonk12.org/board/board_policies/operations/8550%20District%20Wellness%20Policy.pdf

http://www.princetonk12.org/board/board_policies/operations/8600%20Transportation.pdf

Walk/ Bike Barriers and Opportunities

Identification of Problem Areas

There have been informal walk and bike audits around the school and its neighboring trails to identify both infrastructure improvements to assist current walkers and places to create new spaces for future walking and biking to school.

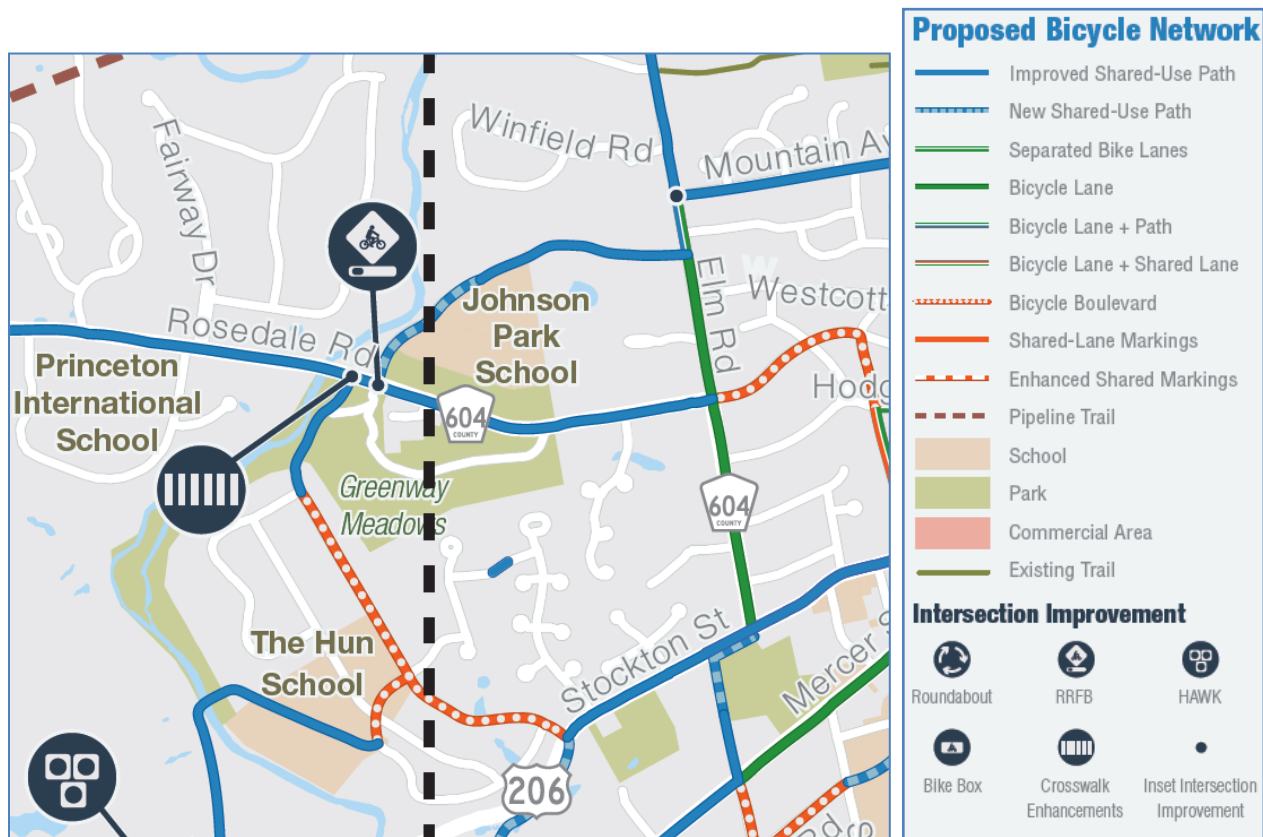


April 21, 2016 Walk Audit

Parental input and conversation has also provided valuable input in determining priority areas.

The goals of Princeton's 2015 Bicycle Master Plan align with Greater Mercer TMA's Johnson Park suggestions, particularly in creating places for new walkers/bikers. The proposed municipal bicycle network is intended to "create a bicycle network that is continuous, connected, convenient, complete, and comfortable for cyclists of all ages and abilities."¹ Of particular interest

to Johnson Park, the Rosedale Road/Hamilton Avenue Corridor proposes the following improvements:



Source: Princeton Engineering

Key changes include the improvement of shared use paths and a Rectangular Rapid Flashing Beacon at the Rosedale/General Johnson Drive intersection.

"Bicycle Master Plan Study - Princeton, New Jersey." *Bicycle Master Plan Study - Princeton, New Jersey*. Princeton, 2015. Web. 18 May 2016.

Problem Areas and Concerns

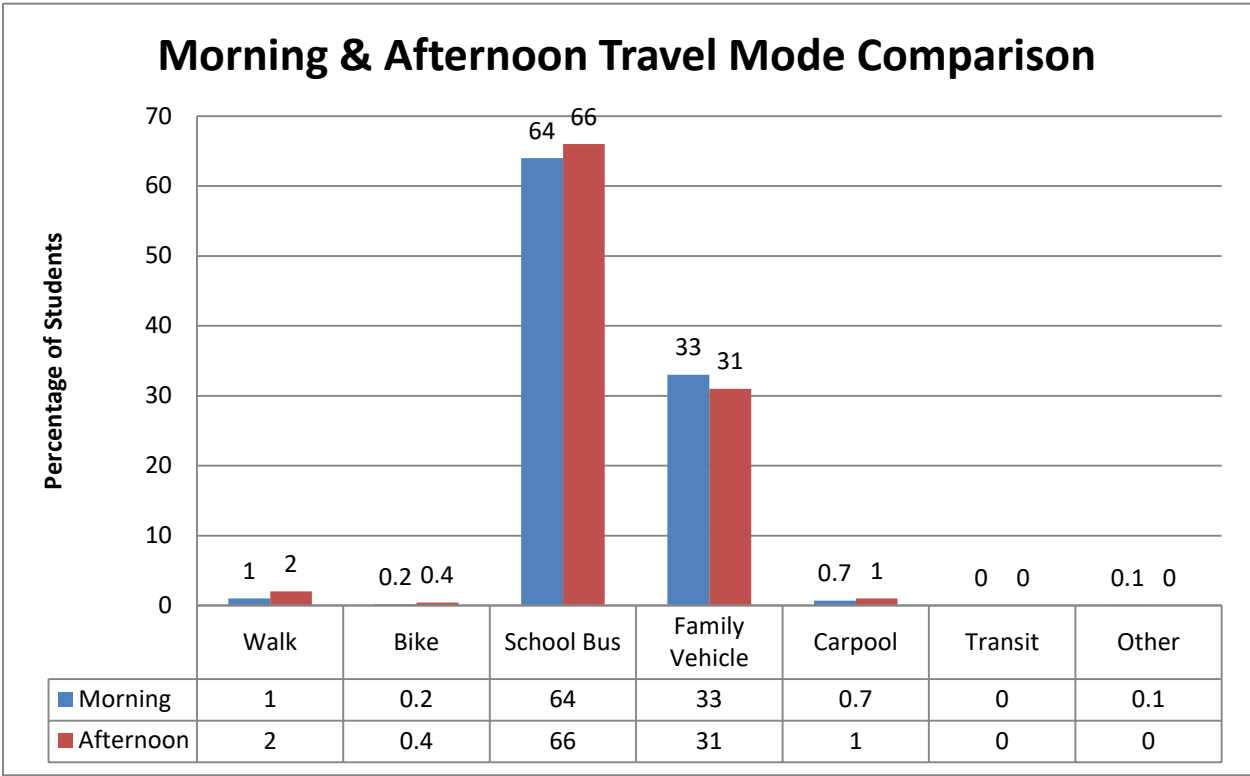
Johnson Park's Rosedale Rd connection is marked at 45 mph. There is a 25 mph speed zone that abruptly attempts to slow traffic until it returns to 45 mph. An overhanging speed reader sign will count driver speed during school but remains blank outside of school hours. The Rosedale Road/General Johnson Road intersection is an area of concern due to these high speed vehicles. The school catchment area contains a network of mixed use pathways. However, the mixed use pathway's bumps from tree roots, smaller 5 ft. width, and overgrown landscaping making it unfavorable for bike ridership. Buses transport over two-thirds of the students and almost all of the remaining third are driven in a car.

The Great Rd/Elm Rd meeting point at the senior center adjacent to the school is downhill both ways. This is a high speed road for students to cross to reach trails leading behind the school. There are currently no signals or high-visibility signs.

The school’s catchment area does not include complete walking/biking connections to Johnson Park. Many of the students with walking and biking connections, have higher speed roads to cross which need safety improvements. Students that live closer to the eastern end of catchment are subject to rush hour commuter traffic. For example, Rt. 27/Stockton Street and Bayard Lane have been the site of many pedestrian crashes in the last 12 years (see Plan4Safety image below).

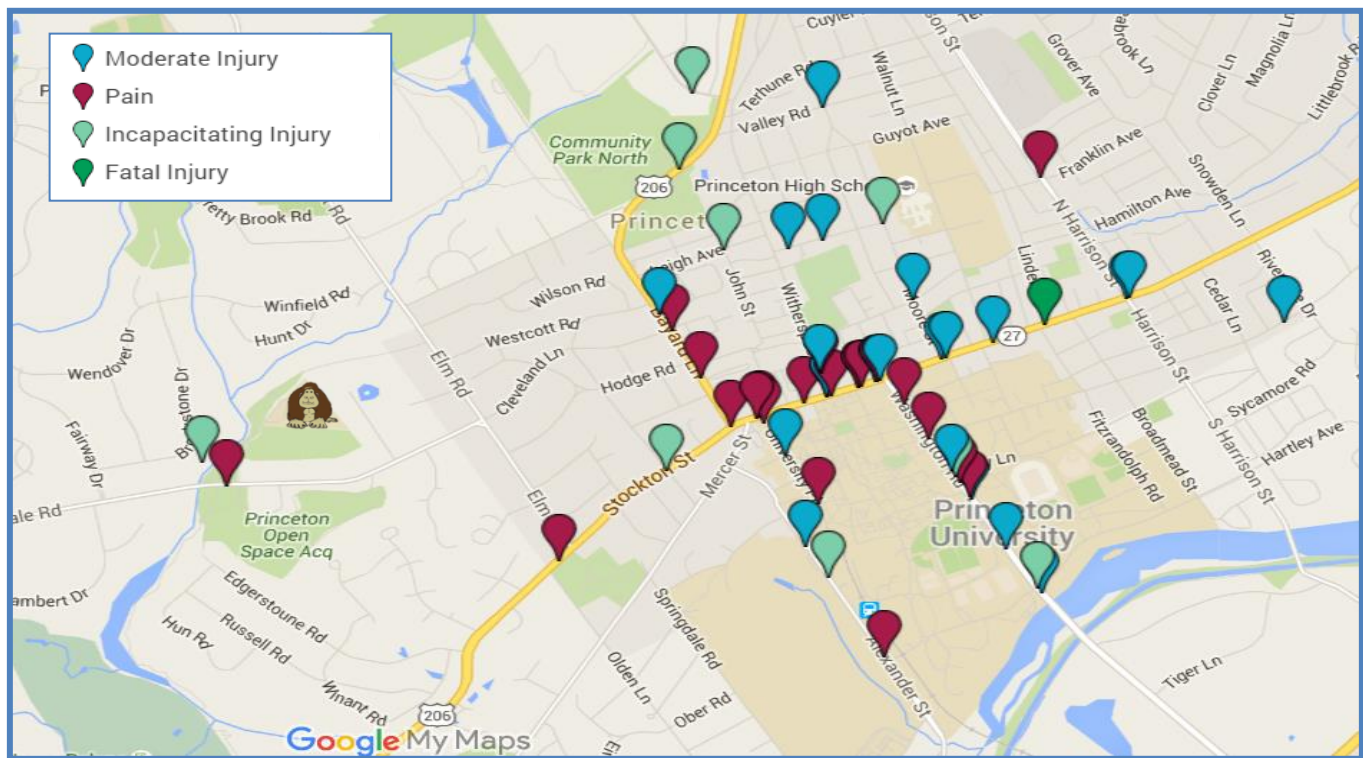
Travel Tallies

In December 2015, travel mode tallies were taken in classrooms at Johnson Park Elementary. For three days (Tuesday, Wednesday and Thursday) of one week the students were asked “How did you arrive at school today?” and “How do you plan to leave for home after school?” The students then raised their hands and were counted for each travel mode: walk, bike, school bus, carpool, take a family vehicle or other. Over the three days percent of student travel modes were recorded and the results can be found in the charts below.

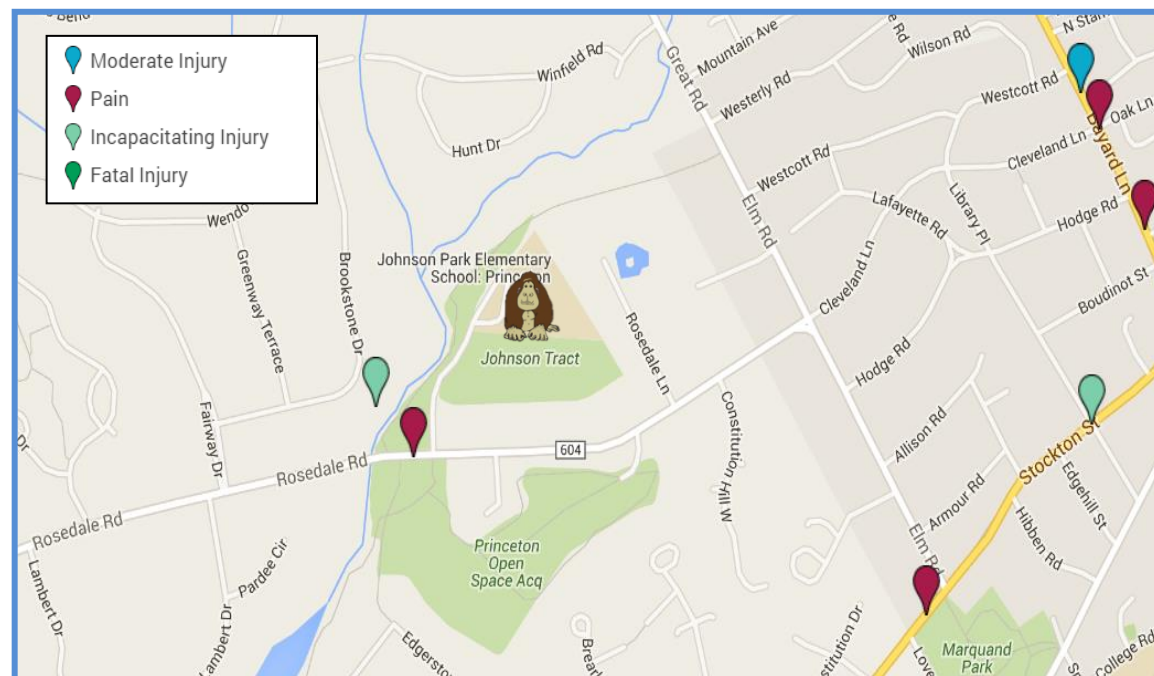


Right now, almost exactly two-thirds of the school takes the school bus and the remaining third are driven in a family vehicle. This could indicate a deficiency in walkable/bikeable infrastructure. The one third being driven would be a key target for future walking/biking to school.

Plan4Safety Pedestrian Crash History (2003-2015)



Bicycle and pedestrian crashes are concentrated on Rt. 27 (Nassau Street). Johnson Park Elementary is represented by the monkey mascot icon. See details in Appendix A.



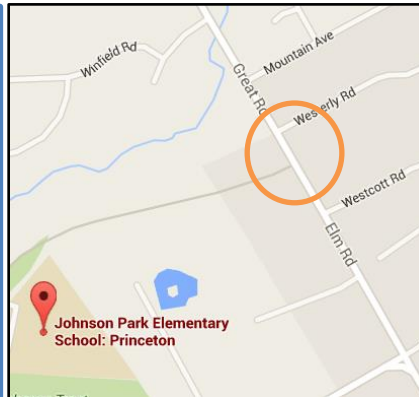
These are bicycle and pedestrian crashes found within 1 mile proximity to Johnson Park Elementary. The school is represented by the monkey mascot icon. See Appendix A for details.

Goals and Actions

- Greater Mercer TMA would like to see more students walk or bike to school. As seen in the Travel Tallies, two thirds ride the bus and one third are driven by car. This could be achieved through street improvements that increase safety.
- Immediate concerns include improving the safety of the crossings at the high speed roads of Rosedale in the front of the school and Great Rd/Elm Road in the back/east of the school.
- The majority of students living in the area bound by Elm Road, Stockton Street, Bayard Lane and Mountain Avenue live within a one-mile walk to the school, some within one- half mile. The internal roads are highly walkable, however crossing Elm Road to access the trail leading to the school needs to be improved to increase safety and encourage parents to allow their children to walk. A Hawk signal should be installed at the crossing location. A rectangular rapid flashing beacon (RRFB) would also be an option. A high visibility crosswalk is also needed. A permanent speed sentry can also be located in this area to keep drivers vigilant about not speeding.
- A Hawk signal should also be installed on Rosedale at the entrance to the Johnson Park School. The signal would improve the safety of the crossing and encourage students living in the Hun School neighborhood to walk to school. Most houses in the neighborhood are located less than one mile from the school. A high visibility crosswalk with advance signage would also improve safety. A RRFB would also be an option.
- To encourage more walkers and to improve biking conditions, the multi-use path along Rosedale Road should be improved.
- Crossing guards should be considered at the improved intersections.
- Continue to host Walk and Bike to School events and increase Walking School Bus app use
- Assist Princeton in their Bicycle Master Plan implementation to increase the number of students that can safely bike to school.

Recommended Infrastructure Improvements

*Please note that good examples of current infrastructure are included for reference purposes.





*Senior development entrance
300 Elm Rd. Needs ADA-pad,
high visibility sign, (downhill
both ways)*

Westerly Rd and Great Rd

*NEEDS IMPROVEMENT-
HAWK, RRFB or High Visibility
signage*

*GOOD- - ADA pads, new
sidewalk, large Continental
crossing markers*



GOOD- Newer sidewalk paths along Great Rd



Mountain and Great Road- Needs ADA-pads, Pedestrian warning sign



GOOD- New sidewalks and slow mph along General Johnson Rd (school driveway).



GOOD- Street labels printed along General Johnson Rd (school driveway).



School Entrance off General Johnson Drive. Potential curb cut and Continental crosswalk



Rosedale Road

GOOD-New sidewalks along Rosedale Rd northbound

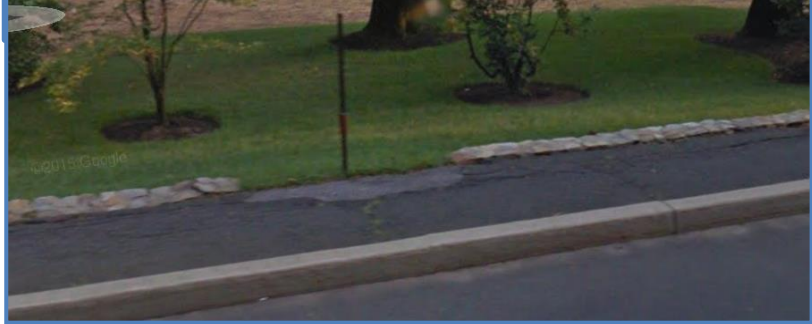


NEEDS IMPROVEMENT-

Leave speed monitoring sign on after school drop-off and pick-up hours.



Rosedale Rd - Sidewalk stoppage



Example of a Rosedale Road 5 ft. Multi-Use Path- fix cracks, widen path

Action Plan:

This plan of action is intended to increase safety for students on their walk to and from school and when appropriate, encourage more students to walk. The table below identifies those actions, a responsible party for implementing them, a time frame, and a level of cost. Many actions identified as “short-term” and “low cost” can make a big difference in a short time and can be accomplished with the help of local partners.

Cost estimates are for planning purposes only – a professional engineer should prepare the actual estimates used for grant application. These estimates were prepared using the SRTS Implementation Cost sheet prepared in 2014 to support the grant application process.¹

Engineering			
Action	Responsibility	Time Frame	Cost
Westerly Road and Great Road HAWK or Rectangular Rapid Flashing Beacon or high visibility signage	Princeton	Medium Term	Est. HAWK \$90-150K RRFB \$30-40K
300 Elm Road ADA Pads	Princeton	Medium Term	

¹ http://www.saferoutesnj.org/wp-content/uploads/2013/07/srts_costs_NEW-FORMAT_FINAL.pdf

Mountain and Great Rd ADA Pads	Princeton	Medium Term	
Curb cut on General Johnson Rd (school driveway)	Princeton	Medium Term	Est. \$7.5K
Speed Monitoring Sign on Rosedale Rd southbound	Princeton	Medium Term	Est. \$5K
Rosedale Rd Southbound Sidewalk to fill the stoppage	Princeton	Medium Term	Est. \$6K
Rosedale Road Multi-use path asphalt upgrades	Princeton	Medium Term	Est. (\$250/ft) 1 mile = \$2M

Education			
Action	Responsibility	Time Frame	Cost
Educate students, family members, bus drivers and school employees about drop-off/ pick up zones. Make sure everyone knows the best way to keep students safe and to quickly dismiss students from school.	School, School District	Short Term / Ongoing	Low
Increase community outreach about the health benefits of walking and biking to school.	School, PTO	Short Term	Low
Conduct community wide outreach about Safe Routes to School actions such as walking and biking safety.	School, GMTMA	Short Term/ Ongoing	Low

Establish a program to encourage students to walk and/or bike to school. Examples: Golden Sneaker Award, Walking Wednesday, Walking School Bus, Bike Train	School, GMTMA	Short Term/ Ongoing	Low
Educate community and responsible parties about snow removal on sidewalks near schools.	Public Works	Short Term/ Ongoing	Low

Encouragement			
Action	Responsibility	Time Frame	Cost
Establish main walking routes, safety corridors, walking school buses – safety in numbers.	School, PTO, GMTMA, Community Groups	Ongoing	Low
Conduct Student and Parent survey to see what actions and rewards could encourage them to walk to school more – and feel safer walking to school.	School, PTO, GMTMA	Short Term	Low

Enforcement			
Action	Responsibility	Time Frame	Cost
Enforce speed limits (in general and specifically in school zones), pedestrians walking safely, drivers watching for pedestrians especially at times when students are going to/ from school.	Police	Ongoing	Low / Medium
Enforce motorist compliance with crossing guard instructions	Police	Ongoing	Low / Medium
Enforce parking laws.	Police	Ongoing	Low / Medium
Conduct structured crosswalk enforcement campaign.	Police	Ongoing	Low / Medium

Increase law enforcement presence seen in the vicinity of Johnson Park Elementary Schools.	Police	Ongoing	Low / Medium
--------------------------------------------------------------------------------------------	--------	---------	--------------

Evaluation			
Action	Responsibility	Time Frame	Cost
Conduct periodic travel mode choice surveys (teacher tallies)	School	Annual	Low
Conduct bikeability audit of walking area	School, Township, GMTMA	Short Term	Low
Tour the areas with school, township and TMA personnel to identify areas for improvement	School, Township, GMTMA	Short Term	Low

*Explanation of funding- Greater Mercer TMA is funded through the New Jersey Department of Transportation to offer advice and assistance in starting safe Routes to School programs and projects. Greater Mercer TMA can help with walk and bike to school events, walking school bus programs, youth bicycle and pedestrian education, school travel plans, and surveys that provide evaluation and feedback on local programs.

Measuring Progress

Task Force Timeline

Greater Mercer TMA will be in discussion with participating organizations about implementation progress. In particular, GMTMA will monitor the progress of the Princeton Bicycle Master Plan and continue to provide input.

Appendix A: Princeton Pedestrian Crashes from the Plan4Safety Database, 2005-2015

ID	Year	Crash Location	Cross Street	EPDO (Severity)
5265348	2003	NJ 27	VANDEVENTER AVENUE	Moderate Injury
5265583	2003	NJ 27	WITHERSPOON STREET	Moderate Injury
5265624	2003	HAMILTON AVENUE	CHESTNUT STREET	Moderate Injury
5265644	2003	UNIVERSITY PLACE	ALEXANDER STREET	Moderate Injury
5265689	2003	NJ 27	PALMER SQUARE WEST	Moderate Injury
5265707	2003	MERCER COUNTY 604		Moderate Injury
5265866	2003	NORTH ENTRANCE SHOPPING	NORTH HARRISON	Moderate Injury

			STREET	
5265893	2003	NJ 27		Moderate Injury
5265506	2003	WASHINGTON ROAD	NASSAU STREET	Pain
5265543	2003	ROUTE 571		Pain
5265655	2003	PALMER SQUARE WEST	HULFISH STREET	Pain
5265675	2003	VANDEVENTER AVE	WIGGINS ST.	Pain
5265927	2003	WITHERSPOON ST	VALLEY ROAD	Pain
5265964	2003	NJ 27		Pain
5266149	2003	301 NO HARRISON ST-PRINCETON SHO	VALLEY RD.	Pain
5265371	2003	NJ 27	LINDEN LANE	Fatal Injury
4624962	2004	WIGGINS ST	NORTH TULANE STREE	Moderate Injury
4625015	2004	NJ 27		Moderate Injury
4625039	2004	PRINCETON UNIVERSITY CAMPUS		Moderate Injury
4625053	2004	WITHERSPOON STREET	FRANKLIN AVENUE	Moderate Injury
4625088	2004	ALEXANDER ST	COLLEGE RD.	Moderate Injury
4625103	2004	HAMILTON AVE	MOORE ST.	Moderate Injury
4625171	2004	ROUTE 583		Moderate Injury
4625364	2004	ALEXANDER STREET	WEST DRIVE	Moderate Injury
4625391	2004	NJ 27		Moderate Injury
4624889	2004	WEST PALMER SQ	HULFISH STREET	Pain
4624896	2004	59 PAUL ROBESON PLACE		Pain
4625033	2004	ROUTE 571	IVY LANE	Pain
4625062	2004	WASHINGTON ROAD	IVY LANE	Pain
4625074	2004	PALMER SQUARE WEST	NASSAU ST.	Pain
4625090	2004	WITHERSPOON STREET	MACLEAN STREET	Pain
4625109	2004	HULFISH ST	WITHERSPOON STREET	Pain
4625130	2004	WITHERSPOON STREET	FRANKLIN AVE.	Pain
4625143	2004	NJ 27		Pain
4625144	2004	CHAMBERS ST	HULFISH ST.	Pain
4625148	2004	UNIVERSITY PLACE	ALEXANDER STREET	Pain
4625211	2004	WASHINGTON RD	IVY LANE	Pain
4625252	2004	PAUL ROBESON PLACE	US 206	Pain
4625663	2004	ELM DR EXTENSION	WASHINGTON ROAD	Incapacitating Injury
4625110	2004	MOORE ST	FRANKLIN AVENUE	Incapacitating Injury
4943205	2005	FRANKLIN AVE	HARRISON STREET	Moderate Injury
4943739	2005	1066 STUART RD	CHERRY HILL RD.	Moderate Injury
4943336	2005	HAMILTON AVE	MOORE ST.	Pain
4943667	2005	ROUTE 571	FACULTY ROAD	Moderate Injury
4943668	2005	ROUTE 571	IVY LANE	Moderate Injury
4943653	2005	MERCER COUNTY 604	GENERAL JOHNSON ROAD	Pain
4943217	2005	NJ 27	VANDERVENTER AVENUE	Moderate Injury
4943453	2005	WITHERSPOON ST	SPRING STREET	Moderate Injury

4943465	2005	MOORE ST	WIGGINS STREET	Moderate Injury
6819083	2006	36 UNIVERSITY PLACE		Moderate Injury
6819183	2006	US 206	STOCKTON STREET	Moderate Injury
6819429	2006	ALEXANDER ST	COLLEGE ROAD	Moderate Injury
6819262	2006	HULFISH STREET	WITHERSPOON STREET	Pain
6819299	2006	HULFISH ST	WITHERSPOON STREET	Pain
6819403	2006	CHAMBERS ST	BANK STREET	Pain
6819856	2006	301 NORTH HARRISON STREET	TERHUNE ROAD	Pain
6819304	2006	ALEXANDER RD	UNIVERSITY PLACE	Moderate Injury
6819204	2006	ROUTE 571	IVY LANE	Moderate Injury
6819424	2006	UNIVERSITY PLACE	EDWARDS PLACE	Moderate Injury
6819392	2006	NJ 27	WITHERSPOON STREET	Pain
6819428	2006	NJ 27	CR 571	Moderate Injury
6819196	2006	US 206	RT 27	Pain
6819177	2006	NJ 27	CHARLTON STREET	Moderate Injury
6819495	2006	101 BROOKSTONE DR		Incapacitating Injury
7118969	2007	OLDEN ST	WILLIAM STREET	Moderate Injury
7119119	2007	WASHINGTON ROAD	PROSPECT AVE	Moderate Injury
7119006	2007	HULFISH STREET	PALMER SQUARE EAST	Pain
7119296	2007	301 NORTH HARRISON ST		Pain
7119415	2007	HENRY AVE	WITHERSPOON STREET	Pain
7119615	2007	FACULTY ROAD	ELM DRIVE	Pain
7118912	2007	ROUTE 571	IVY LANE	Moderate Injury
7119018	2007	ROUTE 571	PROSPECT AVENUE	Pain
7118911	2007	NJ 27	UNIVERSITY PLACE	Pain
7119097	2007	ROUTE 571	WILLIAM STREET	Pain
7119111	2007	NJ 27	PALMER SQUARE EAST	Pain
7118986	2007	NJ 27	CHESTNUT ST	Moderate Injury
7119536	2007	US 206	MOUNTAIN AVENUE	Incapacitating Injury
7427659	2008	727 STATE ROAD (PARKING LOT)		Incapacitating Injury
7427317	2008	HARRISON STREET	TERHUNE ROAD	Moderate Injury
7427156	2008	HULFISH STREET	WITHERSPOON STREET	Pain
7427167	2008	PAUL ROBESON PLACE	CR 626	Pain
7427256	2008	301 N HARRISON ST		Pain
7427456	2008	ALEXANDER RD	UNIVERSITY PLACE	Incapacitating Injury
7426966	2008	US 206	ELM DRIVE	Pain
7427051	2008	UNIVERSITY PLACE	COLLEGE ROAD	Pain
7427071	2008	ROUTE 571	WILLIAM STREET	Pain
7427045	2008	US 206	NASSAU STREET	Pain
7427182	2008	UNIVERSITY PLACE	NASSAU STREET	Pain
7427141	2008	NJ 27	S TULANE ST	Moderate Injury
7426949	2008	NJ 27	WASHINGTON RD	Pain
7427031	2008	WITHERSPOON ST	SPRING STREET	Pain
7426818	2008	US 206	HODGE RD	Moderate Injury

7427170	2008	NJ 27	HARRISON STREET	Moderate Injury
7426930	2008	NJ 27	HARRISON STREET	Moderate Injury
7427154	2008	FRANKLIN ST	HARRIS ROAD	Moderate Injury
7427259	2008	S HARRISON ST	FRANKLIN AVE.	Pain
7426819	2008	LIBRARY PLACE	US 206	Incapacitating Injury
7728299	2009	HARRISON STREET	CR 606	Moderate Injury
7728329	2009	MERCER ST	NASSAU ST	Moderate Injury
7728617	2009	PRETTY BROOK ROAD	CRADLE ROCK ROAD	Moderate Injury
7728865	2009	EWING STREET	VALLEY ROAD	Moderate Injury
7728103	2009	PROSPECT AVE	OLDEN ST.	Pain
7728131	2009	WIGGINS ST	WITHERSPOON STREET	Pain
7728335	2009	DICKINSON STREET	UNIVERSITY PLACE	Pain
7728887	2009	ALEXANDER RD	FACULTY ROAD	Pain
7728092	2009	ROUTE 571	IVY LANE	Pain
7728047	2009	NJ 27	WITHERSPOON ST	Moderate Injury
7728269	2009	NJ 27	WITHERSPOON ST	Pain
7728255	2009	NJ 27	S TULANE ST	Pain
7728319	2009	NJ 27	S TULANE ST	Pain
7728240	2009	US 206	CLEVELAND LA	Pain
7728199	2009	PROSPECT AVE	FORESTER DRIVE	Moderate Injury
7728220	2009	FRANKLIN ST	WITHERSPOON ST.	Moderate Injury
7728455	2009	VALLEY RD	JEFFERSON RD.	Moderate Injury
3446716	2010	HARRISON STREET	HAMILTON AVENUE	Pain
3446731	2010	NJ 27	ROUTE 571 / VANDEVENTER AVE / WASHI	Pain
3446875	2010	HARRISON STREET	HAMILTON AVENUE	Pain
3446880	2010	MOORE ST		Pain
3446904	2010	WIGGINS ST	VANDEVENTER AVE.	Pain
3446937	2010	301 NORTH HARRISON STREET		Pain
3447328	2010	US 206	EWING ST	Pain
3446529	2010	ROUTE 571	FACULTY RD	Incapacitating Injury
3446624	2010	NJ 27	MOORE ST	Moderate Injury
3447060	2010	50 CHERRY HILL ROAD	UNITARIAN CHURCH NORTH SIDE PARKIN?	Incapacitating Injury
3446994	2010	LEIGH AVENUE	JOHN STREET	Incapacitating Injury
3447117	2010	WITHERSPOON ST	GUYOT AVENUE	Incapacitating Injury
3743198	2011	WITHERSPOON ST	GREEN ST.	Moderate Injury
3743203	2011	MOORE ST	HOUGHTON AVENUE	Moderate Injury
3743247	2011	WITHERSPOON STREET	TORREY LANE	Moderate Injury
3743280	2011	WIGGINS STREET	NORTH TULANE STREET	Moderate Injury
3743393	2011	JEFFERSON RD	FRANKLIN AVE.	Moderate Injury
3743438	2011	NJ 27	ROUTE 571 / VANDEVENTER AVE / WASHI	Moderate Injury

3743201	2011	WITHERSPOON ST	SPRING STREET	Pain
3743254	2011	HODGE RD	ELM ROAD	Pain
3743380	2011	NJ 27	MOORE ST	Pain
3743386	2011	SPRING STREET	S. TULANE STREET	Pain
3743387	2011	ALEXANDER RD	MERCER ST.	Pain
3743461	2011	WITHERSPOON ST	GREEN STREET	Pain
3743535	2011	ROUTE 571	PROSPECT AVE	Pain
3743559	2011	NJ 27	S TULANE ST	Pain
3743712	2011	EINSTEIN DRIVE	OLDEN LANE	Pain
3743791	2011	NORTH HARRISON STREET	VALLEY ROAD	Pain
3744037	2011	301 NORTH HARRISON ST	PARKING LOT OF PRINCETON SHOPPING ?	Pain
4033399	2012	HULFISH ST	WITHERSPOON ST.	Moderate Injury
4033507	2012	WIGGINS ST	N. TULANE ST.	Moderate Injury
4033581	2012	WITHERSPOON ALLEY		Moderate Injury
4033592	2012	WIGGINS ST	MOORE ST.	Moderate Injury
4033631	2012	UNIVERSITY PLACE	NASSAU STREET	Moderate Injury
4033682	2012	HARRISON STREET	NASSAU STREET	Moderate Injury
4033683	2012	NJ 27	ROUTE 571 / VANDEVENTER AVE / WASHI	Moderate Injury
4033685	2012	UNIVERSITY PLACE	COLLEGE ROAD	Moderate Injury
4033732	2012	11 UNIVERSITY PLACE		Moderate Injury
4033796	2012	MERCER COUNTY 629	HARTLEY AVENUE	Moderate Injury
4033984	2012	NORTH HARRISON STREET	VALLEY ROAD	Moderate Injury
4034011	2012	WITHERSPOON ST	HENRY AVENUE	Moderate Injury
4033540	2012	NJ 27	MURRAY PL	Pain
4033641	2012	GRIGGS CORNER LOT		Pain
4033653	2012	NJ 27	PINE ST	Pain
4033662	2012	360 NASSAU ST		Pain
4033694	2012	NJ 27	WITHERSPOON ST	Pain
4033714	2012	ROUTE 571	WILLIAM ST	Pain
4033988	2012	MERCER COUNTY 629	SYCAMORE RD	Pain
4034046	2012	EDGERSTONE ROAD	US 206	Pain
4034158	2012	DUFFY PLACE	STATE ROAD	Pain
4034123	2012	FRANKLIN AVENUE	GROVER AVENUE	Incapacitating Injury
4322219	2013	PROSPECT AVE	CEDAR LANE	Moderate Injury
4322323	2013	US 206	MOUNTAIN AVE	Moderate Injury
4322378	2013	EDWARDS PLACE	UNIVERSITY PLACE	Moderate Injury
4322578	2013	HULFISH STREET	PALMER SQUARE WEST	Moderate Injury
4322749	2013	POE FIELD	PRINCETON UNIVERSITY CAMPUS	Moderate Injury
4316872	2013	41 WILLIAM STREET		Pain
4316875	2013	KARL LIGHT BLVD	GREENBRIER ROW	Pain
4322337	2013	MARKHAM RD	NASSAU ST.	Pain

4322425	2013	WIGGINS STREET	NORTH TULANE STREET	Pain
4322707	2013	NJ 27	PALMER SQUARE EAST	Pain
4322712	2013	HAMILTON AVENUE	GORDON WAY	Pain
4322729	2013	370 NASSAU STREET	HARRISON STREET	Pain
4322829	2013	NJ 27	ROUTE 571 / VANDEVENTER AVE / WASHI	Pain
4322830	2013	NJ 27	ROUTE 571 / VANDEVENTER AVE / WASHI	Pain
4322211	2013	US 206	CHERRY VALLEY RD / PRINCETON AVE	Incapacitating Injury
8054309	2014	PAUL ROBESON PLACE	WITHERSPOON STREET	Moderate Injury
8054339	2014	ALEXANDER STREET	UNIVERSITY PLACE	Moderate Injury
8054349	2014	NJ 27	BANK ST / UNIVERSITY PL	Moderate Injury
8121047	2014	SNOWDEN LN	HERRONTOWN RD	Moderate Injury
8161997	2014	CHERRY VALLEY RD	MOUNTAIN VIEW RD	Moderate Injury
8192931	2014	NJ 27	ROUTE 571 / VANDEVENTER AVE / WASHI	Moderate Injury
8202475	2014	MOORE ST	FRANKLIN AVE	Moderate Injury
8246820	2014	WIGGINS ST	NORTH TULANE STREET	Moderate Injury
8054068	2014	WITHERSPOON ST	PAUL ROBESON PLACE	Pain
8054111	2014	UNIVERSITY PLACE	COLLEGE ROAD	Pain
8054115	2014	WITHERSPOON ST	CLAY STREET	Pain
8054178	2014	PROSPECT AVE	WASHINGTON ROAD	Pain
8054313	2014	US 206	MONUMENT DRIVE	Pain
8145675	2014	US HIGHWAY 206	VALLEY RD	Pain
8145695	2014	125 FACULTY RD W	ALEXANDER ST	Pain
8166551	2014	US HIGHWAY 206	STOCKTON ST	Pain
8192944	2014	45 WILLIAM ST	CHARLTON ST	Pain
8217776	2014	ROUTE 571	FACULTY RD	Incapacitating Injury
8311094	2015	HAMILTON AVE	HARRISON ST	Moderate Injury
8421341	2015	PRINCETON AVE	PATTON AVE	Moderate Injury
8538214	2015	N HARRISON ST	FRANKLIN AVE	Moderate Injury
8538297	2015	MOORE ST	FRANKLIN AVE	Moderate Injury
8546840	2015	US 206	LIBRARY PL	Moderate Injury
8546872	2015	US 206	HODGE RD / PAUL ROBESON PL	Moderate Injury
8311046	2015	SPRING ST	WITHERSPOON ST	Pain
8311065	2015	ALEXANDER RD	FACULTY ROAD	Pain
8396353	2015	US 206	NJ 27 / MONUMENT DR / NASSAU ST	Pain
8396372	2015	NJ 27	CHESTNUT ST	Pain

8538278	2015	NJ 27	CHESTNUT ST	Pain
8546852	2015	UNIVERSITY PLACE	NJ 27	Pain