

# John Witherspoon Middle School Princeton, NJ



## School Travel Plan June 2014

Prepared by Greater Mercer TMA



**NEW JERSEY**  
**Safe Routes to School**



### John Witherspoon Middle School Description:

John Witherspoon Middle School is located at 217 Walnut Lane in Princeton, NJ and can be seen in the map below. The school had 738 students in the 2012-2013 school year in three grades, 6<sup>th</sup>, 7<sup>th</sup> and 8<sup>th</sup>. The school day begins at 8:30 and ends at 2:55 but there are many clubs, activities and sports for students to join both before and after the school day.

In addition to school buses, the NJ Transit 610 bus has one pickup at Witherspoon school in the afternoon. It then drops students off at Princeton University Graduate Student Apartments.

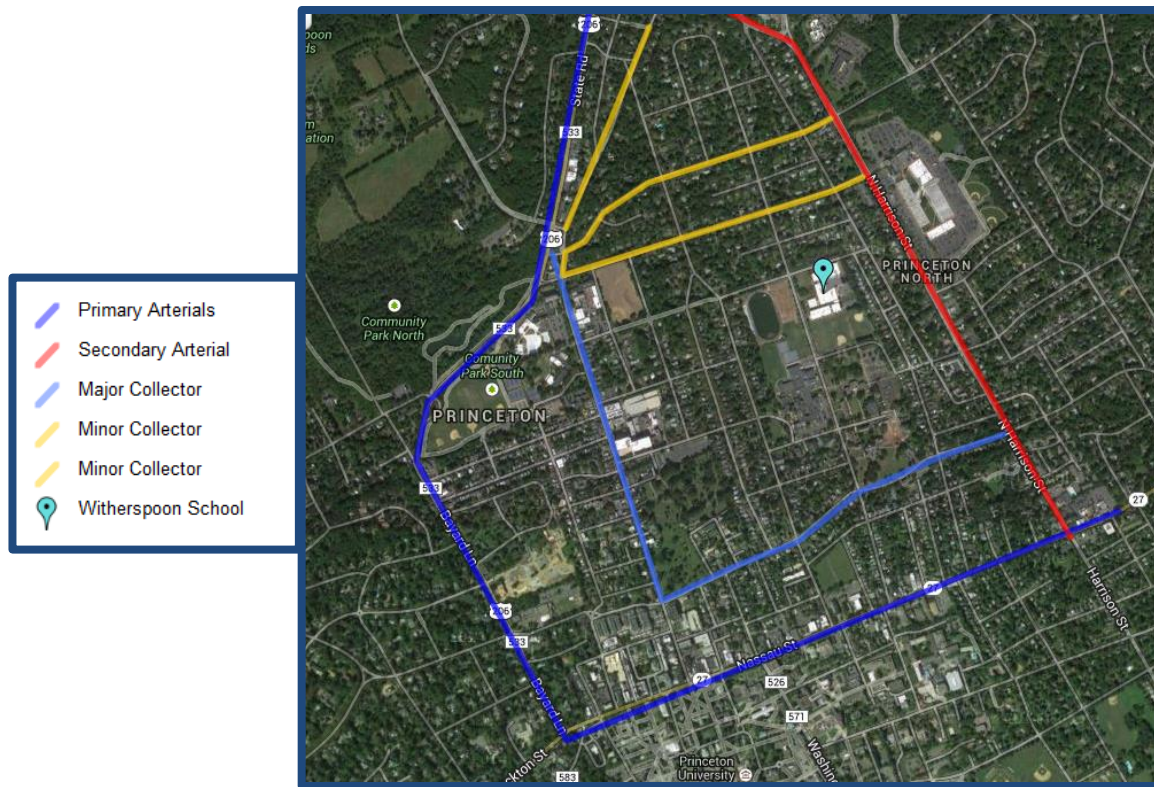
Gym classes appeared to cross Walnut Lane at Guyot Avenue when they take place outside. There are clearly marked crosswalks at this intersection and the speed limit is set at 25 MPH.

### Working Groups and Partnerships:

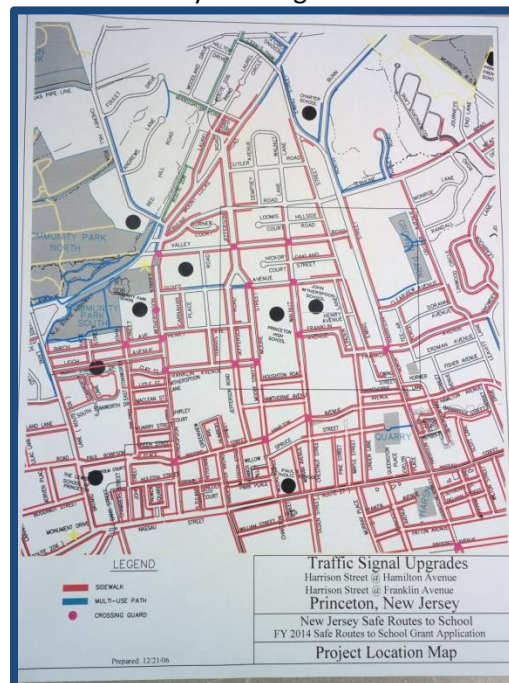
Organization	Role/ Responsibility	Contact
Princeton Government	Community Partner	Deanna Stockton Asst Municipal Engineer 609.921.7077 <a href="mailto:dstockton@princetonnj.gov">dstockton@princetonnj.gov</a>
Princeton Public Schools	Community Partner	Kim McReynolds Grants & Program Specialist 609-806-4203 <a href="mailto:kim_mcreynolds@princetonK12.org">kim_mcreynolds@princetonK12.org</a>
Princeton Public Schools	Community Partner	Marilyn Kothe Transportation Coordinator 609-806-4209
Princeton Pedestrian and Bicycle Advisory Committee	Community Partner	Steve Kruse Chairperson <a href="mailto:S.Kruse@outlook.com">S.Kruse@outlook.com</a>
NJ Department of Transportation	Key Partner	Elise Bremer-Nei Safe Routes to School Program Coordinator 609.530.2765 <a href="mailto:elise.bremer-nei@dot.state.nj.us">elise.bremer-nei@dot.state.nj.us</a>
Voorhees Transportation Center	Key Partner	Sean Meehan Project Manager 848.932.2860 <a href="mailto:smeehan@ejb.rutgers.edu">smeehan@ejb.rutgers.edu</a>
Greater Mercer Transportation Management Association	Key Partner	Aly Dyson Sustainable Transportation Associate 609.452.1491 extension 237 <a href="mailto:adyson@gmtma.org">adyson@gmtma.org</a>

## School Neighborhood:

Witherspoon Middle School is located between Guyot and Franklin streets, adjacent to Princeton High School and the Westminster Choir College, and surrounded by residential neighborhoods. In all directions surrounding the school there are primary arterial roads and collector roads. The students often need to cross these roads to get to and from school.



The sidewalk network is complete and in generally good condition on at least one side of each road, and usually on both sides. A three-block paved multi-use path connects Guyot St segments between Moore St and Carnahan Place.



### Pick Up / Drop Off Safety

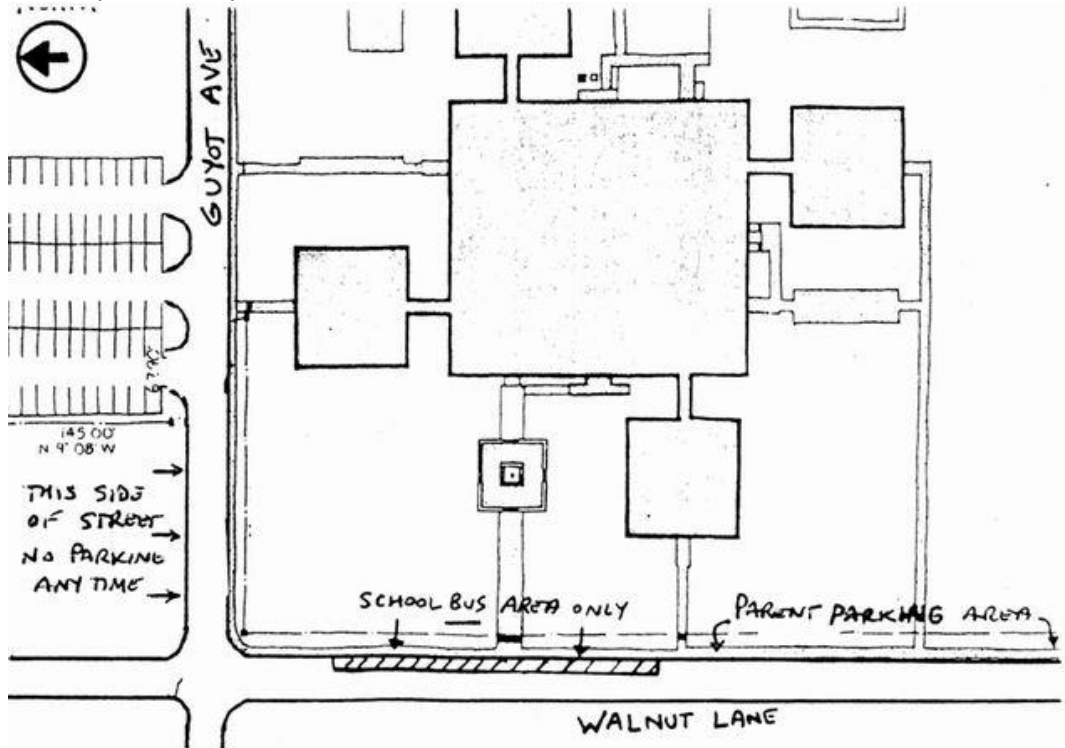
In an effort to improve the safety of children as well as drivers in the area the Princeton Township Committee enacted the following ordinances for John Witherspoon Middle School.

1. There is an area in front of the school (on Walnut Lane) that is a "Bus Parking Only Area 8:00 am – 4:00 pm School Days." All vehicles parked in this area will be ticketed by the Princeton Township Police Department. There are signs posted as well as yellow painted hash marks in the roadway designating the area.
2. There is a "Sport Bus Only Area 8:00 am – 4:00 pm" between the handicapped parking stall (blue painted curb) and the rear driveway to the school on Guyot Avenue.
3. The north side of Guyot Avenue (opposite the school) prohibits stopping or parking at any time. STUDENTS MAY NOT BE DROPPED OFF ON THE NORTH SIDE OF GUYOT AVENUE
4. The north side of Walnut Lane (opposite the school) prohibits stopping or parking at any time. STUDENTS MAY NOT BE DROPPED OFF ON THE NORTH SIDE OF WALNUT LANE

It is also important to note that there are several State laws that regulate parking and traffic:

1. You cannot park within 25 feet of a crosswalk.
2. You cannot park within 50 feet of a stop sign.
3. You can not park within 10 feet of a fire hydrant.
4. You can not stop your car in the lane of travel (blocking traffic)

The Princeton Township Police Department will issue summonses for violations of the above ordinances and statues.



Witherspoon Middle School Dropoff Area



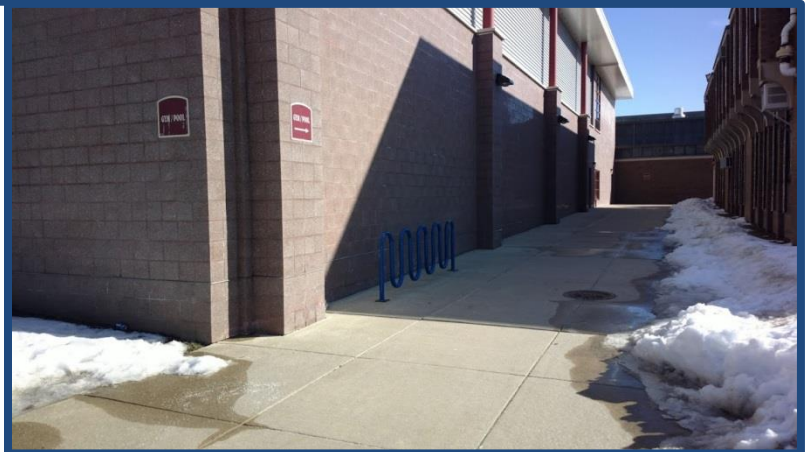
## Transportation Policy

The Board's policy on transportation reflects the district's concern for the safety of its children. Transportation to and from school will be provided for:

1. Elementary and middle school students who live more than two miles from school.
2. High School students who live more than two and one-half miles from school.

## Bicycle Parking

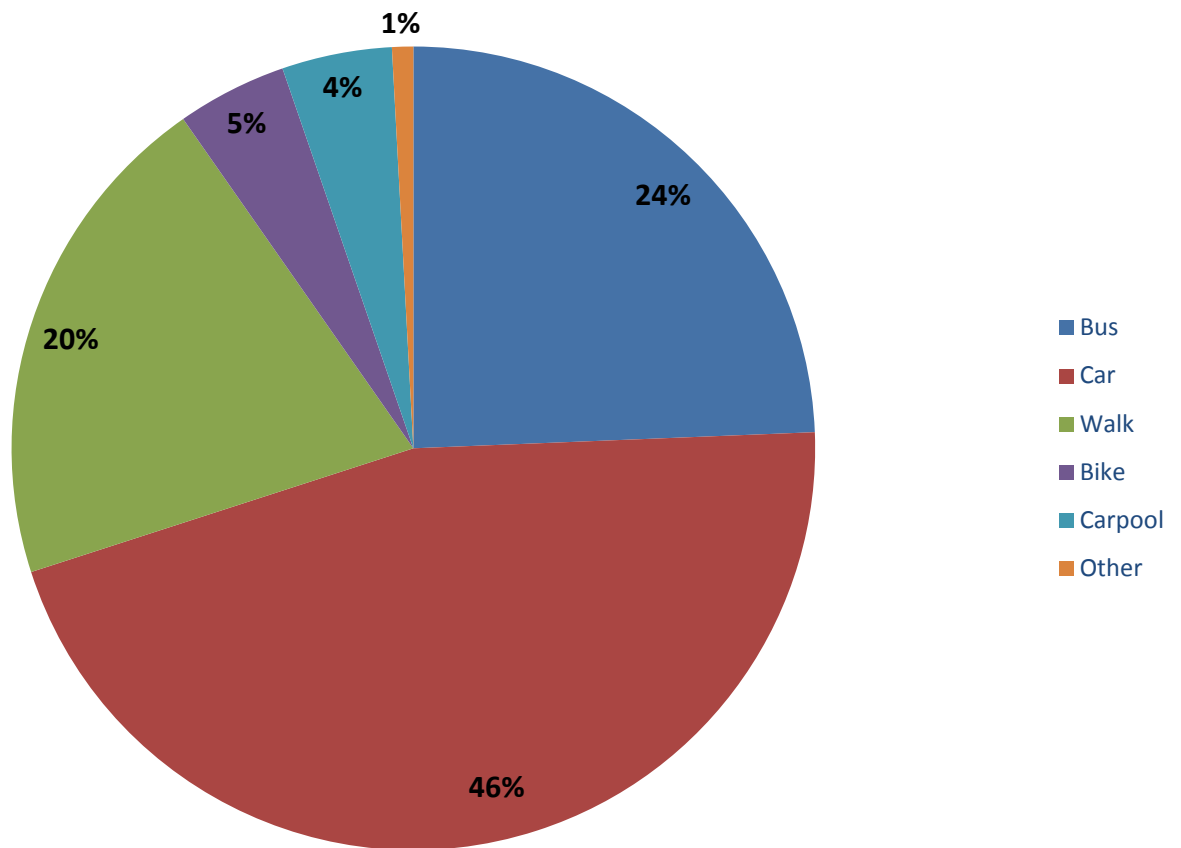
Extensive bicycle parking is available and in use in 2 locations, 60 bike parking spots are located in front of the school by the drop-off area and 9 bike parking spots are on the side near the pool/gym (see pictures below).

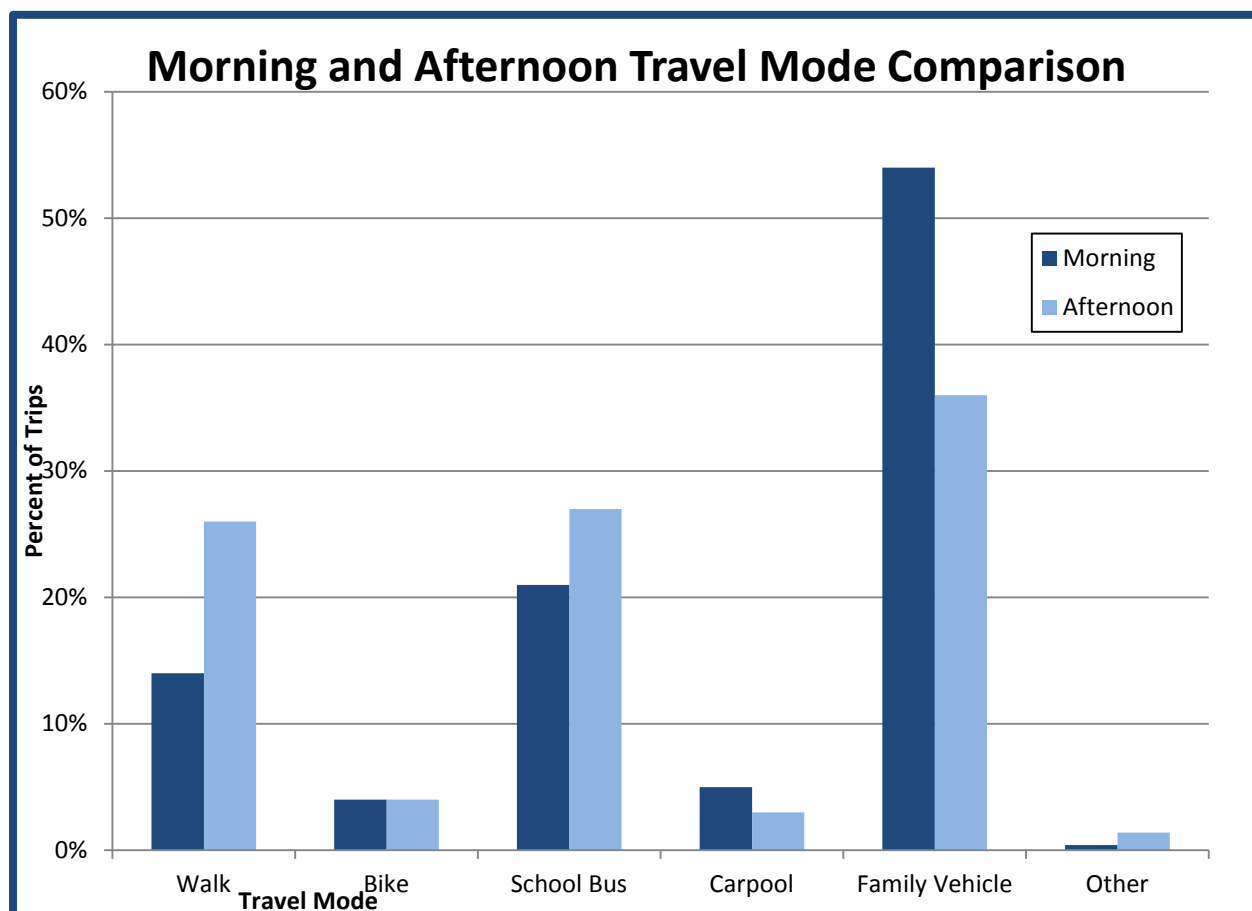


## Walk and Bike Barriers and Opportunities:

In May 2014, a Travel Mode survey was conducted for students at Witherspoon school. Fifty-four percent of students travel in a family vehicle to school in the morning and 36% are in a family vehicle home; this is how the majority of students get to and from school. The school bus is the next most popular way to travel with 21% of students riding the school bus in the morning and 27% in the afternoon. About 14% of students walk to school and 27% walk home from school. Four percent of students bike to and from school. The 'other' mode (1%) of travel can include skateboarding, rollerblading and taking the public bus. The total percentages do not add up to 100% due to rounding.

## How JWS Students Get to School





Morning and Afternoon Travel Mode Comparison							
	Number of Trips	Walk	Bike	School Bus	Carpool	Family Vehicle	Other
Morning	1783	14%	4%	21%	5%	54%	0.4%
Afternoon	1783	26%	4%	27%	3%	36%	1.4%

In October 2005, the Princeton Sidewalk and Bicycle Advisory Committee conducted a survey throughout the Princeton Regional Schools to better understand how students were traveling to school. District-wide 29% of students walked or biked to school, 40% traveled by auto and 31% took the bus. The survey response rate for John Witherspoon Middle School was 36% (239 responses). The top four concerns regarding walking and biking to school were are too great a distance to walk, lack of sidewalks, motorists going too fast and street crossings without crossing guards are too dangerous.

Generally, streets are posted at pedestrian-friendly speeds and Princeton enjoys a culture of respect for pedestrians, based on a history of superior engineering, education and enforcement efforts, which have resulted in high levels of biking and walking to school. Based on the survey information collected, walking and biking rates are lower than the district average at Witherspoon School. A few improvements are suggested in the following pictures to both increase safety and the number of students walking.



**Good:** Bike/ Pedestrian friendly 25mph speed limit

**Potential Improvement:** Sign should read STOP for

**Good:** Share the Road Sign.

**Potential Improvement:** Connect sidewalk to bus stop.



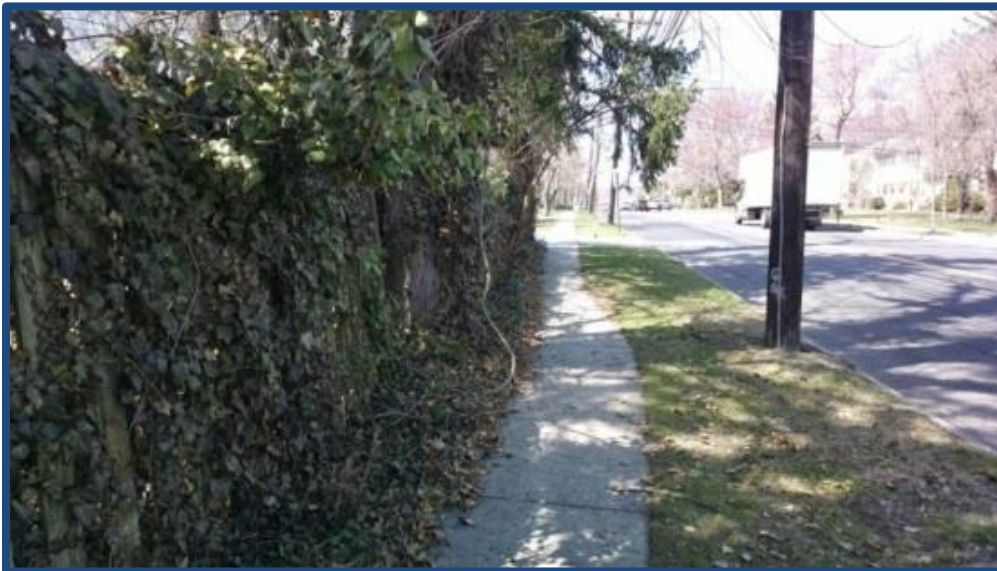
**Good:** ADA compliant curb cuts.

**Potential Improvement:** Upgrade to pedestrian signal heads.



**Good:** Extensive sidewalk network.

**Potential Improvement:**  
Signs (right) and landscaping (below) encroach sidewalk



**Good:** High visibility crosswalks

**Potential Improvement:**  
Consider ADA ramps and bumpy pads.





**Good:** Colored / textured crosswalks.

**Potential Improvement:** Consider Rapid Flashing Beacon



**Good:** Anti-Idling signs

**Potential Improvement:**  
Replace faded signs



**Good:** Sharrows  
in roadway



**Potential Improvement:**  
Curb cut

**Good:** High visibility  
crosswalks and pedestrian  
sign

**Potential Improvement:**  
Consider rapid flashing  
beacon



## Evaluation- Goals and Action Plan:

Engineering			
Action	Responsibility	Time Frame	Estimated Cost
Upgrade signals at Harrison / Franklin and Harrison / Hamilton to include pedestrian countdown signal heads.	Municipality	Medium Term	est. \$200K
Consider pedestrian-activated Rapid Flashing Beacons on the east side of Moore St crossing Hamilton Ave and on the west side of Walnut Ln crossing Hamilton Ave.	Municipality	Medium Term	est. \$40K

Education			
Action	Responsibility	Time Frame	Estimated Cost
Educate students, family members, bus drivers and school employees about drop-off/ pick up zones. Make sure everyone knows the best way to keep students safe and to quickly dismiss students from school.	School, School District	Short Term / Ongoing	Low
Increase community outreach about the health benefits of walking and biking to school.	School, PTO	Short Term	Low
Conduct community wide outreach about Safe Routes to School actions such as walking and biking safety.	School, GMTMA	Short Term/ Ongoing	Low
Establish a program to encourage students to walk and/or bike to school. Examples: Golden Sneaker Award, Walking Wednesday, Walking School Bus	School, GMTMA	Short Term/ Ongoing	Low
Educate community and responsible parties about snow removal on sidewalks near schools.	Public Works	Short Term/ Ongoing	Low

Encouragement			
Action	Responsibility	Time Frame	Estimated Cost
Establish main walking routes, safety corridors, walking school buses – safety in numbers.	School, PTO, GMTMA, Community Groups	Ongoing	Low



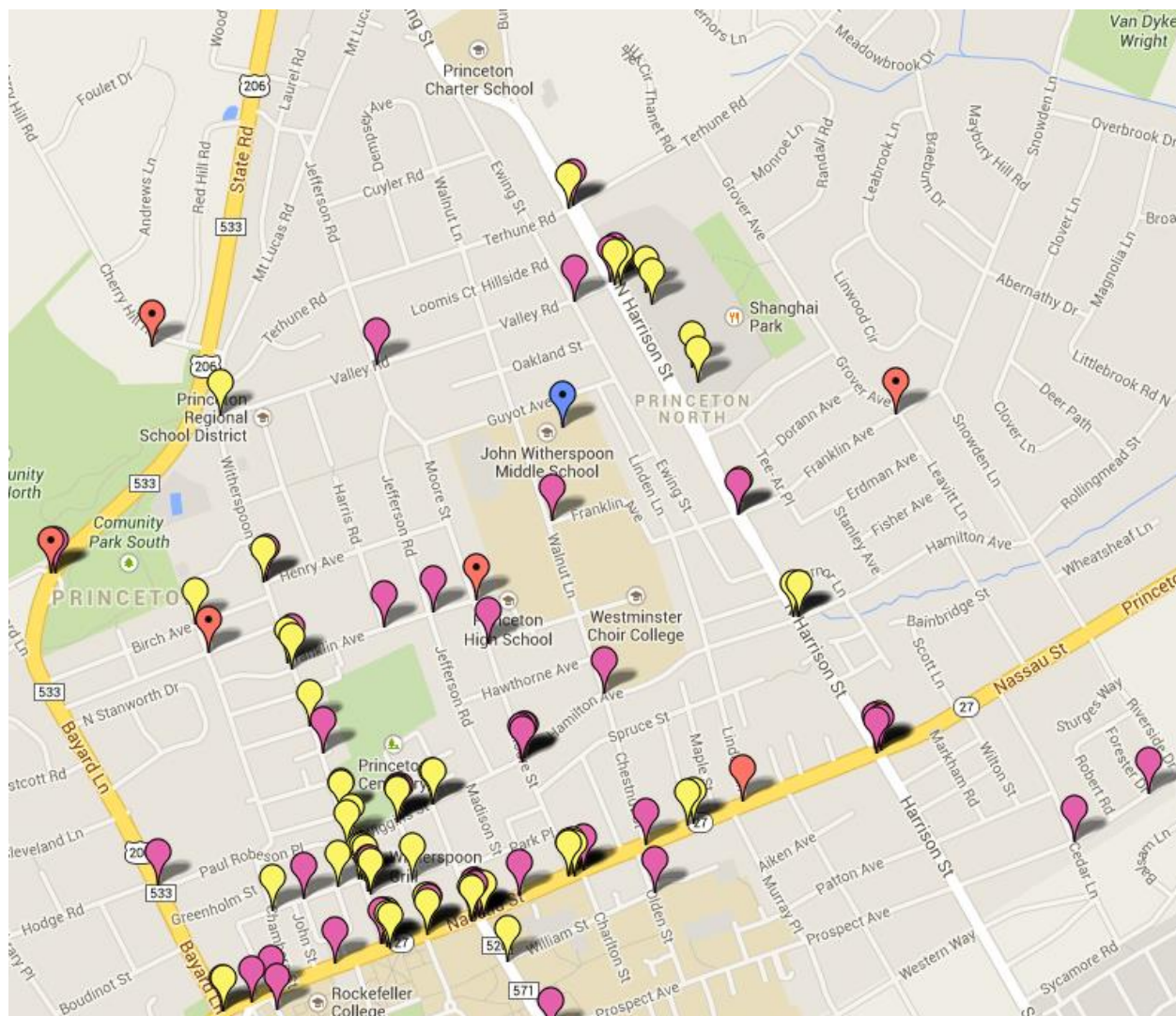
Conduct Student and Parent survey to see what actions and rewards could encourage them to walk to school more – and feel safer walking to school.	School, PTO, GMTMA	Short Term	Low
---	--------------------	------------	-----

Enforcement			
Action	Responsibility	Time Frame	Cost
Enforce speed limits (in general and specifically in school zones), pedestrians walking safely, drivers watching for pedestrians especially at times when students are going to/ from school.	Police	Ongoing	Low / Medium
Enforce motorist compliance with crossing guard instructions.	Police	Ongoing	Low / Medium
Enforce parking laws.	Police	Ongoing	Low / Medium
Conduct structured crosswalk enforcement campaign.	Police	Ongoing	Low / Medium
Increase law enforcement presence seen in the vicinity of Pond Road Middle School.	Police	Ongoing	Low / Medium

Evaluation			
Action	Responsibility	Time Frame	Cost
Conduct periodic travel mode choice surveys (teacher tallies)	School	Annual	Low
Conduct bike ability audit of walking area	School, Township, GMTMA	Short Term	Low
Tour the areas with school, township and TMA personnel to identify areas for improvement	School, Township, GMTMA	Short Term	Low

\*Explanation of funding- If NO additional funding in addition to from regular budgets (public works, police, GMTMA, etc.) is needed – funding is listed as not required. Though additional funding is always appreciated and can often allow actions to be completed more quickly and education efforts to cover more citizens.

## Pedestrian Crashes from Plan4Safety Database, 2003-2014



- Fatality
- Incapacitating Injury
- Moderate Injury
- Pain Injury
- John Witherspoon Middle School

## Plan4Safety Crash Details

ID	Location	Year	Cross Street	Severity
164161	NJ 27	2003	VANDEVENTER AVENUE	Moderate Injury
164184	NJ 27	2003	LINDEN LANE	Fatal
164319	WASHINGTON ROAD	2003	NASSAU STREET	Pain
164396	NJ 27	2003	WITHERSPOON STREET	Moderate Injury
164437	HAMILTON AVENUE	2003	CHESTNUT STREET	Moderate Injury
164457	UNIVERSITY PLACE	2003	ALEXANDER STREET	Moderate Injury
164488	VANDEVENTER AVE	2003	WIGGINS ST.	Pain
164502	NJ 27	2003	PALMER SQUARE WEST	Moderate Injury
164520	MERCER COUNTY 604 Rosedale	2003	Elm	Moderate Injury
164679	NORTH ENTRANCE PRINCETON SHOPPING ?	2003	NORTH HARRISON STREET	Moderate Injury
164706	NJ 27	2003	River Rd	Moderate Injury
164740	WITHERSPOON ST	2003	VALLEY ROAD	Pain
164962	301 NO HARRISON ST- PRINCETON SHO?	2003	VALLEY RD.	Pain
486608	WEST PALMER SQ	2004	HULFISH STREET	Pain
486681	WIGGINS ST	2004	NORTH TULANE STREE	Moderate Injury
486734	NJ 27	2004	Thos Sweet xwalk?	Moderate Injury
486752	ROUTE 571	2004	IVY LANE	Pain
486772	WITHERSPOON STREET	2004	FRANKLIN AVENUE	Moderate Injury
486807	ALEXANDER ST	2004	COLLEGE RD.	Moderate Injury
486809	WITHERSPOON STREET	2004	MACLEAN STREET	Pain
486822	HAMILTON AVE	2004	MOORE ST.	Moderate Injury
486828	HULFISH ST	2004	WITHERSPOON STREET	Pain
486829	MOORE ST	2004	FRANKLIN AVENUE	Incapacitating Injury
486849	WITHERSPOON STREET	2004	FRANKLIN AVE.	Pain
486862	NJ 27	2004	chestnut	Pain
486890	ROUTE 583 Princeton Pike Mercer St	2004	Greenhouse	Moderate Injury
487083	ALEXANDER STREET	2004	WEST DRIVE	Moderate Injury
487110	NJ 27	2004		Moderate

				Injury
487382	ELM DR EXTENSION	2004	WASHINGTON ROAD	Incapacitating Injury
804925	FRANKLIN AVE	2005	HARRISON STREET	Moderate Injury
804937	NJ 27	2005	VANDERVENTER AVENUE	Moderate Injury
805056	HAMILTON AVE	2005	MOORE ST.	Pain
805173	WITHERSPOON ST	2005	SPRING STREET	Moderate Injury
805185	MOORE ST	2005	WIGGINS STREET	Moderate Injury
805373	MERCER COUNTY 604 - Rosedale / Elm	2005	GENERAL JOHNSON ROAD	Pain
805387	ROUTE 571	2005	FACULTY ROAD	Moderate Injury
805388	ROUTE 571	2005	IVY LANE	Moderate Injury
805459	1066 STUART RD	2005	CHERRY HILL RD.	Moderate Injury
1108112	NJ 27	2006	CHARLTON STREET	Moderate Injury
1108118	US 206	2006	STOCKTON STREET	Moderate Injury
1108131	US 206	2006	RT 27	Pain
1108139	ROUTE 571	2006	IVY LANE	Moderate Injury
1108197	HULFISH STREET	2006	WITHERSPOON STREET	Pain
1108234	HULFISH ST	2006	WITHERSPOON STREET	Pain
1108239	ALEXANDER RD	2006	UNIVERSITY PLACE	Moderate Injury
1108327	NJ 27	2006	WITHERSPOON STREET	Pain
1108338	CHAMBERS ST	2006	BANK STREET	Pain
1108359	UNIVERSITY PLACE	2006	EDWARDS PLACE	Moderate Injury
1108363	NJ 27	2006	CR 571	Moderate Injury
1108364	ALEXANDER ST	2006	COLLEGE ROAD	Moderate Injury
1108430	101 BROOKSTONE DR	2006		Fatal
1108791	301 NORTH HARRISON STREET	2006	TERHUNE ROAD	Pain
1407844	ROUTE 571	2007	IVY LANE	Moderate Injury
1407889	ROUTE 571	2007	IVY LANE	Moderate Injury
1407901	OLDEN ST	2007	WILLIAM STREET	Moderate Injury



1407918	NJ 27	2007	CHESTNUT ST	Moderate Injury
1407938	HULFISH STREET	2007	PALMER SQUARE EAST	Pain
1408029	ROUTE 571	2007	WILLIAM STREET	Pain
1408051	WASHINGTON ROAD	2007	PROSPECT AVE	Moderate Injury
1408228	301 NORTH HARRISON ST	2007	Princeton Shopping Center	Pain
1408347	HENRY AVE	2007	WITHERSPOON STREET	Pain
1408468	US 206	2007	MOUNTAIN AVENUE	Incapacitating Injury
1709059	US 206	2008	HODGE RD	Moderate Injury
1709060	LIBRARY PLACE	2008	US 206	Incapacitating Injury
1709171	NJ 27	2008	HARRISON STREET	Moderate Injury
1709190	NJ 27	2008	WASHINGTON RD	Pain
1709272	WITHERSPOON ST	2008	SPRING STREET	Pain
1709382	NJ 27	2008	S TULANE ST	Moderate Injury
1709395	FRANKLIN ST	2008	HARRIS ROAD	Moderate Injury
1709397	HULFISH STREET	2008	WITHERSPOON STREET	Pain
1709411	NJ 27	2008	HARRISON STREET	Moderate Injury
1709497	301 N HARRISON ST	2008		Pain
1709500	S HARRISON ST	2008	FRANKLIN AVE.	Pain
1709558	HARRISON STREET	2008	TERHUNE ROAD	Moderate Injury
1709697	ALEXANDER RD	2008	UNIVERSITY PLACE	Incapacitating Injury
1709900	727 STATE ROAD (PARKING LOT)	2008		Incapacitating Injury
2232142	WIGGINS ST	2009	WITHERSPOON STREET	Pain
2232339	VALLEY RD	2009	JEFFERSON RD.	Moderate Injury
2232513	EWING STREET	2009	VALLEY ROAD	Moderate Injury
2452299	NJ 27	2009	WITHERSPOON ST	Moderate Injury
2452472	FRANKLIN ST	2009	WITHERSPOON ST.	Moderate Injury
2452492	US 206	2009	CLEVELAND LA	Pain
2452507	NJ 27	2009	S TULANE ST	Pain
2452521	NJ 27	2009	WITHERSPOON ST	Pain
2452551	HARRISON STREET	2009	CR 606 - not, really Hamilton Ave, CR606 name in Trenton	Moderate Injury

2452571	NJ 27	2009	S TULANE ST	Pain
2452581	MERCER ST	2009	NASSAU ST	Moderate Injury
2452869	PRETTY BROOK ROAD	2009	CRADLE ROCK ROAD	Moderate Injury
2677490	ROUTE 571	2010	FACULTY RD	Incapacitating Injury
2677584	NJ 27	2010	MOORE ST	Moderate Injury
2677656	HARRISON STREET	2010	HAMILTON AVENUE	Pain
2677685	WIGGINS ST	2010	VANDEVENTER AVE.	Pain
2677711	301 NORTH HARRISON STREET	2010		Pain
2677762	LEIGH AVENUE	2010	JOHN STREET	Incapacitating Injury
2677888	US 206	2010	EWING ST	Pain
2809654	50 CHERRY HILL RD	2010	UNITARIAN CHURCH N SIDE PARKIN?	Incapacitating Injury
2815223	HARRISON ST	2010	HAMILTON AVE	Pain
2840111	NJ HIGHWAY 27	2010	RTE E 571 / VANDEVENTER AVE / WASH	Pain
2944462	WITHERSPOON ST	2011	GREEN ST	Pain
2986531	WITHERSPOON ST	2011	TORREY LN	Moderate Injury
2986543	NJ HIGHWAY 27	2011	S TULANE ST	Pain
3089951	WIGGINS ST	2011	N TULANE ST	Moderate Injury
3101589	301 N HARRISON ST	2011	PARKING LOT OF PRINCETON SHOPPING ?	Pain
3110956	NJ HIGHWAY 27	2011	MOORE ST	Pain
3110958	SPRING ST	2011	S TULANE ST	Pain
3121937	JEFFERSON RD	2011	FRANKLIN AVE	Moderate Injury
3151264	NJ HIGHWAY 27	2011	RTE E 571 / VANDEVENTER AVE / WASH	Moderate Injury
3192664	N HARRISON ST	2011	VALLEY RD	Pain
3232197	WITHERSPOON ST	2011	GREEN ST	Moderate Injury
3251372	WITHERSPOON ST	2011	SPRING ST	Pain
3251374	MOORE ST	2011	HOUGHTON AVE	Moderate Injury
3298289	BIRCH AVE	2012	JOHN ST	PDO
3299977	HARRISON ST	2012	NASSAU ST	Moderate Injury
3299987	N HARRISON ST	2012	VALLEY RD	Moderate Injury
3315583	NJ HIGHWAY 27	2012	RTE E 571 / VANDEVENTER AVE / WASH	Moderate Injury

3315587	NJ HIGHWAY 27	2012	WITHERSPOON ST	Pain
3315599	WITHERSPOON ST	2012	HENRY AVE	Moderate Injury
3322369	UNIVERSITY PL	2012	COLLEGE RD	Moderate Injury
3375848	11 UNIVERSITY PL	2012		Moderate Injury
3401818	FRANKLIN AVE	2012	GROVER AVE	Incapacitating Injury
3421905	WIGGINS ST	2012	MOORE ST	Moderate Injury
3431848	WIGGINS ST	2012	N TULANE ST	Moderate Injury
3443813	MERCER CTY 629 Harrison	2012	HARTLEY AVE	Moderate Injury
3499494	UNIVERSITY PL	2012	NASSAU ST	Moderate Injury
3513148	NJ HIGHWAY 27	2012	PINE ST	Pain
3527298	HULFISH ST	2012	WITHERSPOON ST	Moderate Injury
3637435	NJ HIGHWAY 27	2013	RTE E 571 / VANDEVENTER AVE / WASH	Pain
3637436	NJ HIGHWAY 27	2013	RTE E 571 / VANDEVENTER AVE / WASH	Pain
3674155	370 NASSAU ST	2013	HARRISON ST	Pain
3695199	US HIGHWAY 206	2013	CHERRY VALLEY RD PRINCETO AVE	Incapacitating Injury
3697516	PROSPECT AVE	2013	CEDAR LN	Moderate Injury
3701304	POE FLD	2013	PRINCETON UNIVERSITY CAMPUS	Moderate Injury
3752716	US HIGHWAY 206	2013	MOUNTAIN AVE	Moderate Injury
3771259	EDWARDS PL	2013	UNIVERSITY PL	Moderate Injury
3800714	WIGGINS ST	2013	N TULANE ST	Pain
3837176	HULFISH ST	2013	PALMER SQ W	Moderate Injury
3873149	WITHERSPOON ST	2014	PAUL ROBESON PL	Pain
3873191	WITHERSPOON ST	2014	CLAY ST	Pain