

Session 2: Talk the Walk: Putting your Vision into a Plan



William Riviere

Principal Planner and State Safe Routes to School Coordinator, NJDOT



Sean Meehan

NJ Safe Routes Resource Center, Rutgers University



Jon Dugan

New Jersey Safe Routes Resource Center, Rutgers University





Talk the Walk: Putting your Vision into a Plan



School Travel Plans

A written document that contains plans and goals targeting a safer, more sustainable, and healthier school environment.

“STP is intended to be a living document that becomes part of school policy...revisited and updated on a regular basis.”

Source: Canadian STP Sample



Getting people interested

Why School Travel Plans are Important

- ❑ Creates awareness around school travel issues
- ❑ “Maps out” how to improve pedestrian and bicycle travel
- ❑ Identifies short term solutions for immediate action as well as long term ones that may require further planning



Getting people interested



Why School Travel Plans are Important (cont.)

- ❑ Creates partnerships between the school, municipality, and surrounding community
- ❑ Contributes to healthier and more environmentally conscious students and community members
- ❑ Helps secure funds and grants
- ❑ Fulfills requirements toward receiving SRTS Recognition, Sustainable Jersey and SJ for Schools certifications.

Parents

- ☐ PTA Representatives

School/School District Representatives

- ☐ Superintendent
- ☐ Board of Education
- ☐ Principal
- ☐ Teachers
- ☐ Other staff (School Nurse, coach, Transportation Supervisor, etc.)
- ☐ Students

Municipal/County Representatives

- ☐ Mayor/Councilmembers/Freeholders
- ☐ Police Department
- ☐ Crossing guards/CG supervisor
- ☐ Traffic Engineering
- ☐ Planning Department
- ☐ Parks/Recreation Department
- ☐ Environmental Department

Community Representatives

- ☐ Local Non-Profits
- ☐ Bike/Ped Advocates
- ☐ Green Teams
- ☐ Other Local and Regional Advocates

Who Should be Involved?



School Travel Plan Sections

Required 6 Elements:

1. School Description
2. Working Group & Partnerships
3. Map(s) of School Neighborhood
4. Walk / Bike Barriers & Opportunities
5. Goals & Actions
6. Program Evaluation & Monitoring



School Travel Plan Sections

Required – School Description

Required Information	More Detailed Information
<ul style="list-style-type: none">• Name• Location• Neighborhood Description• Grades• Number of students• School hours (including breakfast/ afterschool/ special program hours)• Existing SRTS programs/projects	<ul style="list-style-type: none">• Special needs• Demographic information• Other related efforts

School Description

Location and hours

- ❑ 175 Girard Avenue
- ❑ 8:45am – 3:15pm
 - ❑ Breakfast – 8am
 - ❑ Aftercare dismisses at 6pm

Public school

- ❑ K–5, 400 students

Neighborhood Description

- ❑ Residential Area – close to train tracks and Route 1
- ❑ High speed car traffic
- ❑ A few blocks from George Page Park and other pocket parks



School Travel Plan Sections

Required – Working Group & Partnerships

Required Information

- Working group members names and contact information. *It is strongly recommended that representatives from both the school and municipality be included.*
- Supporting organizations

More Detailed Information

- Any other relevant information about the group or its structure.

Plans Need Local Involvement

Why is local involvement important?

- ❑ Locals are experts – experience the neighborhood every day
- ❑ Often know the right people to bring to the table – can help get things done faster
- ❑ Helps to establish “ownership” of the STP
- ❑ Can lead to more local involvement and “open doors” for future SRTS programs



Working group & Partnerships

Organization	Role/ Responsibility	Contact
City of Trenton	Community Partner	Hoggarth Stephen Principal Traffic Analyst 609.989.3612
Residents	Community Partners	Mother and student
East Trenton Collaborative/ NJPHK-Trenton	Community Partner	Andrew Carten acarten@ecityworks.com
NJ Department of Transportation	Key Partner	Elise Bremer-Nei Safe Routes to School Program Coordinator 609.530.2765 elise.bremer-nei@dot.state.nj.us
NJ Partnership for Healthy Kids- Trenton	Key Partner	Marissa Davis Project Manager 609.278.9677 mdavis@trentonymca.org
Voorhees Transportation Center	Key Partner	Sean Meehan Project Manager 848.932.2860 smeehan@ejb.rutgers.edu
Greater Mercer Transportation Management Association	Key Partner	Aly Dyson Sustainable Transportation Associate 609.452.1491 extension 237 adyson@gmtma.org

School Travel Plan Sections

Required – Map(s) of School Neighborhood

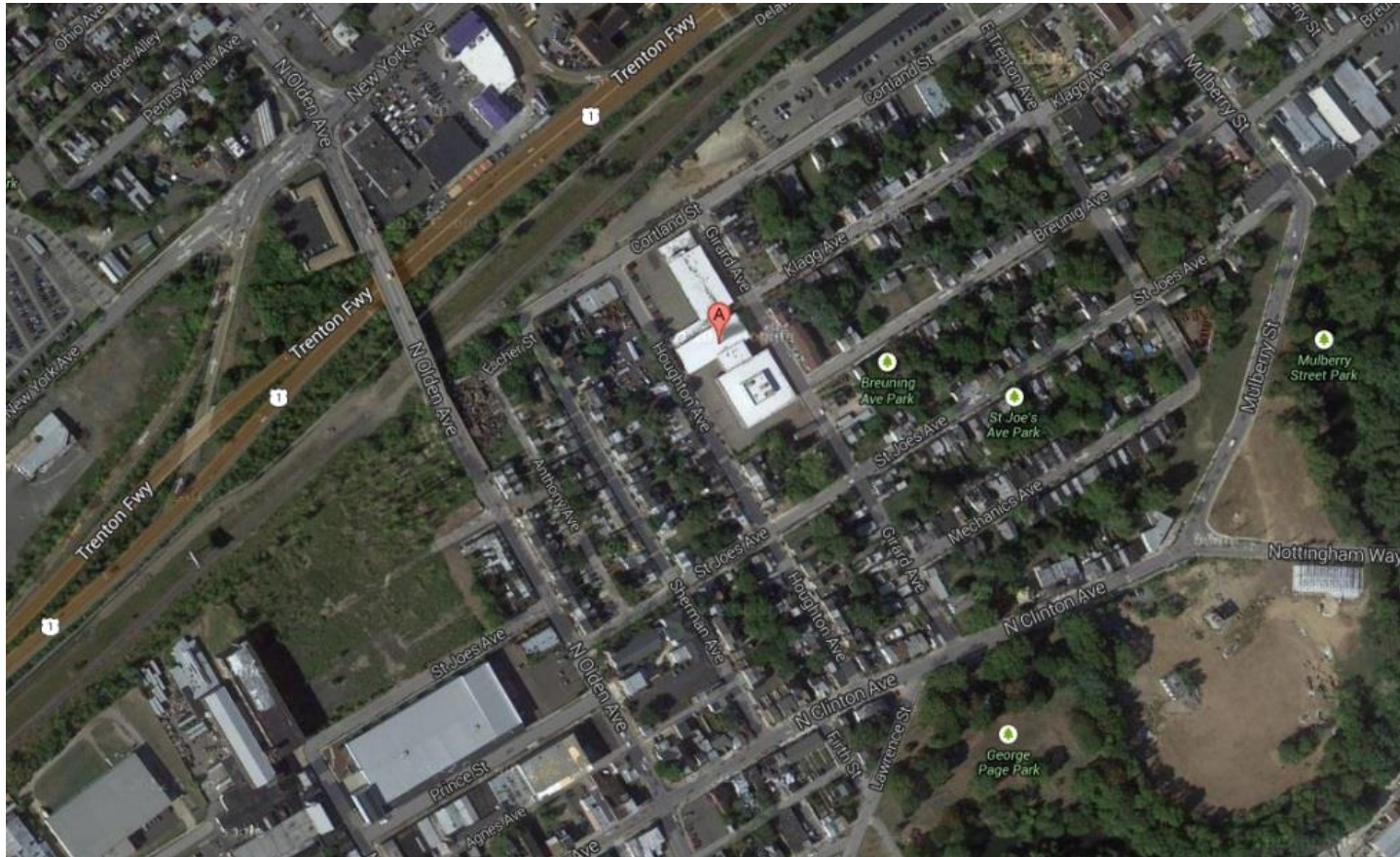
Required Information

- Show 2-mile area around school
- Address of school
- Crossing guard locations
- Pick up/drop off locations
- Route of walkability/bikeability assessments completed
- Detailed map key and/or narrative description of map

More Detailed Information

- Crosswalks/ school crossings
- Places which draw traffic (retail, recreation)
- Where Students Live

Map(s) of School Neighborhood



School Neighborhood:

Wilson Elementary is between Girard Avenue and Houghton Avenue in Trenton. It is surrounded by residential neighborhoods, train tracks, Route 1, a water treatment facility, pocket parks and nearby is George Page Park. George Page Park is a nice place for families to go and children to play, but it is difficult to get to because it is on the far side of North Clinton Avenue. Cars speed very quickly on this road and there are no clearly marked crosswalks. The School is seen below, marked as A.

Map(s) of School Neighborhood

Parents drop students off on all sides of the school (red line – on map below). There is no one primary location that the parents use to drop off or pick up students. Parking at Wilson is on both the Girard Avenue and Houghton Avenue sides of the school as indicated by the green dashed lines. When teachers pull in or out of parking spaces, they cross the sidewalk next to the school. There is no single driveway, it is a long parking lot that parallels the road and the sidewalk is used as a driveway along the entire route. The afternoon bus line up occurs along the blue dash/dot line on Houghton Avenue. All of the different modes of travel make the area right around Wilson Elementary School a busy place at arrival and dismissal time.



Wilson school: Red line is the morning and afternoon parent drop off/ pick up, green dashed lines are teacher parking (where they need to drive across the sidewalk to get in/out), blue dashed/ dot line is afternoon bus line up.

Required Information

- Area speed limits
- School policies
- Plans for including children with disabilities
- Concerns – sidewalk condition, road crossing/crosswalks, traffic issues, etc.
- Photos of existing conditions– both barriers and opportunities
- Description of how the info was gathered – e.g. community walkability assessment

More Detailed Information

- Parent concerns
- School concerns
- Pick up/drop off procedures
- Pedestrian/bike/car crashes
- Other relevant information

Walk & Bike Barriers & Opportunities



In Need of Improvement: Broken utility box with no cover has created a hazard. (Green)



In Need of Improvement: Missing and faded crosswalks need repainting. (Top Left Red, Top Right Green, Above Red, Middle Right Green, Bottom right Purple)



Map(s) of School Neighborhood

- How routes were chosen
- Details on how/ when the assessment was conducted

Walkability Assessment and Observations:



Wilson Elementary School Crash Victim Crash Victim < 18 years old

Find Your Regional Safe Routes Coordinator

Some counties are split into multiple Transportation Management Association service areas. To find the Regional Safe Routes Coordinator who serves your community, find your county on the map and click to see which Transportation Management Association serves your area.

Contact information for each Transportation Management Association can be found below.



Avenues in Motion
(973) 267-7600
www.avenuesinmotion.org



Cross County Connection
(856) 596-8228
CCCTMA@driveless.com
www.driveless.com



EZ Ride
(201) 939-4242
info@EZRide.org
www.ezride.org



GoHunterdon
(908) 788-5553 ext. 15
info@gohunterdon.org
www.gohunterdon.org



Greater Mercer TMA
(609) 452-1491
tma@gmtma.org
www.gmtma.org



Hudson TMA
(201) 324-6222
info@hudsontma.org
www.hudsontma.org



Keep Middlesex Moving
(732) 745-4465
kmm@kmm.org
www.kmm.org



RideWise
(908) 704-1011 ext. 11
staff@ridewise.org
www.ridewise.org

Find your SRTS Coordinator

Saferoutesnj.org

An assessment tool for NJ schools

- ❑ Includes school specific questions
- ❑ Includes instructions for mapping school area online
- ❑ Separate assessments for walking and cycling
- ❑ Arbitrary scales replaced by reporting frequencies (always, sometimes, never)

WALK to School Assessment

1. What is the highest speed limit along your route to school?

- ☐ _____ MPH (*miles per hour*)
- ☐ Not posted

2. Did you have a comfortable place to walk?

Circle One: **Always** **Sometimes** **Never**

Check any problems you observed:

- ☐ Sidewalks or paths started and stopped
- ☐ Sidewalks were broken or cracked
- ☐ Sidewalks were blocked with parked cars, signs, shrubs, dumpsters, etc.
- ☐ No sidewalk, paths, shoulders
- ☐ Too much traffic
- ☐ Other: _____

Location of problems: _____

3. Did you feel safe crossing streets?

Circle One: **Always** **Sometimes** **Never**

Check any problems you observed:

- ☐ Crosswalks not clearly marked
- ☐ There were no signals to help me cross
- ☐ There were no sidewalk ramps at intersections
- ☐ Oncoming motor vehicles difficult to see
- ☐ There were too many motor vehicles
- ☐ I had to cross a street with more than four lanes
- ☐ Other: _____

Location of problems: _____

4. Were there crossing guards to help you cross streets? (Check all that apply)

- ☐ No
- ☐ Yes, in the morning
- ☐ Yes, in the afternoon
- ☐ Yes, but not where I wanted to cross

Tips for Assessment

□ Gather a group

- Work with partners to recruit volunteers and students

□ Be Prepared

- Have good info/instructions
- Prepare an Intro/Training
 - Identify roles/responsibilities
 - Identify what to look for
 - Demonstrate how to take pictures
- Plan and map the route
- Be familiar with the area
- Bring supplies to complete the assessment



Tips for Assessment

- ❑ **Listen**
 - ❑ Everyone's input is important
- ❑ **Have a back-up plan**
 - ❑ Know what you can finish later if you get cut short
- ❑ **Conduct a group debrief**
 - ❑ Discuss conditions – good and bad
 - ❑ Discuss potential improvements
 - ❑ Develop a list of priorities



Taking Effective Pictures

- ❑ Take many pictures!
- ❑ Avoid closeups – make sure the scope of the problem can be seen and the issue can be easily identified
- ❑ Try to add some scale to your pictures
- ❑ Have a photographer work with a notetaker – record where each picture is being taken



Check Out the Video!



<http://www.saferoutesnj.org/videos/>

Required – Goals & Actions

Required Information	More Detailed Information
<ul style="list-style-type: none">• Address infrastructure and non-infrastructure• List of goals – community driven• Priorities• Action items• Responsibilities	<ul style="list-style-type: none">• Timeline• Resources

School Travel Plan: Education

Education			
Action	Responsibility	Time Frame	Cost
Educate students, family members, bus drivers and school employees about drop-off/ pick up zones. Make sure everyone knows the best way to keep students safe and to quickly dismiss students from school.	School, Trenton School District	Short Term	Low
Increase community outreach about the health benefits of walking and biking to school.	School, PTO	Short Term	Low
Conduct community wide outreach about Safe Routes to School actions such as education about walking and biking safety.	School, GMTMA	Short Term/ Ongoing	Low
Educate community and responsible parties about snow removal on main thoroughfares to school.	City Public Works	Short Term/ Ongoing	Low
Speak with community and public works about the importance of keeping up with outdoor maintenance. It becomes a safety issue if not conducted regularly.	City Public Works, Community Groups	Long Term/ Ongoing	Low
Involve the community in a discussion about how to create a "sense of safety in the neighborhood." Work with the community to develop and implement discussion outcomes.	Community Groups, School	Long Term	Low



School Travel Plan: Encouragement

Encouragement			
Action	Responsibility	Time Frame	Cost
Establish main walking routes, safety corridors, walking school buses – safety in numbers. Map and distribute to the school community in welcome back to school mail prior to the start of the school year.	School, PTO, GMTMA, Community Groups	Ongoing	Low
Participate in an active Safe Routes to School program including not only education, but events to encourage students to walk and/or bike to school. Examples include Golden Sneaker Award, Walking Wednesday, Walking School Bus and other innovative events to encourage safe walking and bicycling.	School, PTO, GMTMA, Community Groups	Ongoing	Low
Conduct a bicycle rodeo to encourage safe bicycling to school. This could include stations about bicycle safety, helmet and bicycle fit, rules of the road, handling skills, and numerous other safety topics	PTO, School, Police, Community Groups, GMTMA	Short Term	Low
Conduct a community clean-up day focusing on routes to school to encourage parents, students, and other community members to improve their neighborhood and come together to support their children. Encourage community to place trash in garbage cans and/or areas that will not block the sidewalks on trash collection days.	PTO, School, Police, Community Groups, GMTMA	Short Term	Low
Encourage community to take action against crime and gang activity in the park- where students could be playing outside. Discourage drug activity near corner Bodega where students frequent.	Police, Community Groups	Ongoing	Low



School Travel Plan: Engineering

Engineering			
Action	Responsibility	Time Frame	Cost
Define and enhance school zone. Need additional and replacement signage for speed limit, crosswalks, school zone and advance school zone warning signs.	City Public Works, Trenton School District	Short Term	Low
Increase the number of crosswalks and fix current crosswalks including pavement stripes, signage, ADA accessibility, flashing crosswalk signs and push to walk buttons and pedestrian signals.	City Public Works	Short/ Long Term	Medium
Assess all sidewalks.	City Public Works, School, PTO, Community groups, GMTMA	Short Term	Low
Fix or replace all sidewalks that are not in are in good condition. This includes fixing broken and replacing missing sidewalks, cutting down overgrown foliage that blocks sidewalk or creates dangerous blind spots, making sidewalks ADA accessible.	City public Works	Mid-Term	Medium
Fix flooding issues that may include but are not limited to removing mud and trash from sewer grates.	City Public Works	Short Term	Low



Required – Program Evaluation & Monitoring

Required Information	More Detailed Information
<ul style="list-style-type: none">• Task force timeline and next steps	<ul style="list-style-type: none">• Evaluation timeline• Periodic Walk & Bike Assessments• Community Engagement

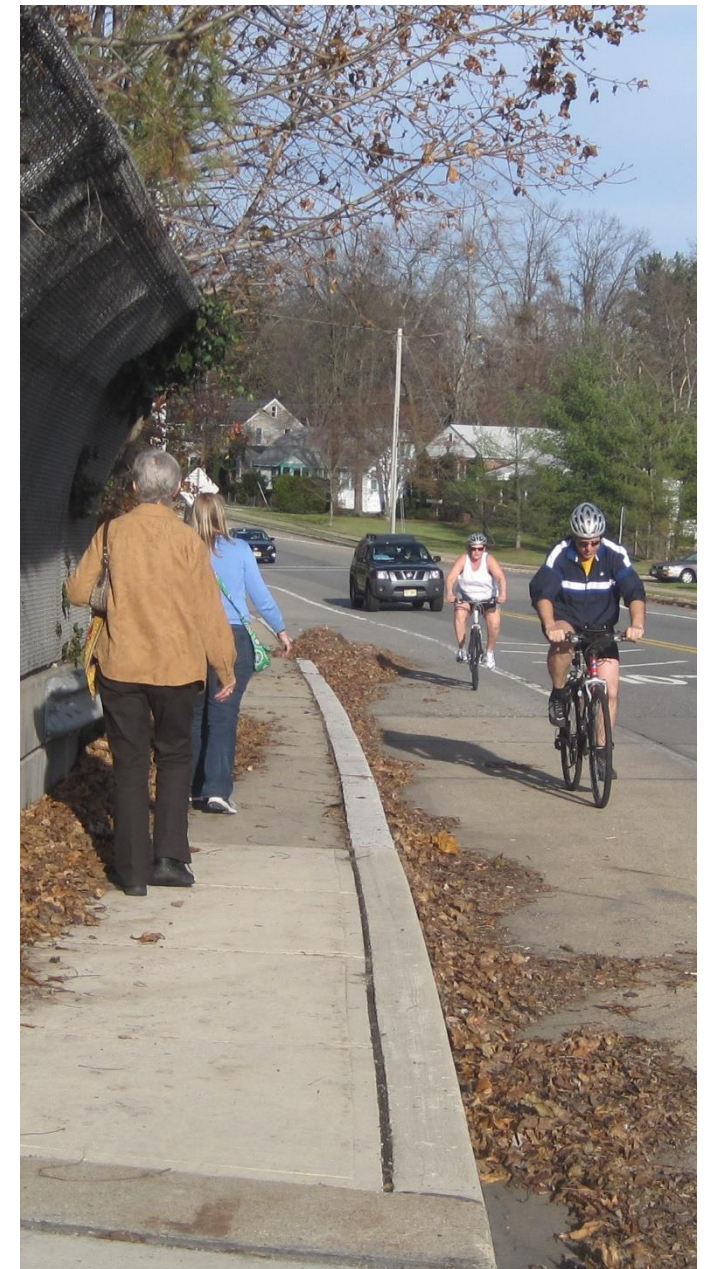
School Travel Plan: Evaluation

Evaluation			
Action	Responsibility	Time Frame	Cost
Conduct periodic mode choice surveys (number and percentage of students who walk or bicycle to school) to better understand any changing travel patterns and to target and assess future efforts.	School, PTO GMTMA	Short Term/ Ongoing	Low



Keys to a great School Travel Plan

- ❑ Don't assume – use accurate information.
- ❑ Mapping is critical to show the full scope of the issues.
- ❑ Be visual – include pictures of good and bad conditions.
- ❑ A School Travel Plan is not simply an inventory – you need to identify barriers and brainstorm solutions.
- ❑ Prioritize solutions that can make the most difference, both long-term and short-term.



NJ SAFE ROUTES RESOURCE CENTER: SCHOOL TRAVEL PLAN WEBSITE

<http://www.saferoutesnj.org>

School Travel Plan Resources and Guidelines:

- School Travel Plan Checklist
- School Description
- Working Groups & Partnerships
- Walk/Bike Assessments
- Mapping Tools
- Walk/Bike Barriers and Opportunities
- Goals and Actions
- Evaluation



NJDOT Design Guides

- Complete Streets Design Guide
- School Zone Design Guide
- School Bike Parking Guide
- Complete & Green Streets for All: Model Complete Streets Policy & Guide
- Planning for Greenways Guidebook

<https://www.saferoutesnj.org/guides/>



Find Your Regional Safe Routes Coordinator

Some counties are split into multiple Transportation Management Association service areas. To find the Regional Safe Routes Coordinator who serves your community, find your county on the map and click to see which Transportation Management Association serves your area.

Contact information for each Transportation Management Association can be found below.



Avenues in Motion
(973) 267-7600
www.avenuesinmotion.org



Cross County Connection
(856) 596-8228
CCCTMA@driveless.com
www.driveless.com



EZ Ride
(201) 939-4242
info@EZRide.org
www.ezride.org



GoHunterdon
(908) 788-5553 ext. 15
info@gohunterdon.org
www.gohunterdon.org



Greater Mercer TMA
(609) 452-1491
tma@gmtma.org
www.gmtma.org



Hudson TMA
(201) 324-6222
info@hudsontma.org
www.hudsontma.org



Keep Middlesex Moving
(732) 745-4465
kmm@kmm.org
www.kmm.org

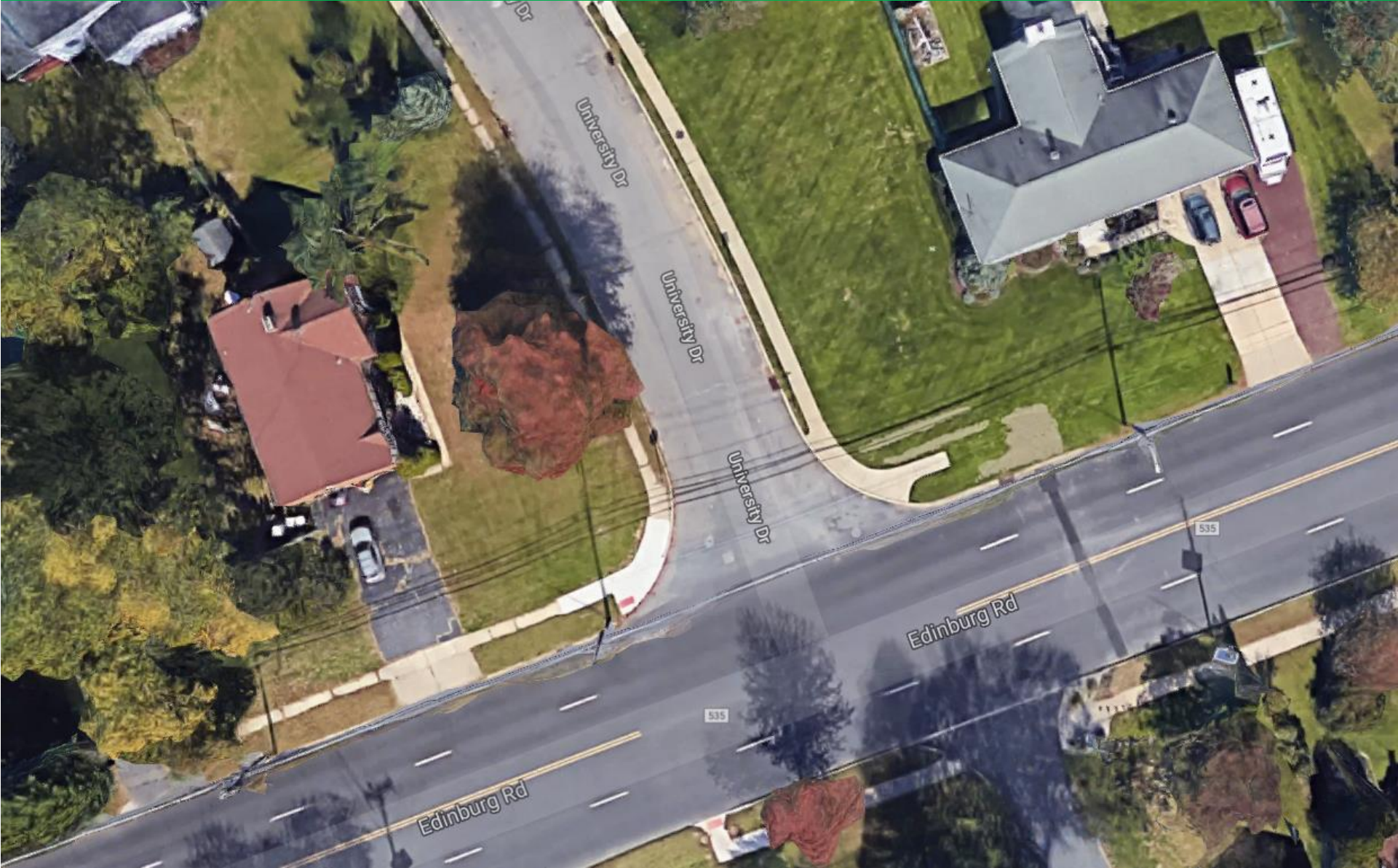


RideWise
(908) 704-1011 ext. 11
staff@ridewise.org
www.ridewise.org

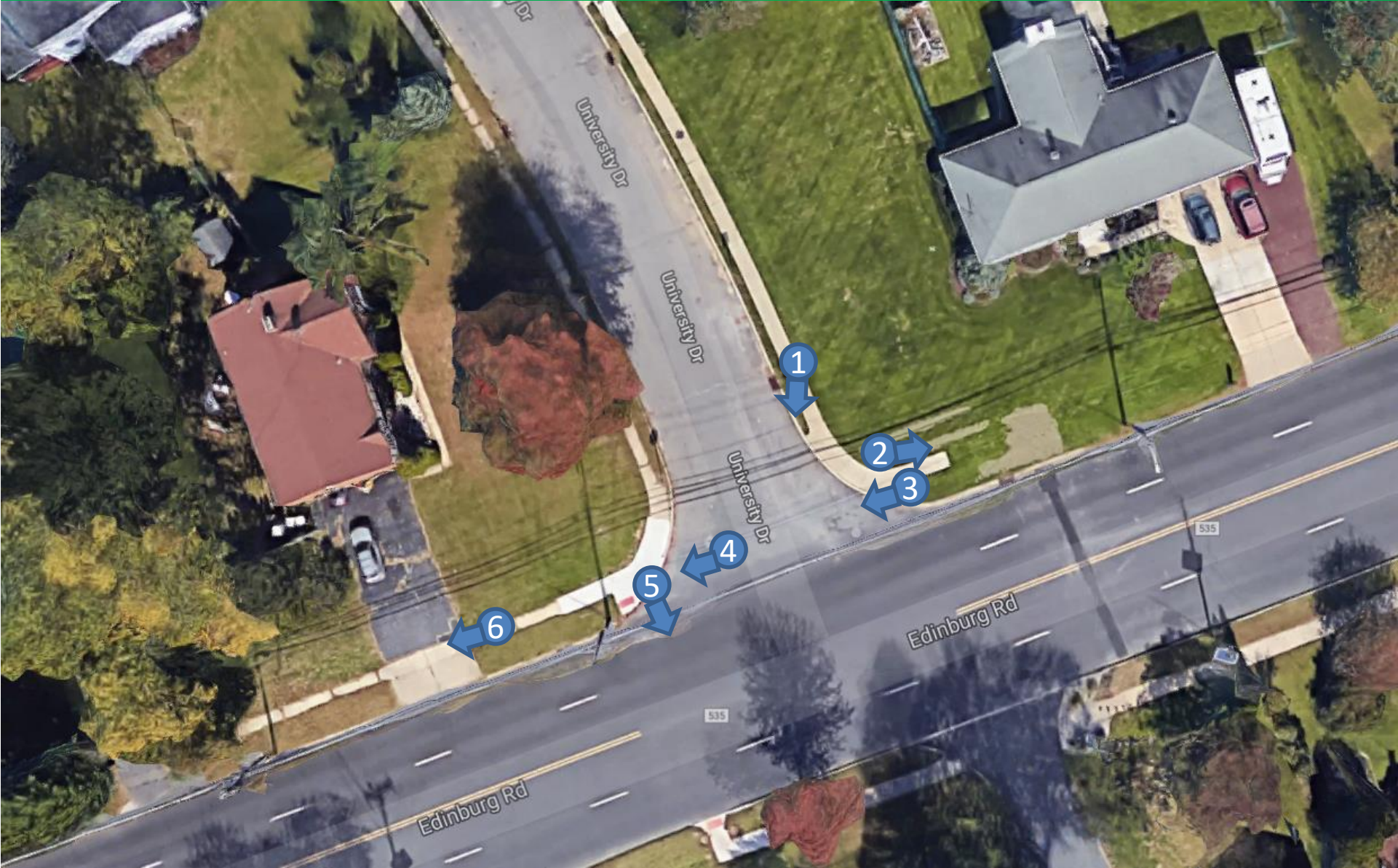
Find your SRTS Coordinator

Saferoutesnj.org

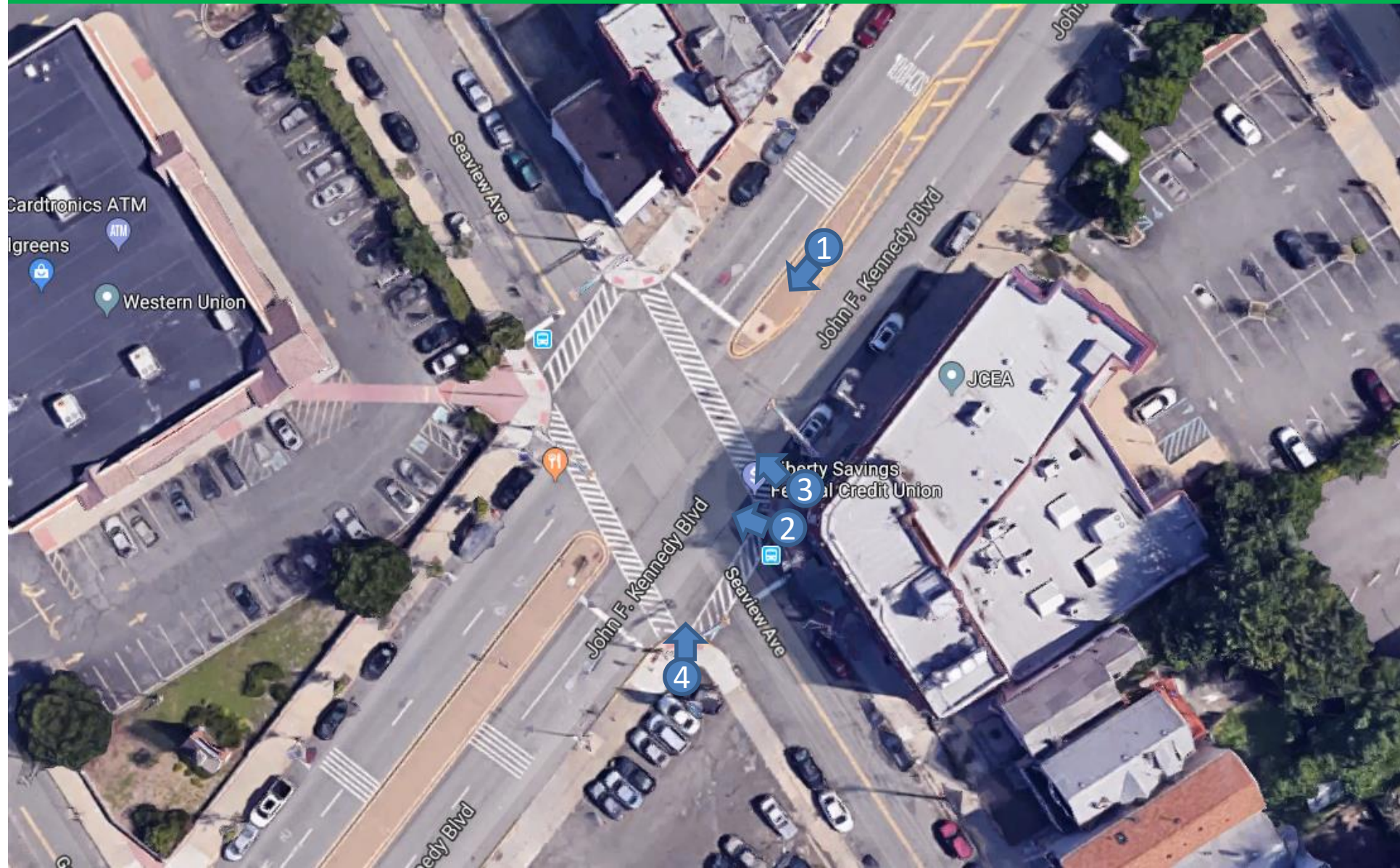
University Dr. & Edinburg Rd.



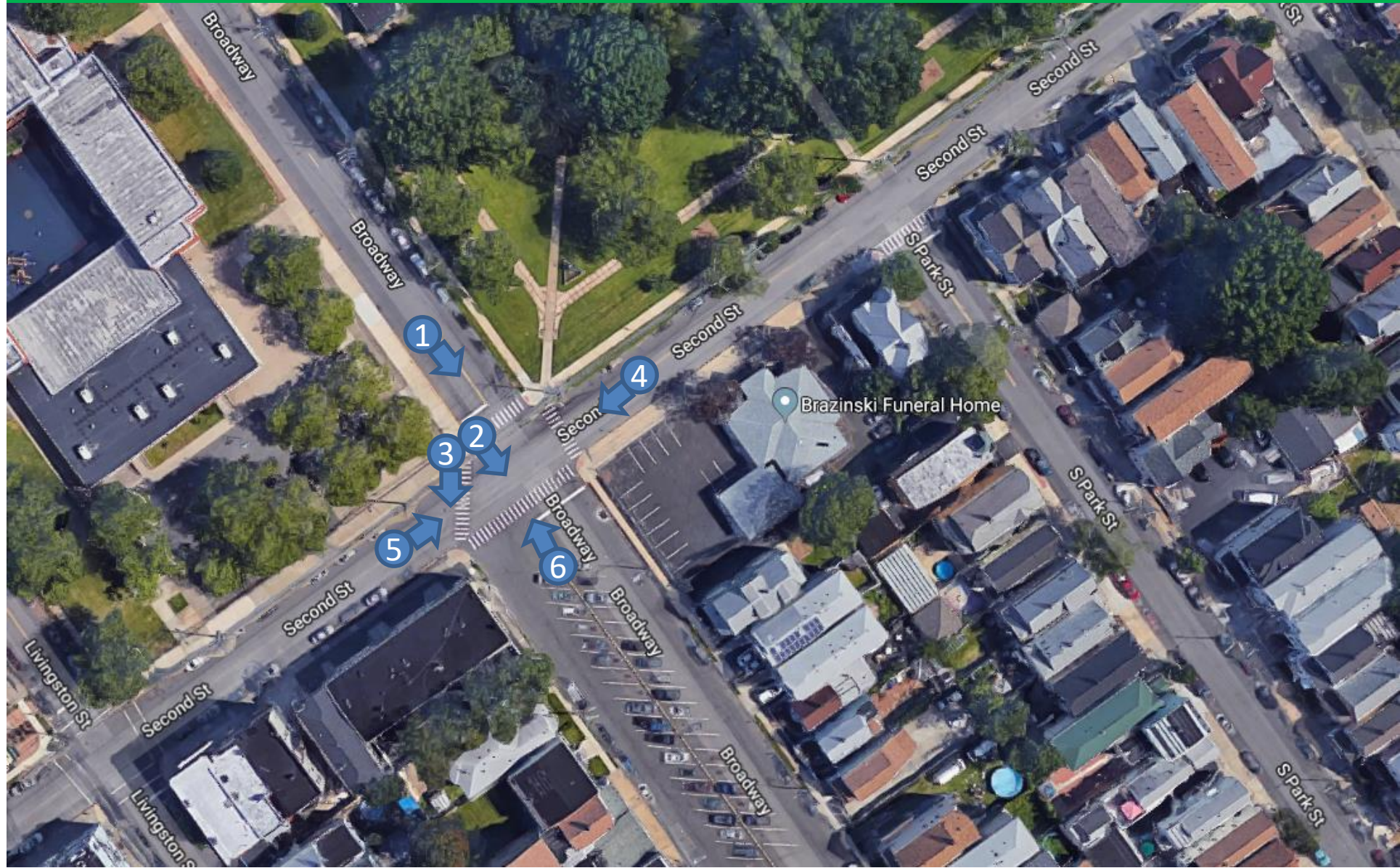
University Dr. & Edinburg Rd.



JFK Blvd. & Seaview Ave.



Broadway & Second St.



Webinar: How to Adopt or Update a Complete and Green Streets Policy

Learn how to create and adopt your own custom municipal Complete & Green Streets Policy. If you already have a policy, learn how to upgrade with the NJ Model Policy. This free one-hour webinar for municipal officials, staff, or consultant representatives is sponsored by the NJDOT Bureau of Safety, Bicycle and Pedestrian Programs and the North Jersey Transportation Planning Authority and organized by Sustainable Jersey.

- Tuesday, September 17, 2024, noon to 1:00pm
- Follow-up Open House Q&A for attendees to be held virtually on Wednesday, October 30, 2024 from 3:00-5:00pm



<https://go.rutgers.edu/CSPolicy>

Thank You!



Contact:

NJ Safe Routes Resource Center

saferoutesnj.org

Telephone: (848) 932-7901

Email: srts@ejb.rutgers.edu

NEW JERSEY
Safe Routes to School



www.saferoutesnj.org

