

SafeRoutes



Academy

Saferoutesnj.org



Bring Your Questions! How to Engage Your Community to Build Better Streets



William Riviere

Principal Planner and State Safe Routes to School Coordinator, NJDOT



Candace Faust

Eatontown Borough Council



Krista Weaver

Borough of Hopewell Council



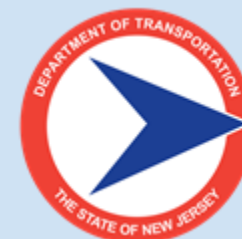
Sean Meehan

Alan M. Voorhees Transportation Center, Rutgers University



Gabrielle Bennet-Meany

Belleville School Board President and Coordinator of the Belleville Green Team



How to Engage Your Community to Build Better Streets



Photo Credit: Mayor Ryan Kennedy



2022 Speed Study by GMTMA

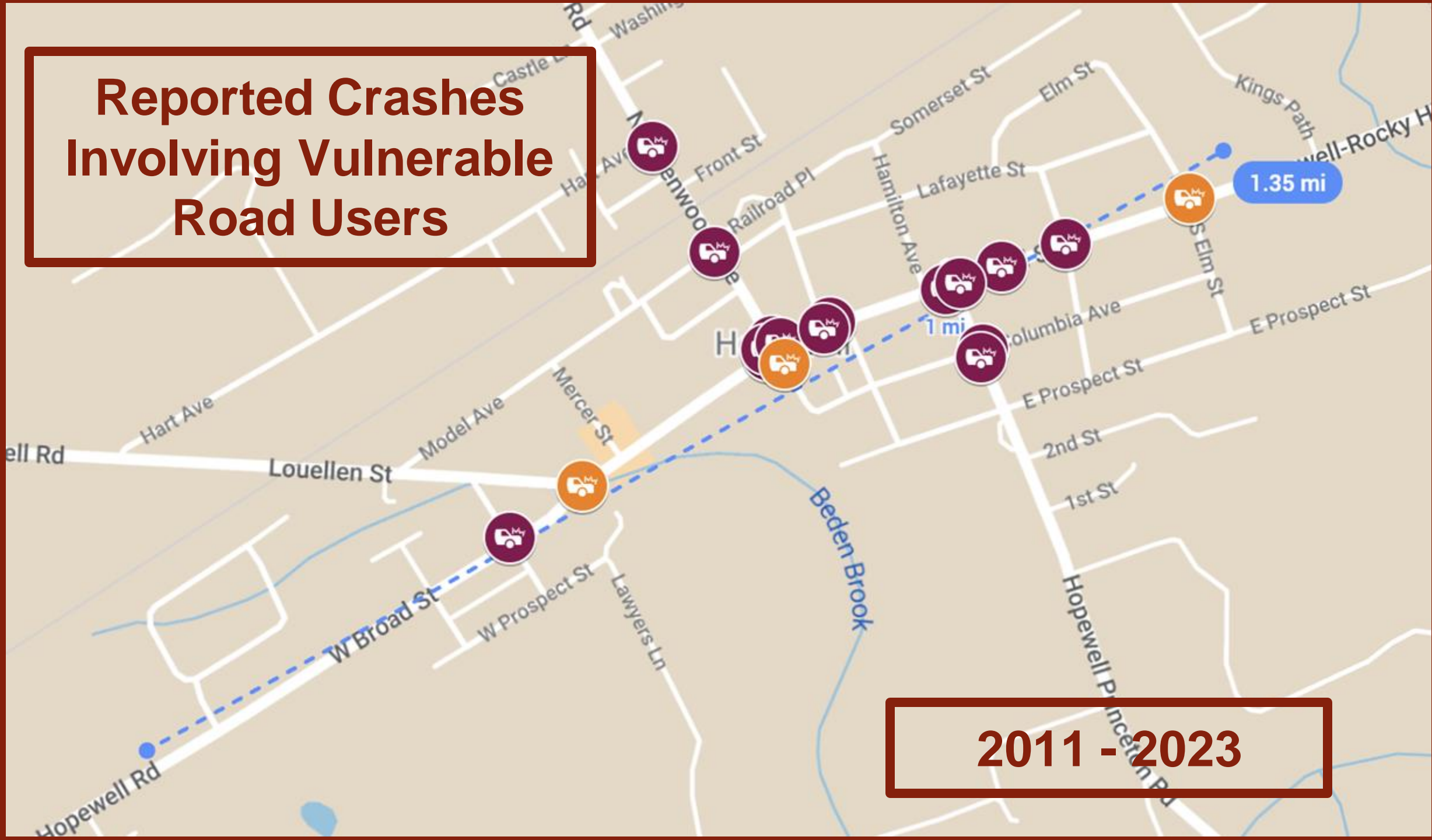
Table 4: Percent of Vehicles Traveling Over the Speed Limit (Weekdays Only, Only Vehicles Traveling Above 16 MPH)

<i>Location</i>	<i>Street</i>	<i>% Speeders</i>		<i>% High Speeders</i>		<i>% Change in Percentage of Speeders</i>	<i>% Change in Percentage of High Speeders</i>
		<i>Off</i>	<i>On</i>	<i>Off</i>	<i>On</i>		
Location 1	E Broad St	32%	33%	6%	7%	2% Increase	2% Increase
Location 2	W Broad St	72%	64%	36%	32%	11% Decrease	6% Decrease
Location 3	Louellen St	95%	91%	84%	72%	5% Decrease	14% Decrease

Table 5: 85% Speed, Average Speed, and Max Recorded Speed (Weekdays Only, All Data)

<i>Location</i>	<i>Street</i>	<i>85% Speed</i>		<i>Average Speed</i>		<i>Max Recorded Speed</i>
		<i>Off</i>	<i>On</i>	<i>Off</i>	<i>On</i>	
Location 1	E Broad St	34	34	30	30	70 MPH
Location 2	W Broad St	41	41	34	34	81 MPH
Location 3	Louellen St	47	45	41	39	76 MPH

Reported Crashes Involving Vulnerable Road Users



2011 - 2023

Signage for Safer Streets

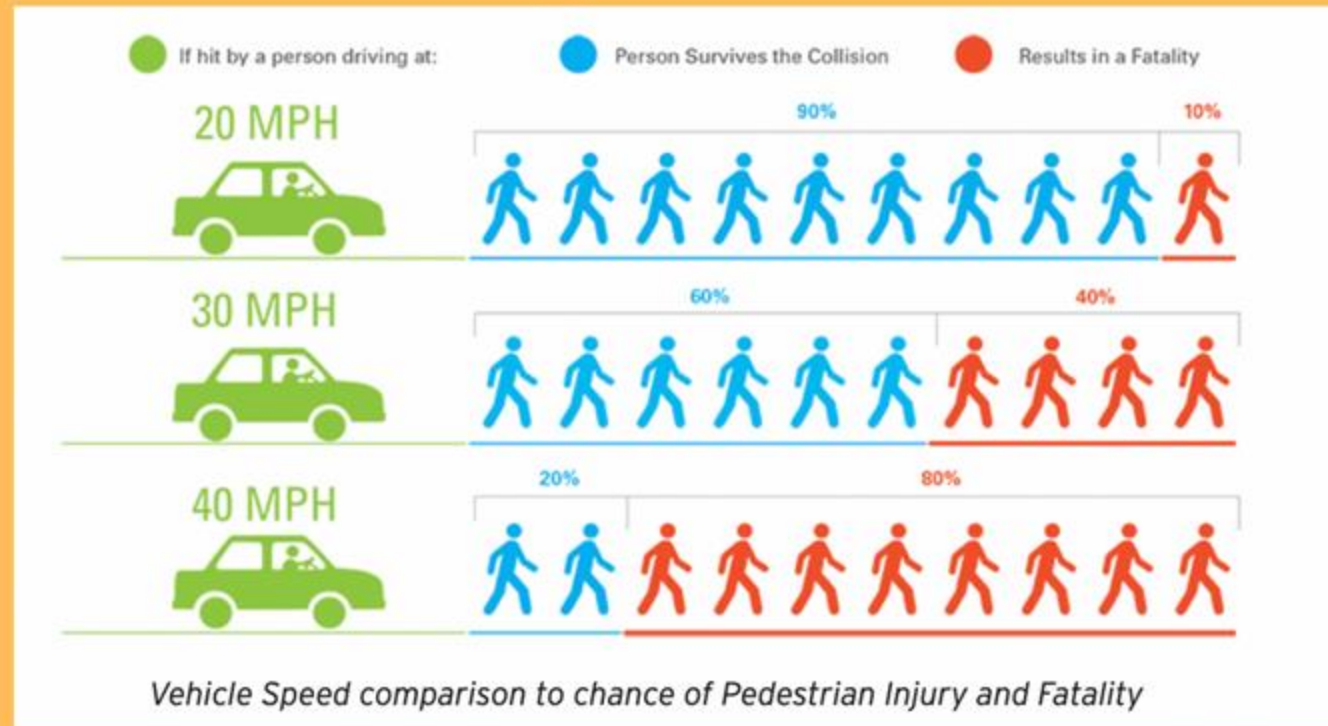


Photo credit: Mayor Ryan Kennedy



Education

The speed limit has been lowered to 25 mph for the entirety of Broad Street.



Data source: US Department of Transportation, Literature Reviewed on Vehicle Travel Speeds and Pedestrian Injuries, March 2000.
Image credit: San Francisco MTA Vision Zero Action Plan, February 2015: <https://view.joomag.com/vision-zero-san-francisco/0685197001423594455?short>

SLOWER SPEEDS SAVE LIVES

Education

INCREASED ENFORCEMENT
COMING SOON!



DRIVE 25

DRIVE SMART
We slow down
for safety



Hopewell Street Smart Survey

NO
TURN
ON
RED



SPEED
LIMIT
25



Test your Street Smart knowledge!
Take the survey on NJ motor vehicle laws
for a chance to win a \$100 gift card!

Hopewell Borough
ENJOY TOWN
SLOW DOWN



Let's Walk
and Ride!



**WALK, BIKE & ROLL
TO SCHOOL DAY**

HOPEWELL ELEMENTARY SCHOOL

Join the festivities as Hopewell Township
Police Department, Greater Mercer TMA,
and Hopewell ES staff celebrate Walk, Bike,
and Roll to School Day!

- Make sure to visit GMTMA's Quiz Wheel at the basketball court for prizes
- Enter to WIN Lunch with our hometown heroes & helpers!

DETAILS:

- Join your route at the designated times
- All routes meet up at the Train Station at 8am
- Walk, Bike, or Roll to school parade style!
- Follow all directions given by the Police and Parent Volunteers
- Walk, Bike, and Roll Safely!
- HAVE FUN!



www.gmtma.org 609-452-1491

Working with Other Agencies and Municipalities



Photo credit: Andrew Harrison, Hopewell Valley News

Changing the speed limit and increasing enforcement lowered the average speed on Broad Street.

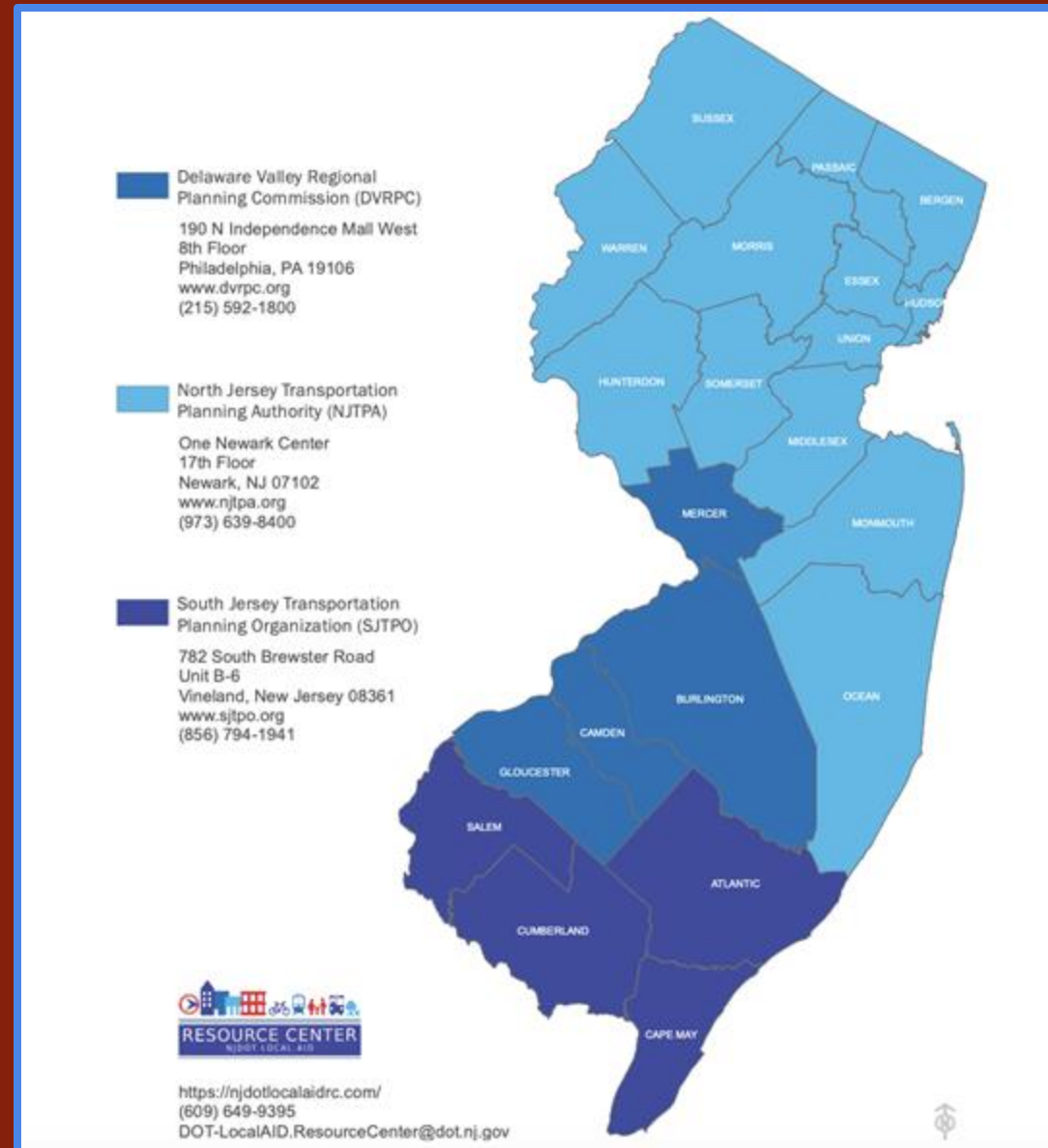


*The transitional speed approaching West Broad Street was lowered from 45 mph to 35 mph, which may account for the greater reduction in speed on that end of the study area.

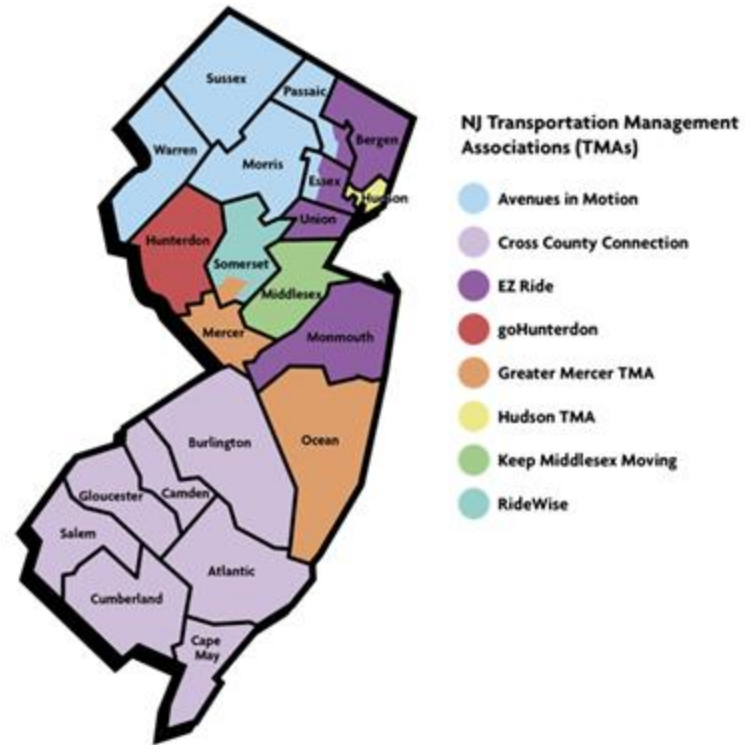
The Delaware Valley Regional Planning Commission's Demonstration Project for Hopewell Borough



Map of Metropolitan Planning Organizations (MPOs)



Map of Transportation Management Associations (TMAs)



AVENUES IN MOTION

Morris, Sussex, Warren, and western portions of Passaic and Essex Counties
973-267-7600

CROSS COUNTY CONNECTION

Atlantic, Burlington, Camden, Cape May, Cumberland, Gloucester, and Salem counties.
856-596-8228

EZ RIDE

Bergen, Union, Essex, and Monmouth Counties, eastern portions of Passaic County
201-979-4242
toll free: 866-208-1307

GOHUNTERDON

Hunterdon County
908-788-5553

GREATER MERCER TMA

Mercer and Ocean County, and Montgomery Township (Somerset County)
609-452-1491

HUDSON TMA

Hudson County
201-324-6222

KEEP MIDDLESEX MOVING

Middlesex County
732-745-4465

RIDEWISE

Somerset County (except for Montgomery Twp.)
908-704-1011

Tips for Success

- Get involved. Go to meetings and become familiar with the issues facing your town.
- Set the tone. Encourage the leadership in your community to adopt Complete Streets and Vision Zero Policies.
- Follow the data – crash reports, traffic and speed studies.
- Establish good relationships with other municipalities and partners.
- Don't be afraid to ask for what you want and remain flexible.
- Take advantage of resources – TMAs, MPOs, Vision Zero, The US DOT's Safe Systems Approach, the FHWA's Proven Safety Countermeasures, MUTCD, NACTO, etc.
- Collect resident feedback, get buy-in.
- Remember this is an incremental process and the work will never be done. Celebrate your wins!

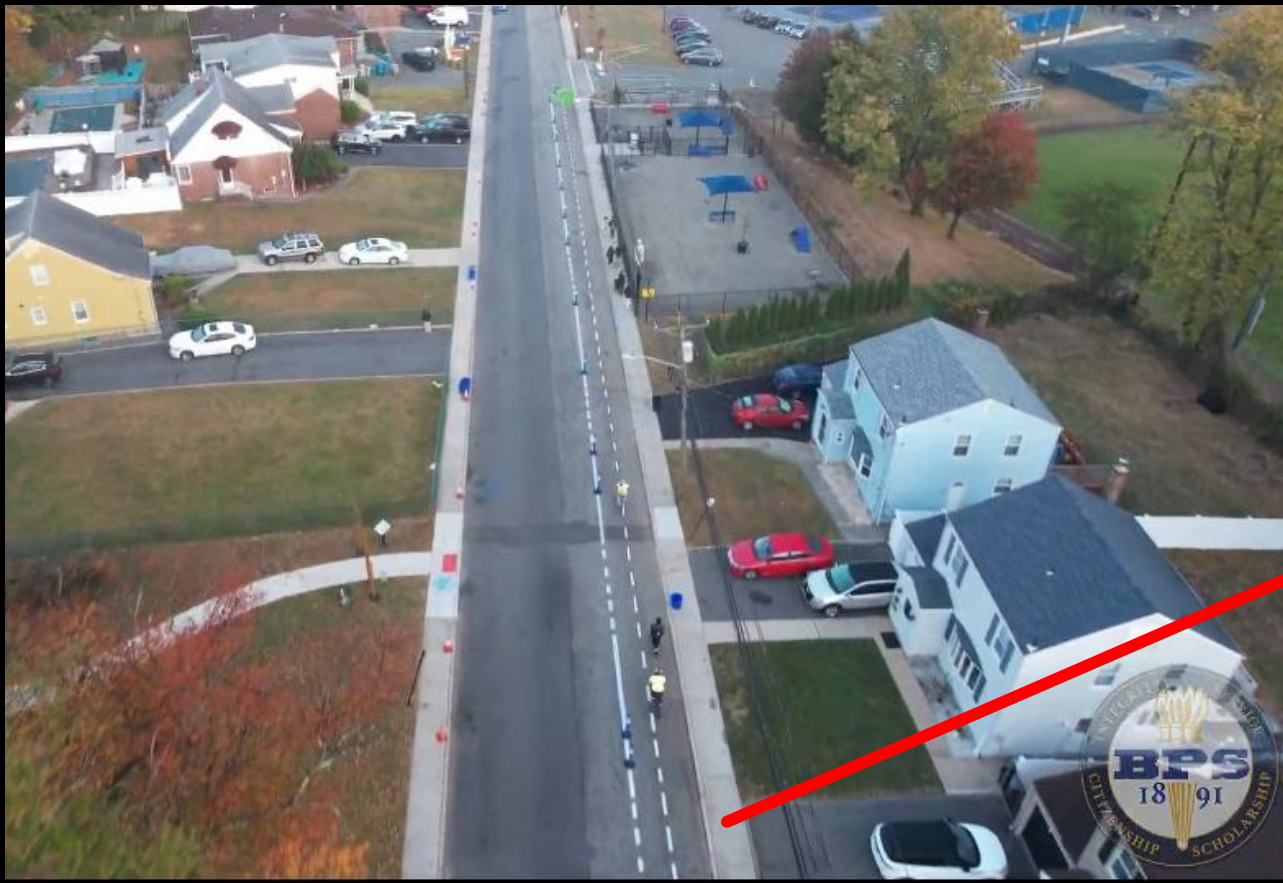
Krista Weaver

Hopewell Borough Council

krista.weaver@hopewellboro-nj.us

Township of Belleville, Essex County, NJ

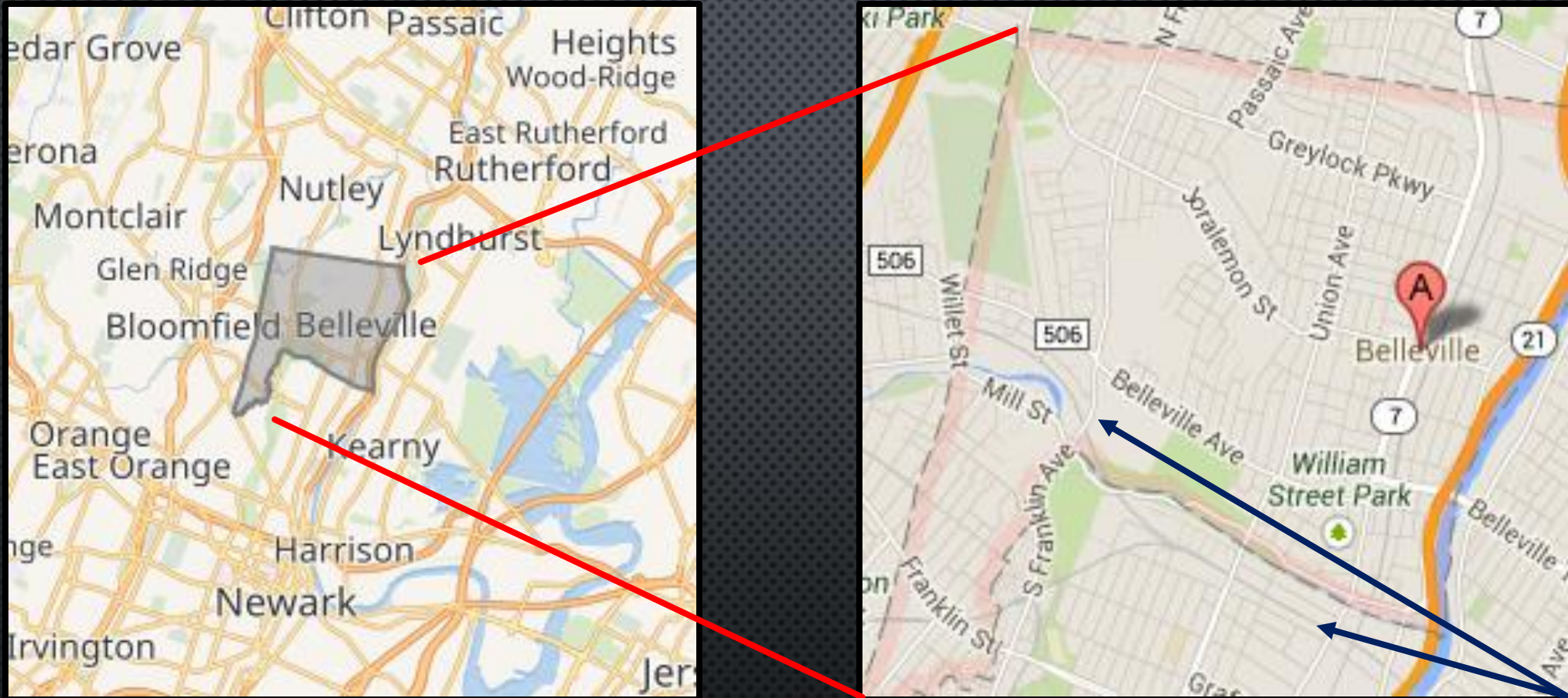
“Division Avenue – POP-UP Bike Lane Demonstration Project”



North Jersey Transportation Planning Authority's (NJTPA) Complete Streets Technical Assistance Program

Sustainable Jersey and the Alan M. Voorhees Transportation Center (VTC) at Rutgers University to provide free technical assistance to municipalities to advance Complete Streets initiatives.

Township of Belleville, Essex County, NJ

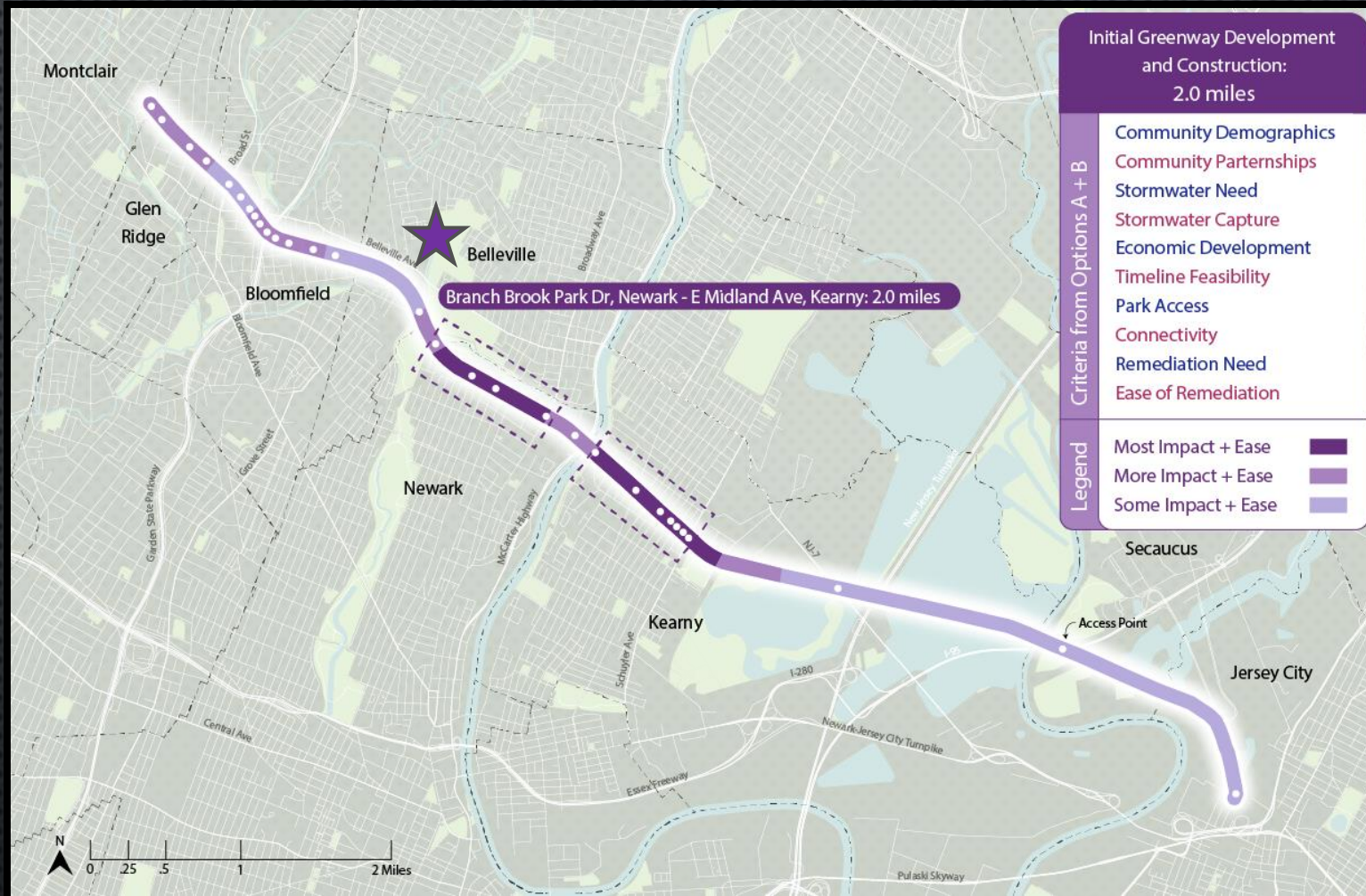


Population estimates, July 1, 2023 = 37,453

The township has a total of 67.17 miles (108.10 km) of roadways, of which 57.22 miles (92.09 km) were maintained by the municipality, 6.21 miles (9.99 km) by Essex County and 3.74 miles (6.02 km) by the New Jersey Department of Transportation

Essex Hudson Greenway

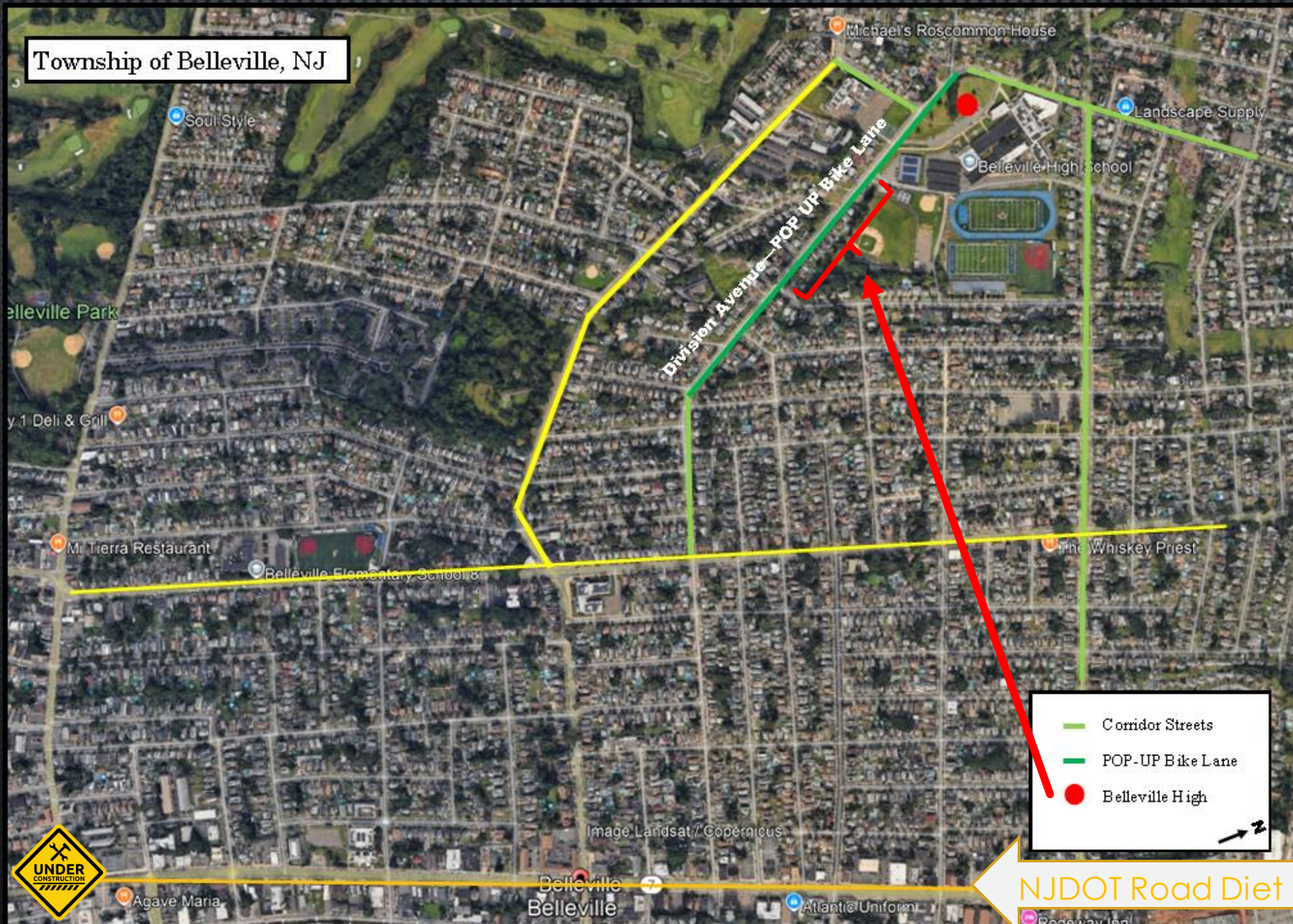
Its coming!



DEP acquired the Greenway from Norfolk Southern on August 19, 2022. It is a nine-mile linear segment through Essex and Hudson Counties – through eight municipalities – Montclair, Glen Ridge, Bloomfield, Belleville, Newark, Kearny, Secaucus, and Jersey City.

The Greenway connects to approximately 1.5 million people – that's over 16% of New Jersey's population.

Township of Belleville, NJ



“Community areas are important for events because they bring people together, build relationships, and foster a sense of community pride!”

High School grades 9-12

High School Sports

Summer Camp

Graduation

Fourth of July

Pumpkin Patch

Food Truck Festival

Summer Concerts

Farmers Market

Green Fair

Health and Wellness Fair

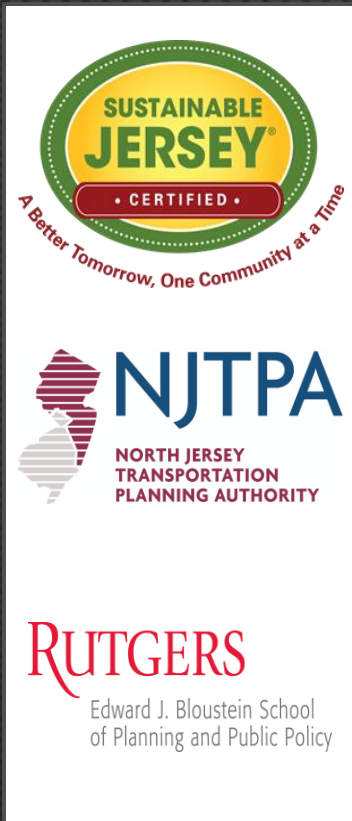
Multicultural Event

Holiday Events and Tree Lighting

and many many many more...

“Community Bike Ride!!!”





Brian Banda, Township Manager
 Dr. Richard Tomko, Superintendent
 Matthew Paladino, Business Administrator
 Captain Frank Pignataro, Belleville Police Dept.
 Operations Bureau
 Robert Welter, Supervisor DPW
 Jerry Topetta, BOE Maintenance Supervisor
 Gabrielle Bennett-Meany, Green Team
 Coordinator/ BOE President
 Lisa Lee and Erlea Maldonado, EZ Ride
 CSTAteam: Keith Hamas (NJTPA), Leigh Ann
 Von Hagen (VTC), James Sinclair (VTC),
 Samuel Rosenthal (VTC) and Anne Heasley (SJ)

Belleville Complete Streets Temporary Demonstration Project Area

Belleville School District and Municipality



Improve bike access to Belleville High School
Educate community on safe bicycle design
Build local capacity

What's the Problem???

- Busy Two Way Street
- Faded crosswalks or no crosswalks
- Roads cracked or patched
- Sidewalks cracked or upheaved
- Narrow Sidewalks
- No "school zone" signs present
- Objects in the way
- Garbage in the way
- Overgrown Vegetation
- Poor driver behavior
- Poor pedestrian behavior

What Are the Issues That Influence Walking or Biking?



The CSTA team visits the project site to observe ways that pedestrians, bicyclists, and motorists behave on the defined project street, the team will develop a profile of the area using local knowledge and existing data such as...

Crash data

Speed limits and measured driving speeds

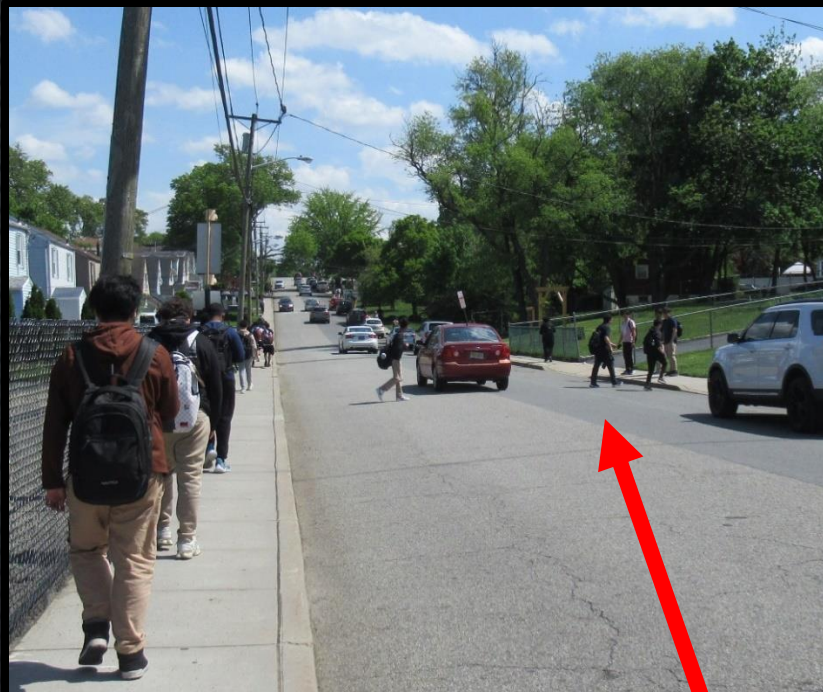
Traffic volumes

Conflict points

Belleville will assist the CSTA Team by providing previously collected data and studies, traffic and speed data, safe routes to school tallies, parking analysis and any other relevant data that can help inform the project team.

The team will take photos and measurements and meet with local representatives to discuss opportunities and challenges.

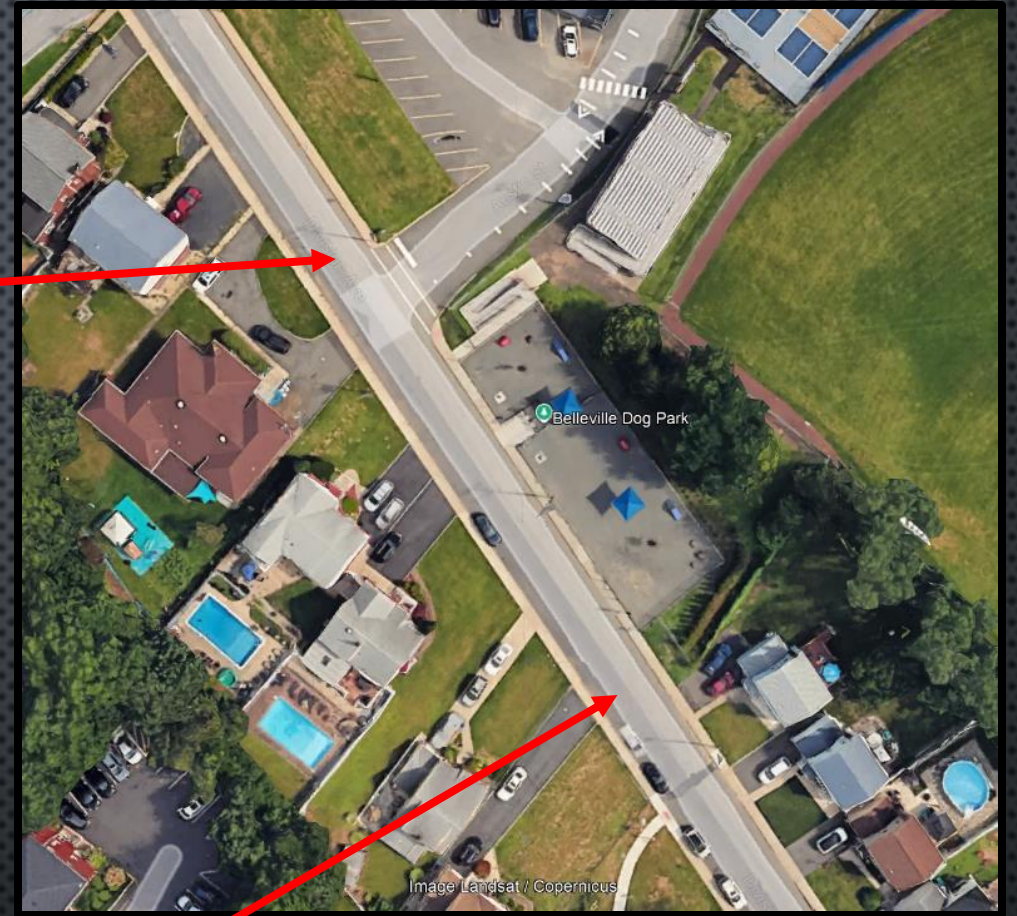
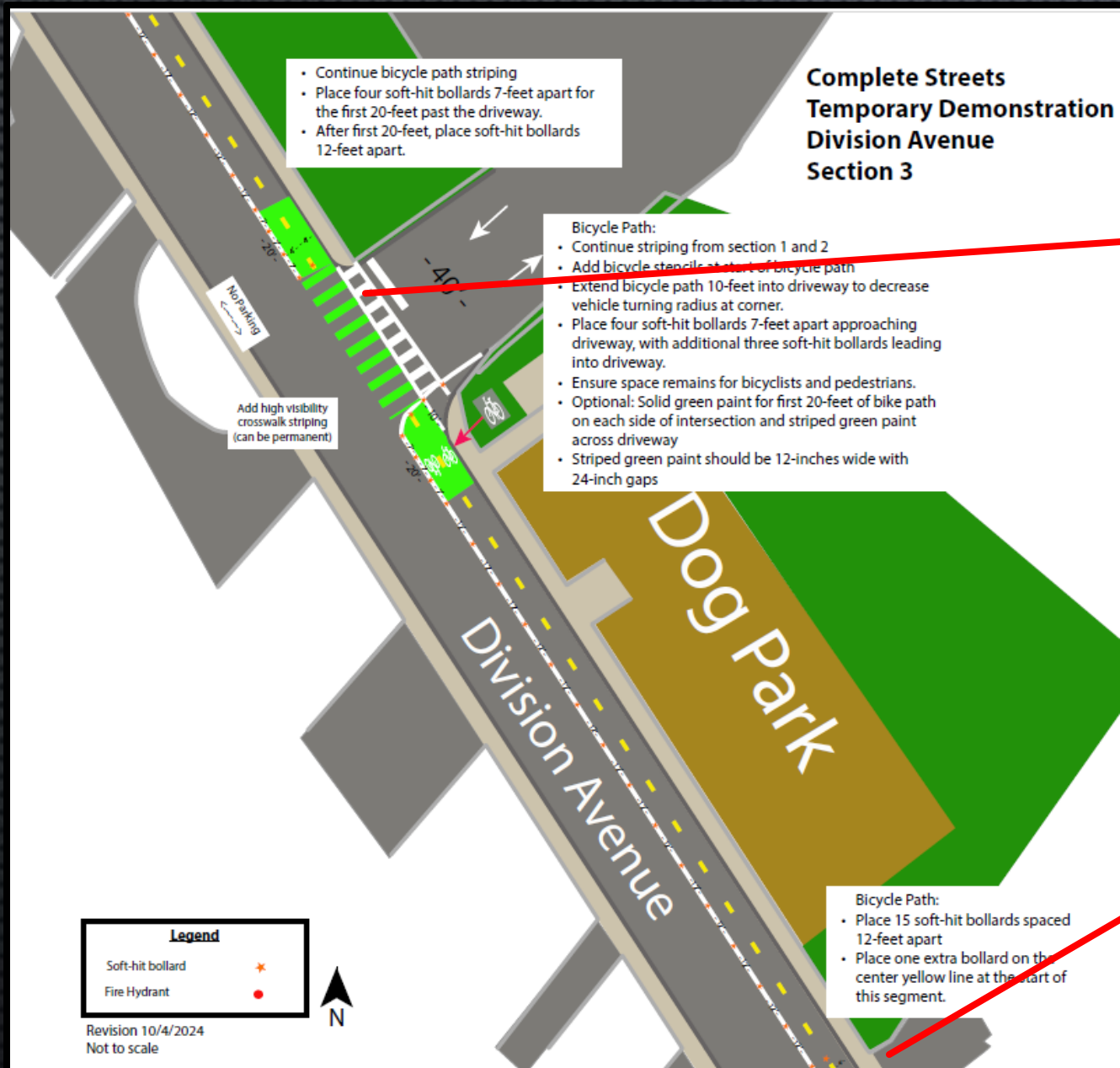
Observations



Crossing in the middle of the street



Riding on the wrong side of the street



Concept and Design
Bike Lane Standards
Conditions and Demonstration

Demonstration projects are short-term, low-cost, temporary projects.

DIVISION AVENUE BICYCLE PATH DEMONSTRATION

Starting October 24, 2024

Belleville wants your input on making Division Avenue safer!

Belleville Township is working on making it safer to walk and bicycle to Belleville High School. The Township will be showcasing a temporary bicycle path from October 24 to November 1 and wants to know what YOU think!

What is a Temporary Demonstration Project?

A Temporary Demonstration Project is a low-cost way to test out new street designs and get community input before investing in permanent changes. It allows residents and students to see and use the temporary infrastructure instead of relying only on concept images or descriptions.

What will Belleville be testing?

Belleville will be testing a two-way protected bicycle path between Nolton Street and Belleville High School along Division Avenue.

Protected bicycle paths provide a dedicated space for bicyclists to ride, away from motor vehicles and off sidewalks. Separating bicyclists and motor vehicles reduces conflicts that can arise due to the differences in their travel speeds. Bicycle paths have also been found to reduce motor vehicle speeds, increasing safety for all users. Pedestrians may also feel more comfortable with motor vehicle traffic placed further away from the sidewalk.

I live on Division Avenue. Will access to my home change?

Access in and out of your driveway will be maintained. A temporary no parking restriction will be in place during the demonstration period between Nolton Street and Belleville High School. Residents will be permitted to park overnight in the high school parking lot by the tennis courts.

How will the Township make the changes?

As part of this demonstration, temporary paint and signs will be added to delineate the two-way protected bike lane. In addition, plastic posts will be placed to help drivers understand the new traffic pattern.

How long will the demonstration be in place?

The changes will be in place from Thursday, October 24 to Friday, November 1.

How will success be measured?

The team's evaluation will include speed studies, direct observations, and feedback from residents. An online survey will be conducted once the changes are in place.

Why is this demonstration happening?

Belleville applied to the Complete Streets Technical Assistance program, a partnership of Rutgers-Voorhees Transportation Center, Sustainable Jersey, and the North Jersey Transportation Planning Authority (NJTPA), to develop a Bicycle Network Plan for the high school neighborhood. The plan will identify ideas to improve roadway safety around the school and to encourage students and residents to walk and bicycle to the school campus, instead of driving. Shifting school trips away from motor vehicles can help reduce neighborhood congestion and increase quality of life for residents. The demonstration will help Belleville and the project team learn more about transportation needs in the school neighborhood.



Belleville wants your input on making Division Avenue safer!

Posted Friday, October 25, 2024

Temporary Bicycle Path

A two-way bicycle path, marked with temporary paint and movable plastic posts will be installed on the east side of Division Avenue, between Nolton Street and Belleville High School. Parking is currently permitted only on the west side of Division Avenue. During the demonstration, parking will be temporarily prohibited between Nolton Street and the high school. Residents are invited to use the high school parking lot by the tennis courts for overnight parking.



Related Events

During the demonstration, EZ Ride Transportation Management Association, Belleville High School, and the Township of Belleville will be hosting a Bike to School Day event on October 30. In addition, a Safety Training class will be held at the high school on November 1 for students.

Project Toolkit

Project materials are being provided by the NJTPA Complete Streets Demonstration Library. The NJTPA created the library to help communities interested in trying out bicycle lanes, corner "bump-outs," and other safety, placemaking, and traffic calming features. To learn more, visit njtpa.org/demolib.

Public Input

Once the demonstration is in place, a questionnaire will be made available at <https://go.rutgers.edu/belleville-survey> or by using this QR code.



ezride

Questions?

For questions about this project, contact Brian Banda, Township Manager, at 973-450-3407 and bbanda@bellevillenj.org or Matthew Paladino, Belleville School District, at 973-450-3500 and matthew.paladino@bellevilleschools.org.

Please take the Temporary Project Survey

For questions about this project, contact Brian Banda, Township Manager, at 973-450-3407 and bbanda@bellevillenj.org or Matthew Paladino, Belleville School District, at 973-450-3500 and matthew.paladino@bellevilleschools.org.

View Additional Info

Spanish

DEMOSTRACIÓN DE CARRIL PARA BICICLETAS EN DIVISION AVENUE

A partir del 24 de octubre de 2024

¡Belleville quiere su opinión para hacer que Division Avenue sea un lugar más seguro!

El municipio de Belleville está trabajando para que sea más seguro caminar y andar en bicicleta hasta la escuela secundaria de Belleville. El municipio exhibirá una ciclovía temporal desde el 24 de octubre hasta el 1 de noviembre y quiere saber lo que U piensa!

¿Qué es un proyecto de demostración temporal?

Un proyecto de demostración temporal es una forma económica de probar nuevos diseños de calles y obtener la opinión de la comunidad antes de invertir en cambios permanentes. Permite a los residentes y estudiantes ver y utilizar la infraestructura temporal en lugar de depender únicamente de imágenes o descripciones conceptuales.

¿Qué estará probando Belleville?

Belleville pondrá a prueba un carril bici protegido de doble sentido entre Nolton Street y Belleville High School a lo largo de Division Avenue.

Los carriles bici protegidos brindan un espacio exclusivo para que los ciclistas viajen, lejos de los vehículos motorizados y fuera de las aceras. Separar a los ciclistas de los vehículos motorizados reduce los conflictos que pueden surgir debido a las diferencias en sus velocidades de desplazamiento. También se ha descubierto que los carriles para bicicletas reducen la velocidad de los vehículos motorizados, lo que aumenta la seguridad de todos los usuarios. Los peatones también pueden sentirse más cómodos con el tráfico de vehículos motorizados más alejado de la acera.

Vivo en Division Avenue. ¿Cambiará el acceso a mi casa?

Se mantendrá el acceso para entrar y salir de su entrada. Se aplicará una restricción temporal de estacionamiento durante el período de demostración entre Nolton Street y Belleville High School. Los residentes podrán estacionar durante la noche en el estacionamiento de la escuela secundaria junto a las canchas de tenis.

¿Cómo realizará el Municipio los cambios?

Como parte de esta demostración, se colocarán pinturas y señales temporales para delimitar el carril bici protegido de doble sentido. Además, se colocarán postes de plástico para ayudar a los conductores a comprender el nuevo patrón de tráfico.

¿Cuánto tiempo durará la demostración temporal?

Los cambios entrarán en vigor desde el jueves 24 de octubre hasta el viernes 1 de noviembre.

¿Cómo se evaluará el proyecto?

La evaluación del equipo incluirá estudios de velocidad, observaciones directas y comentarios de los residentes. Se realizará una encuesta en línea una vez que los cambios estén implementados.

¿Por qué se realiza esta demostración temporal?

Belleville solicitó al programa de Complete Streets Technical Assistance, una asociación del Centro de Transporte Rutgers-Voorhees, Sustainable Jersey y la Autoridad de Planificación del Transporte del Norte de Jersey (NJTPA), desarrollar un Plan de red de bicicletas para el vecindario de la escuela secundaria. El plan identificará ideas para mejorar la seguridad vial en los alrededores de la escuela y alentar a los estudiantes y residentes a caminar o ir en bicicleta al campus de la escuela, en lugar de conducir. Reducir los viajes en vehículos motorizados puede ayudar a reducir la congestión del vecindario y aumentar la calidad de vida de los residentes. La demostración ayudará a Belleville y al equipo del proyecto a aprender más sobre las necesidades de transporte en el vecindario escolar.



English



Township of Belleville
New Jersey



Edward J. Bloustein School
of Planning and Public Policy
Rutgers-Voorhees Transportation Center



NJTPA Complete Streets Demonstration Library:

Material collection and catalog of the things you can borrow; but these things are also low cost.

Board of Education and Municipal Responsibilities:

- Provide labors needed for installation.
- Coordinate with the police department to manage roadway closures, as needed, for installation.
- Coordinate involvement in installation

Project Day



Observations during the Demonstration Project!





**Belleville High School & EZ Ride
Bike, E-Bike & E-Scooter Classes**

Belleville High School, 100 Passaic Ave

Hone Your Bike & E-Scooter Skills

Led by the EZ Ride Bike & Ped Team, Belleville High School students will learn and implement safe skills techniques to safely operate on the road.



**FRIDAY, NOVEMBER 1
1:00 PM - 2:30 PM**

Questions?

Lisa Lee
llee@ezride.org

Caleb Rhodes
caleb.rhodes@bellevilleschools.org
973-450-3500

Register & Sign Up
using the QR Code or
at shorturl.at/42IJO



Schedule

- 1:00 - 2:30 pm: Bike/E-Bike Safe Skills
- 1:00 - 2:30 pm: E-Scooter Safe Skills Class

E-Scooter Safe Skills Class:
Proper Helmet Fitting, Pre-Ride Safety Check
Starting, Stopping, Scanning, Signals, Turning,
Bike Handling & Safe Riding Tips

Safe Bike/E-Bike Safe Skills Class:
Proper Helmet Fitting, Pre-Ride Safety Check
Starting, Stopping, Scanning, Signals, Turning,
Bike Handling & Safe Riding Tips

Requirements

- All: Inflate tires before class
- All students must wear a helmet & sneakers
- All students must bring a waiver signed by parent or guardian to participate.

Borderline Bikes – Bill Quick



Borderline Bikes –
Is a mobile fleet with convenience, safety and expertise whenever and wherever you are!



This event provided student engagement through a project that has real meaning. Community projects can be an effective way to engage students and help them develop problem-solving skills. They can also help students connect classroom learning to real-world problems and experiences, and inspire them to take action!



Free Helmets

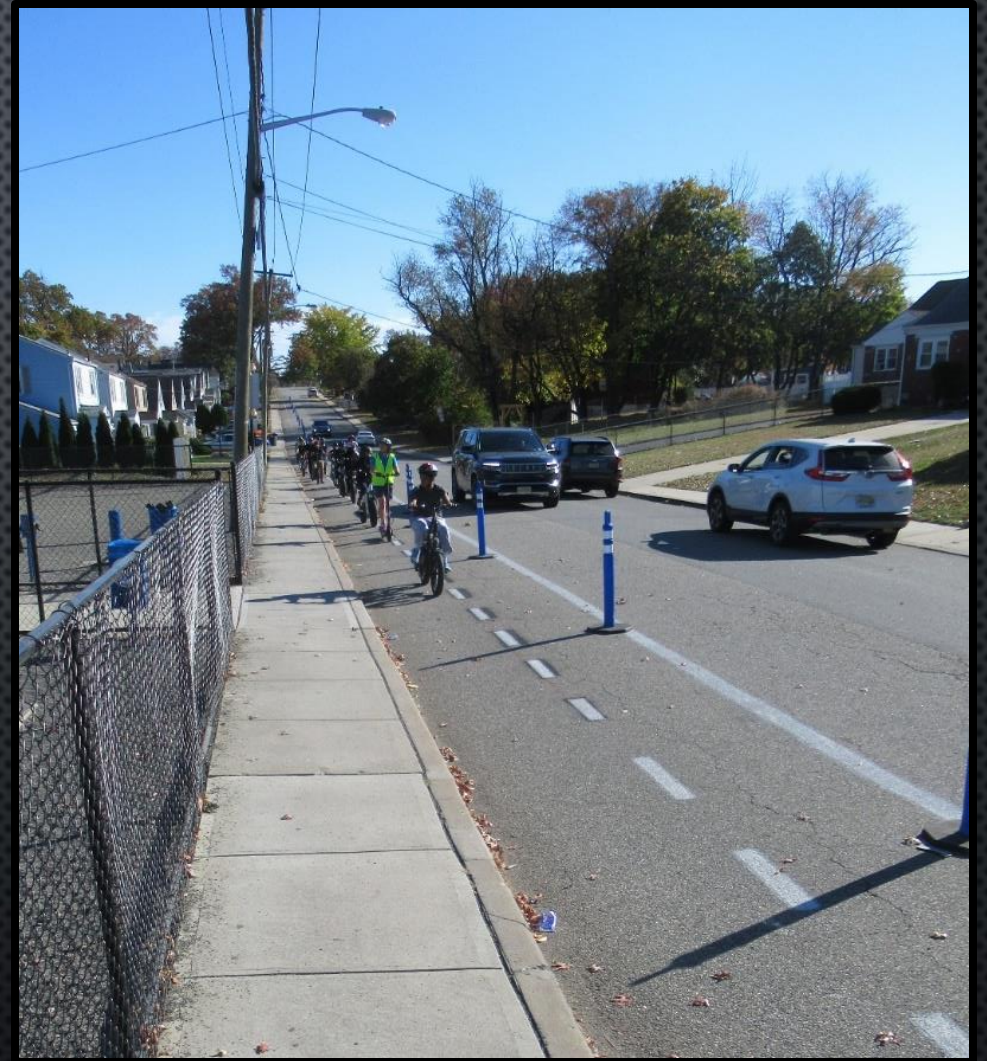


Road Course



Safety Education

Testing the Bike Lane



“POP-UP Bike Lane Project”



Thank You !





Belleville Public Schools & Police Department Safe Routes to School Program

We have demonstrated our commitment to the program by meeting the following criteria for the **SRTS Gold award**:

- Having a SRTS Champion to support the program
- Having two Learn to Ride classes on April 22, 2023
- Having a Bike Rodeo on April 22, 2023
- Having a community ride on April 22, and June 3, 2023
- Participating in Green Fair on September 16, 2023
- Hosting a Learn to Ride on September 16, 2023
- Having two Walk to School with a Cop Days on May 23 and May 24, 2023
- Participated in walkability audit for BPS STP on December 21, 2023
- Passed a Complete Streets Policy
- Ongoing support from the Green Team



Grants

NJTPA Together North Jersey – Vibrant Spaces (Local Technical Assistance) 2021
Improvements to Washington Avenue Commercial District

NJ DOT–Safe Streets to Transit Grant Program 2022
Silver Lake Light Rail Pedestrian Safety Improvements -\$290,000.0

NJ DOT–Safe Streets to Transit 2023
Pedestrian Improvements to Franklin Street -\$446,000.00

NJ DOT- Safe Streets to Transit 2024
Light Rail Pedestrian Improvements -\$187,000.00

★ US DOT- Safe Streets and Roads for All (SS4A) 2023
Roadway Safety Action Plan -\$400,000.00

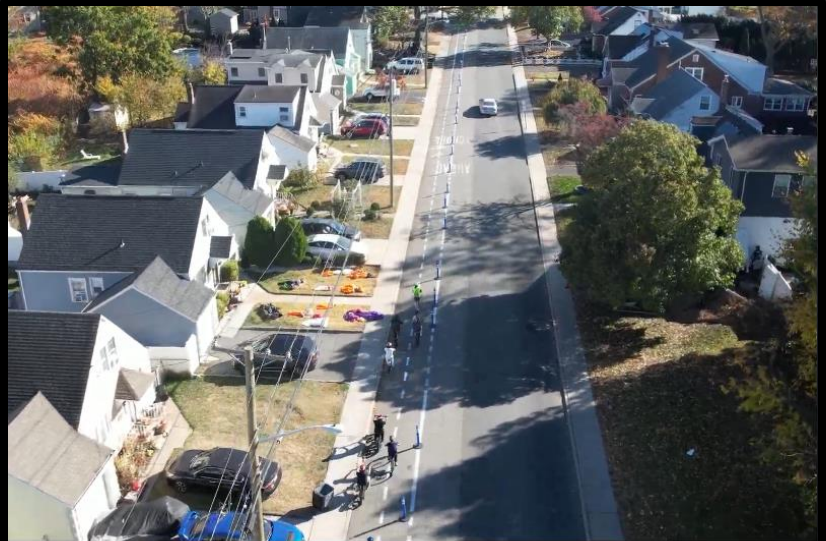
Sustainable Jersey – CSTA Program 2022
Temporary Demonstration Project at MS Intersection -\$10,000.00

NJ DOT- Safe Routes to School Grant 2024
Crosswalk Improvements for Public School Walking Routes -\$962,000.00

NJ DOT– Local Transportation Projects Fund Grant Program
Improvements to Washington Avenue Streetscape -\$1,632,864.00



“Division Avenue – POP-UP Bike Lane Project”





Bring Your Questions! How to Engage Your Community to Build Better Streets

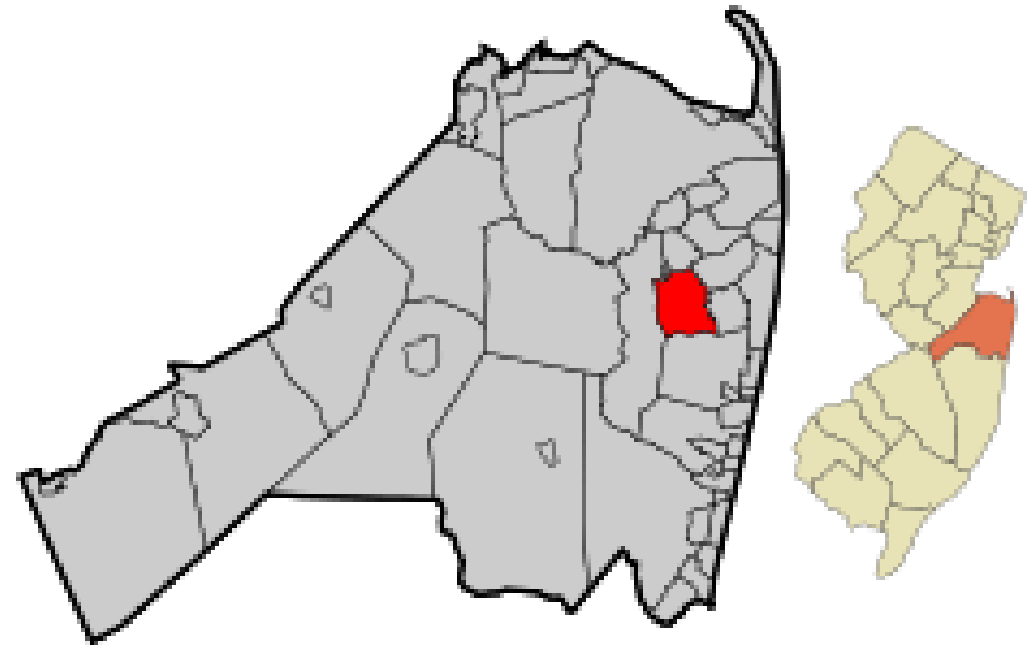
NJ Bike and Walk Summit 2025

**Candace Faust
Councilwoman
Borough of Eatontown**



The Beginning of Eatontown's Complete Streets Journey

- 2017 Master Plan Re-Examination
- November 2017 League of Municipalities
- 2018 creation of the Complete Streets Advisory Committee by Resolution
- 2019 Complete and Green Streets Ordinance passed
- 2020 amended Ordinance to increase membership for advocates and priority communities
- 2024 amended so applicants returning to the Planning and Zoning Boards would have to fill out the checklist



1st Grant New Jersey Prevention Network

- **NJ Bike and Walk Coalition Summit 2018**
- **NJ Prevention Network “Get Active” \$3,000 grant**
- **Wampum Veteran’s Memorial Park**
- **Historic Site – site of Eaton Mill, original site of jailhouse and an abandoned railway**
- **Fully stocked lake, veteran’s monuments, Captain J. M. Gurbisz memorial gazebo, Mingo Jack memorial stone**



Before the
Walkway





Finished Stone Dust Pathway



Before and After: Pedestrian Bridge

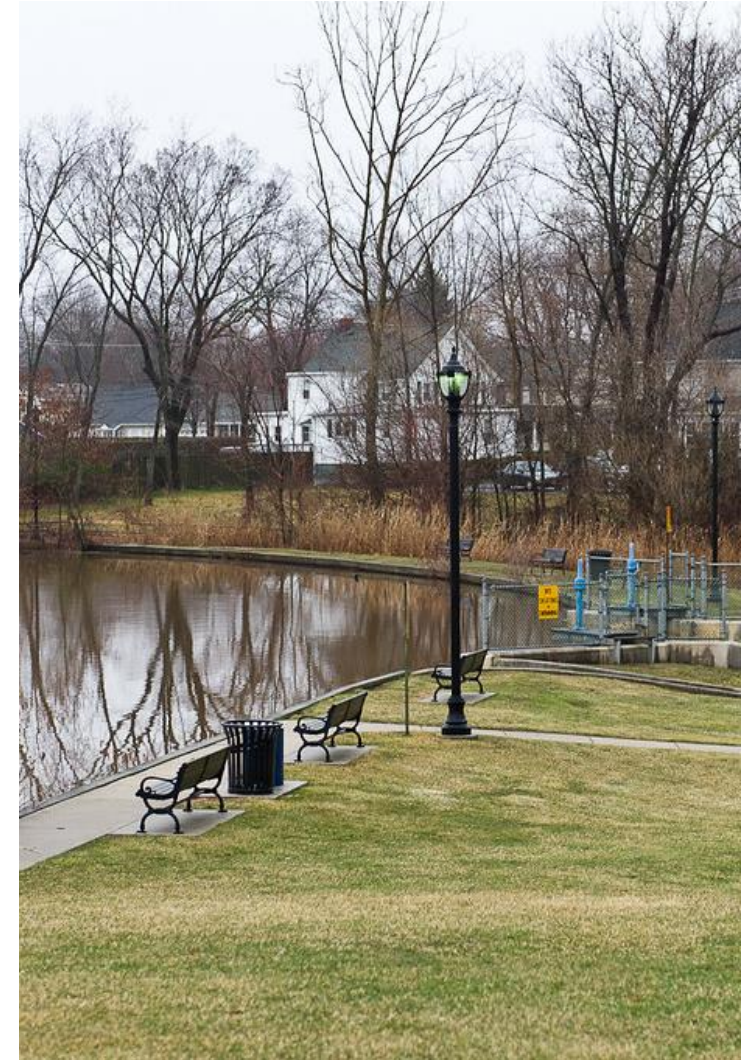


2nd Grant Sustainable Jersey

Complete Streets Technical Assistance Grant (up to \$10,000) – Sustainable Jersey, the Voorhees Transportation Center at Rutgers University, the North Jersey Transportation Authority and Together New Jersey

Connectivity to 3 Borough parks – Wampum Veteran's Memorial Park, Wolcott Park and the F. Bliss Price Arboretum and Wildlife Sanctuary

In addition to connecting the three parks, this route passes near the Borough Hall, Eatontown Library, the Community Center and the Historical Museum





Greenway Plan

Borough of Eatontown, Monmouth County, NJ

2019



RUTGERS
Edward J. Bloustein School
of Planning and Public Policy



EATONTOWN GREENWAY LOGO CONTEST

The Eatontown Greenway Project's goal is to create safe pedestrian connectivity throughout the Borough of Eatontown. We are currently working on creating a logo to be displayed on trail markers and project literature.

Here is a link to the Complete Streets Committee's information page:

<https://github.com/sfratini33/eatontown-complete-streets/wiki>

The contest opens Monday February 8, 2021, 9:00AM. The contest ends February 19, 2021 4:00PM

Entries must be submitted in JPEG format.

Once submitted the artwork becomes the property of the Borough of Eatontown.

Entries must be emailed to rec@eatontownnj.com or dropped off to Borough Hall, 47 Broad Street Eatontown NJ 07724, front lobby vestibule drop box by the deadline.

The logo committee requests your artwork entry colors are limited to two colors, navy blue and green.

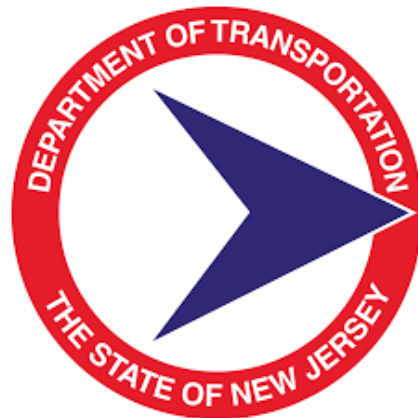
1st, 2nd, & 3rd Place Winners!

Win a P. C. Richards Gift Card!

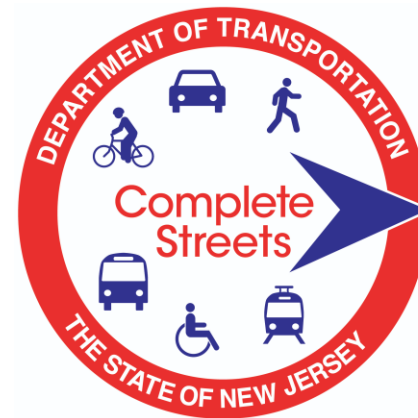
1st Place - \$50, 2nd Place - \$25, 3rd Place - \$25

EATONTOWN RECREATION 47 BROAD ST EATONTOWN NJ 07724 732-389-7607





Bike and Pedestrian Planning Assistance Program



Application



Evaluation Process/Selection Criteria



Eligible Planning Activities

Sidewalk and Bus Stop Inventory





Bike Rodeo

Eatontown Community Day



**EATONTOWN
COMMUNITY
DAY**

SATURDAY 21 SEPTEMBER	FREE ENTRY LIVE MUSIC FREE CHILDREN RIDES & ACTIVITIES STARTS AT 1 PM
------------------------------------	---

WOLCOT PARK
1-99 WILLOW AVE

Free Pumpkin Patch & Hay Rides
FOOD TRUCKS
BEER & WINE GARDEN
CRAFT VENDORS



CONCEPT DEVELOPMENT CHECKLIST				
Item To Be Addressed	Checklist Consideration	Yes	No	Required Description

Borough Planner Sign-Off <i>Statement of compliance</i>			Yes	No	YNO, please describe why (refer to Exemplars if Cause)
The plan or roadway improvement accommodates bicyclists, pedestrians, transit users of all ages and abilities, and addresses the related public health, safety, environmental, and economic goals as set forth in the Borough of Eatontown's Complete Streets Policy.					

MAINTENANCE

- Eatontown was the 1st municipality in NJ to adopt this new policy by ordinance!

PRELIMINARY ENGINEERING CHECKLIST					
Item To Be Addressed	Checklist Consideration	Yes	No	N/A	Required Description

Item To Be Addressed	Checklist Consideration	Yes	No	N/A	Required Description
ASSISTANCE FOR THE STUDENT	Does the student have sufficient resources to complete the course successfully?				

Borough Planner Sign-Off _____

goals as set forth in the Borough of Eden's Comprehensive Economic Policy

[illegible]

ROAD TRAVELER'S CLUB	During construction, will safe access be maintained for all users, including pedestrians, bicycles, transit users, and delivery vehicles?	
----------------------	---	--

STREET CLEANING	Does the street cleaning include the shoulder or roadway to the curb?				
	Are the shoulders cleaned on a regular basis?				

	residential requirements to clean areas from the community right of way?				
--	--	--	--	--	--

	<p>Examples include (but are not limited to):</p> <ul style="list-style-type: none"> • Lane narrowing • Lane reconfiguration 			
--	--	--	--	--

	<ul style="list-style-type: none"> • <i>extended work extension, etc.</i> 				
STORMWATER	Does the maintenance plan include procedures to not				

	2014	2015
The Borough's railway maintenance and snow removal plan accommodates biopaths, meadows, and other measures to encourage biodiversity, as set both in the Borough of		

Best Complete Streets Policies 2023

Eatontown
13th in United States
1st in New Jersey



Smart Growth America
Improving lives by improving communities



National Complete
Streets Coalition



THANK YOU !

Candace Faust
Councilwoman
Borough of Eatontown
cfaust@eatontownnj.com



SafeRoutes



Academy

Saferoutesnj.org

